



Form 180 Blue

NOT USED

A. L. Bates Coal Co.

L-69

mine index 3717

| | | | | | | | | | | | |
|---|---|---|---|---|---|---|---|---|---|---|---|
| h | . | . | . | . | . | . | . | . | . | . | . |
| g | . | . | . | . | . | . | . | . | . | . | . |
| f | . | . | . | . | . | . | . | . | . | . | . |
| e | . | . | . | . | . | . | . | . | . | . | . |
| d | . | . | . | . | . | . | . | . | . | . | . |
| c | . | . | . | . | . | . | . | . | . | . | . |
| b | . | . | . | . | . | . | . | . | . | . | . |
| a | . | . | . | . | . | . | . | . | . | . | . |
| 8 | 7 | 6 | 5 | 4 | 3 | 2 | 1 | | | | |

Sec. 27 T2

| | | |
|---|----|----------------|
| L | 19 | N ₂ |
| R | 11 | W ₂ |

Index No.

Location and Elevation Data

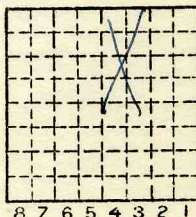
Location: Exact Approximate
(Approximate only if no trace of record of original exists)

Location by DMM film
Date..... Notebook No..... Page.....
Looseleaf ref.....
Map files No.....

Description of Location

Position in sec., 1/4 sec., 40 acres

.....feet from North line
.....feet from East line
.....feet from South line
.....feet from West line



NW 1/4
Sec. 27
T 19 N.
R E.
11 W.

Other description: L-69
Idle 1937

Farm.....
No.....
Company.....
A.L. BALES C.C.
No.....
County No.....

Elevation..... ft.

By.....

Method: Level, transit, alidade, hand level

Elevation of.....

Height of point above ground.....

Date..... Notebook..... P.....

Looseleaf ref.....

Map files No.....

Description of item: (drill hole, mine, etc.).....

County Vermilion Quadrangle 149 Index No. 1729 T2



Mine originally operated by: (1)

Date

1934

A. L. Bales C. C.

Original name or number:

Illinois Coal Report

p.

LATER OPERATORS

| Date | Operator | Name or No. |
|------|----------|-------------|
| 2 | | |
| 3 | | |
| 4 | | |
| 5 | | |
| 6 | | |
| 7 | | |
| 8 | | |
| 9 | | |
| 10 | | |
| 11 | | |
| 12 | | |
| 13 | | |
| 14 | | |

*Also owners

#See ownership sheet

Railroad, Wagon, Strip, Idle, Abandoned

IDENTIFICATION

1937

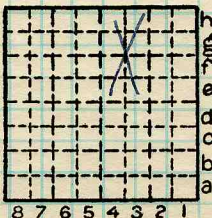
County No. _____

Coal No.

Coal Report No. L-69

Quad. 149

County Vermilion



Sec. 27

T. 19 N. 8

R. 11 W. 1

Index No.

1727 T2

COAL MINE OPERATOR



(Sheets) COAL PRODUCTION (Sheet)

| Period | | | | | | Tons | |
|--------|-----|------|-----|-----|------|------|-----|
| Mo. | Day | Year | Mo. | Day | Year | | |
| | | | | | 1934 | | 490 |
| | | | | | 1935 | | 355 |
| | | | | | 1936 | | 720 |

SUMMARIES

| No. | to | No. | | | | |
|-----|----|-----|--|--|--|--|
| | | | | | | |

Railroad, Wagon, Strip, Idle, Abandoned

IDENTIFICATION

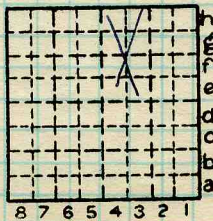
1937

County No. _____ Coal No. _____

Coal Report No. L-69

Quad. 149

County Vermilion



Sec. 27

T. 19 N.

R. 11 E.

Index No.

1929 12

