



Form 180 Blue

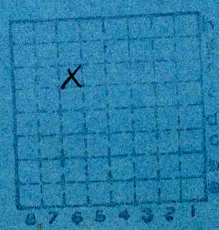
60-5-16-2006
DMM sheet sup
32-19n-11w

19N
11W

W.E. Williams Mine, #2

L-64

mine index 3856



Sec. 21 Fl
T. 19 N.
R. 12 W.
Index No.
1821 Fl



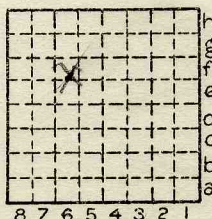
Location and Elevation Data

Location: Exact Approximate
 (Approximate only if no trace of record of original exists)
 Location by Dept Mines & Minerals 1938
 Date..... Notebook No..... Page.....
 Looseleaf ref.....
 Map files No.....

Description of Location

Position in sec., 1/4 sec., 40 acres

.....feet from North line
feet from East line
feet from South line
feet from West line



Other description: L-64

Farm.....

No.....

Company W.E. Williams

Mine

No. #2

County No.....

Elevation.....ft.

By.....

Method: Level, transit, alidade, hand level

Elevation of.....

Height of point above ground.....

Date..... Notebook..... P.....

Looseleaf ref.....

Map files No.....

Description of item: (drill hole, mine, etc.) Drift

6' of #7 coal 1937 LOCAL MINE

County 50.10 5' of #7 coal 1937 Quadrangle Danville Index No. 1822 F6

28294-5M-5-5-37

Vermilion



Mine originally operated by: (1) Woodard Coal Co.

Date

~~1936~~ L-64

1934

Original name or number:

Illinois Coal Report 1936 p.

LATER OPERATORS

Date Operator Name or No.

2 1937 W. E. Williams Mine #2

3

4

5

6

7

8

9

10

11

12

13

14

No Prod 1939

* Also owners

#See ownership sheet

Railroad, Wagon, Idle, Abandoned

Drift Mine

L-64

IDENTIFICATION

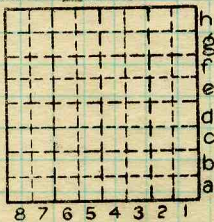
County No.

Coal No. 7

Quad. Danville

Part

County Vermilion



Sec. 21

19 N.

T. 9 E

R. 12 W.

Index No.

1822

COAL MINE OPERATOR

LOCAL MINE

One shell says 1111



(Sheets) COAL PRODUCTION (Sheet)

Period						Tons		
Mo.	Day	Year	Mo.	Day	Year			
					1934			800
					1935			166
					1936			800
					1937			330
					1938			204 305
						2605 2605		

SUMMARIES

No. to No.

Railroad, Wagon, Strip, Idle, Abandoned

IDENTIFICATION

County No. _____ Coal No. 1939
 Coal Report No. L-64 7
 Quad. Danville
 County Vermilion

Drift Mine Sec. 21

8	7	6	5	4	3	2	1
				X			

T. 19 N. S.
 R. 12 W. E.
 Index No. 1821 F6

