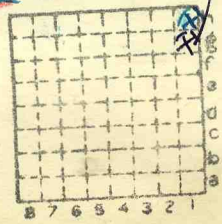


pouches.

ISGS Mine Index # 3319

Harrisburg CEMC #4 ~~2~~ 3320

623



Sec.	6	
T.	10	N. S.
R.	6	E. W.
Index No.		



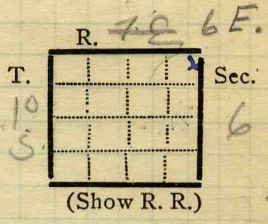
Town, *Leeds*  
Local Authority,

Level: Auth.,  
Method,

R. R., *C.C.C + St. L.*

Location: authority, *adjoins #2 on the NE old blank 26*

Surface alt., ft.  
Depth to coal, ft.  
Alt. top coal, ft.  
Thickness: Av. in.  
Max. in., Min. in.



Operator *Harrisburg Coal Mining Co* Mine Name or No. *#4.*

*19 26*

Successor to  
Date  
Succeeded by  
Date  
Succeeded by  
Date

*Worked out*

*3319*

PRODUCTION.

										U. S. No.	
<i>19 1927</i>		<i>22 264</i>				<i>#623</i>					

Geol. Notes?      Coop. No.      Coal secs?

Analyses No.

*27*

Examined by      Ref.

Coal bed name: Local **SHIPPING MINE**

Survey No.

County *Saline*

Index No.

**K.-ACTIVE SHIPPING OR LOCAL COAL MINE.**

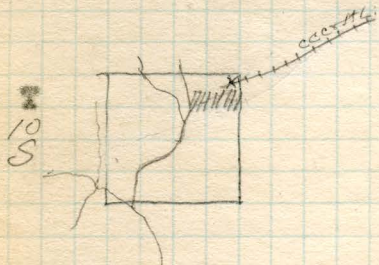
*1106*



Top 10 S R. 6 E Sec 6

Operator *Harrisburg Coal Mining Co*  
Address *Harrisburg -*  
Mine name or No.

R 6 E



R R  
Drainage  
Area worked

Stripping

Shovel( **Make size power source**)

*Bucyrus 225-B - 80' boom 60' stick. 6 yd dippers  
steam -*

**Plan(operations)**

*Long E-W cut - irregular trend, pt. N of W, spoil on South  
cut 30-50 feet*

**Preparation for loading(cleaning surface shooting)**

*shovel gang - then sweepers, leaving a smooth clean  
coal top.*

LOADING

Shovel (Make size power source)

1 1/2 yds digger loads from 35' cut  
Manion 36 - steam

Operation (horsebacks slips dirt bands)

none noted

Haulage (out of pit) loco

Cars (type capacity) 5 Ton, side gates

Loco (capacity cars per trip time per trip)

10-15 cars - 4-5 T each - 15 min round trip

Dumping (method equipment)

dump to hopper - to pan conveyed by  
reciprocating boom

Conveyor (type)

endless pan type

PREPARATION

Crushing (sizes equipment)

over reciprocating screens, 4 sizes - 2" screen

Cleaning (picking tables number men)

hand picked off booms

Screening (sizes capacity)

2" screening	30%
2x3 nut	20
3x6 egg	30
6" libby	20

SHIPPING

Car Loading(sizes loaded method equipment)

Trackage (diagram)

Market(RR carrier rates uses)

STORAGE

Equipment type capacity

ADDENDA

**OVERBURDEN**

Method of handling *stripped on E-W cut and piled to the south*

Drainage (pump equipment)  
*elec driven pumps at W end*

Behavior when wet *fresh cut stands well but spoil bank slumps*

Area of thick and thin *thins to about 1/2 from max of 9 feet to min of 6'*

Variation of coal with thickness

Special features

**COAL**

Thickness (max. min av. Q sheet)  
*108 72 84*

Attitude *essentially level, may have regional dips to N.*

Special features (slips horsebacks faults)

5  
GRAPHIC SECTION

1 div = 2'

20' yellow clay with thin soil cover

40' shale gray, gritty, rather irregular bedding  
basal foot or two contained about plant  
fossils (box collected by Collins for Nov)Prominent inclined jointing, trending  
ca. N 70 E dipping 70° - 90°  
this feature gives smooth faces 8' x 16' in  
size. Probably 20° variation in the trend  
of the joints.Floor

Character (refractory material used)

light gray floor clay, stigmantia impressions