

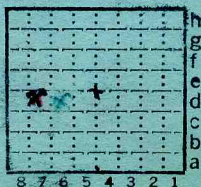
This mine shaft was sunk in 1943 but the mine never was in operation.

The Illinois Geological Survey sampled the coal for a chemical analysis. This analysis is filed under Black Diamond Coal Company, Young Mine.

Black Diamond Coal Company

Young Mine

No coal report number.



Sec. 29 D<sup>7</sup>0

T.	4	N.
R.	7	S.
		E.
		W.

Index No.

✓ Co.# 378

Sunset Hill Coal Co.

Notes by

Rolf W. Rold

(Dr. Cady)

Aug 3, 47

Black slab and clod are the principal top members neither causing a great trouble (Both sampled)

Except the black slab seems to have a bad drying characteristic being more like a true clay.

True fault striking NW SE has cut thru the property sometimes having a displacement of 10 feet. Nothing else noted this trip.

Near Edwardsville

29-4N-8W

Notes on Young Mine - NW cor. NE NW, SW, Sec. 29,  
T. 4N., R. 7W. Madison Co.

J. A. Siman & K. E. Clegg (Dec. 17, 1958)

Total depth from rail to base of coal 210'. Coal is 5' 8" to 6' 1" thick at shaft bottom. Gy. sh lined on top of coal up to approx 40'. Ironstone concretions in shale - very large in upper part. Three (3) to 4' of ls on top of shale.

Most of rest of shaft is concreted to ground level except through 3' to 4' of limestone a few feet above the base of the concrete.

Shaft reportedly sunk 15 years ago by Mr. Young. Mine known then as "Black Diamond". Shaft sunk thru coal. No entries driven in any direction. Shaft pumped out in 7 hours by Forsythe-Carterville Coal Co. in Nov. 1958. Entry started eastward to obtain a large (4 to 5 tons) sample for pilot scale coke test by Ill. Geol. Survey.

A face channel sample was taken, after entrance was started & squared up, from a position about 3' east of original face. Out by coal was discarded. Entry then driven about 5' farther eastward to provide the large sample.

A second face channel sample was then taken from the east face.

Channel sample No. 1 taken Dec. 12, 1958

Channel sample No. 2 taken Dec. 17, 1958

Approx. 9200 lbs of coal taken for large sample.



Young Mine  
 samples by JAS 12/12/58  
 NWc NE NW SW 29-4N-7W  
 MADISON Co.

Description of face channel C-10799

Inches

- 0-13 $\frac{1}{2}$ ,- Coal bright banded with occasional vitrain bands from  $\frac{1}{4}$   $\frac{1}{2}$  thick.
- 13 $\frac{1}{2}$ -13  $\frac{3}{4}$  - Shale, medium-light gray, carbonaceous, locally up to 1 $\frac{1}{2}$ " thick
- 13  $\frac{3}{4}$ -29 $\frac{1}{4}$  - Coal normally bright banded occasional vitrain bands  $\frac{1}{4}$ - $\frac{1}{2}$ " thick. Kaolinite on vertical facings. Facings become more numerous downward.
- 29 $\frac{1}{4}$ -29  $\frac{3}{4}$  - Coal, slightly bony and fusain
- 29  $\frac{3}{4}$ -33 - Coal normally bright banded with kaolinite on vertical facings, pyrite noted on some facings
- 33-53 $\frac{1}{4}$  - Coal, normally bright banded, kaolinite prominent on facings
- 53 $\frac{1}{4}$ -54 $\frac{1}{4}$  - Shale, gray, carbonaceous (blue band)
- 54 $\frac{1}{4}$  - 55 $\frac{1}{4}$  - Coal, normally bright banded with fine shaly streaks
- 55 $\frac{1}{4}$ -55  $\frac{3}{8}$  - Shale, gray, carbonaceous
- 55  $\frac{3}{8}$ -71" - Coal normally bright banded with kaolinite on vertical facings, occasional vitrain bands up to  $\frac{1}{2}$ " thick

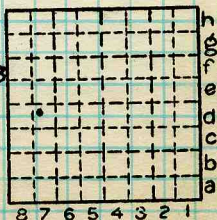
Top Blue band 19" above base

Blue band only excluded

By J. A. SIMON Date DEC 12, 1958

Quad Edwardsville Part

County MADISON



Sec. 01  
 T. N.  
 R. 8  
 Index No. 1 W.



# Young Mine (formerly Black Diamond)

NW cor. NE, NW, SW, Sec. 29, T. 4 N., R. 7 W  
Madison County

Face channel sample taken Dec. 17, 1958 by

C-10807

J. Simon  
K. Clegg

Sample from E. face, approximately 8' from bottom  
of shaft.

Log from top to bottom

Coal, NBB w/ vit bands up to  
 $\frac{1}{2}$ " thick. Kaolinite & Calcite prom on  
vert faces of Vitrain.

From	To
0"	5"

Coal, NBB w/ Kaolinite prom on  
vert faces.

5"	13"
----	-----

Sh, gy, carbncs ( $\frac{1}{8}$  to  $\frac{3}{8}$  inches thk)

13"	13 $\frac{1}{4}$ "
-----	--------------------

Coal, NBB, Kaolinite & pyr. prom on  
vert faces.

13 $\frac{1}{4}$ "	51"
--------------------	-----

Sh, gy, carbncs (Blue band) (excluded  
from sample)

51"	52"
-----	-----

Coal, NBB, prom fusain lenses

52"	53 $\frac{1}{2}$ "
-----	--------------------

Pyrite pits --

Coal NBB, w/ Kaolinite & calcite on  
vert faces.

53 $\frac{1}{2}$ "	68"
--------------------	-----

NW cor NE NW SW sec 29 4N 7W  
Madison Co.

Young

Troy Mine

Description of face channel  
Samp. Sampled by JAS 12/12/58

Inches

0 - 13 $\frac{1}{2}$

Coal B.B. w/ occ Vitrain  
bands from  $\frac{1}{4}$  -  $\frac{1}{2}$  thk.

13 $\frac{1}{2}$  - 13 $\frac{3}{4}$

Sh - med-lt gray, Carbonaceous, locally  
up to 1 $\frac{1}{2}$ " thk

13 $\frac{3}{4}$  - 29 $\frac{1}{4}$

Coal N.B.B. occ Vitrain bands  
 $\frac{1}{4}$  -  $\frac{1}{2}$ " thk. Kaolinite on Vert  
facings. Facings become more  
numerous downward.

29 $\frac{1}{4}$  - 29 $\frac{3}{4}$

Coal - slightly bony and fine

29 $\frac{3}{4}$  - 33

Coal N.B.B w/ Kaolinite on Vert  
facings, Pyrite noted on some  
facings

33 - 53 $\frac{1}{4}$

Coal - N.B.B, Kaolinite prominent  
on facings

53 $\frac{1}{4}$  - 54 $\frac{1}{4}$

Sh - gray, Carbonaceous (blue band)

54 $\frac{1}{4}$  - 55 $\frac{1}{4}$

Coal, N.B.B w/ fine shaly streaks

55 $\frac{1}{4}$  - 55 $\frac{3}{8}$

Sh - gray, Carbonaceous

55 $\frac{3}{8}$

71"

Coal N.B.B w/ Kaolinite on  
Vert facings, occ Vitrain  
bands up to  $\frac{1}{2}$ " thk

11  
Top Blue Band 19" above base

Blue band only excluded

53 $\frac{1}{4}$   
19  
72 $\frac{1}{4}$