



Mine originally operated by: (1)

Date

Original name or number:

Springfield Illinois Coal Report 1954 p. 88

LATER OPERATORS

Date	Operator	Name or No.
2 1882	Dickerson Coal Co.	
3 1913	Montour Coal Co.	No. 400
4 1919	Pittsburg Coal Co.	No. 400
5 1921	Illinois Coal Corp.	No. 1
6 1928	Lincoln Coal Corp.	

7

8

9

10

11

12

*Dept M & M - date of last record - 1927 Min Map file #12*

13

14

SHAFT

\*Also owners

#See ownership sheet

Railroad, Wagon, Strip, Idle, Abandoned

230'

IDENTIFICATION

6'

County No. \_\_\_\_\_

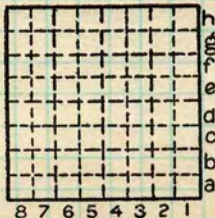
Coal No. \_\_\_\_\_

Coal Report No. \_\_\_\_\_

5

Quad.

County SANGAMON



Sec.

T.	N.
R.	S.
E.	W.

Index. No.

COAL MINE OPERATOR



Town, **Springfield** 580 Surface alt., 582 ft.  
 Local Authority, **Wm. Linsey** 204 Depth to coal, 244 ft.  
**M. Mgr** 376 Alt. top coal, 256338 ft.  
 Level: Auth., 72 Thickness: Av. 7269 in.  
 Max. 75 in., Min. 69 in.

Method, **Top Map**

R. R., **C & A. C P + St. L.**



Location: authority, **Folio 188**  
**Savage N.B. 12 p. 102**

Operator \_\_\_\_\_ Mine Name or No. \_\_\_\_\_

19 **Montour Coal Co.** No. 400

Successor to **Dickerson Coal Co** Empire

Date **1914**

Succeeded by **Pittsburgh Coal Co** No. 400

Date

✓ Succeeded by **Ill. Coal & Coke Corp.** Empire No. 1

Date **27th Jan. 1928, Chicago.**

**1170 Old Colony Bldg.**

PRODUCTION. **Rice Miller Rec.**

**Illinois**

U. S. No.

1917	214	513							
. 36	<b>daily Cap. 1500 Ton.</b>								✓
	<b>Succeeded by - Lincoln Coal Coal Corp.</b>								
			<b>Rice Miller - Pres.</b>			<b>page 7, Aug 7, 28 Black Diamond</b>			
1927	113	141							
1928									
									<b>1930 # 8</b>

Geol. Notes? **No** Coal sec.? **30**

Analyses No. **18448-9-50-1** **8**

**ABANDONED About 1928**

Examined by **Netzeband** Ref. **Loose Leaf**

Coal bed name: Local **SHIPPING MINE** Survey No. **5**  
 County **Sangamon** Index No. **0914 a 8**

✓ **K. - ACTIVE SHIPPING OR LOCAL COAL MINE.** **0914**

Location and Elevation Data

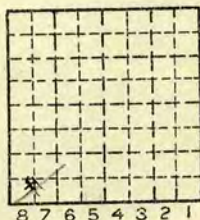
Location: Exact Approximate  
(Approximate only if no trace of record of original exists)

Location by W.B. Roe  
Date 4-23-31 Notebook No. 607 Page 9 #67  
Looseleaf ref.  
Map files No. 12-23-13d

Description of Location

Position in sec., 1/4 sec., 40 acres

..... feet from North line  
..... feet from East line  
500 feet from South line  
600 feet from West line



Sec. 14  
T 16 N.  
R 5 W.

Other description: .....

Farm.....  
No.....  
Company Panther Creek Mines Inc  
(old Jones ~~2~~ Mine) R.B.R.  
Empire + Nol, No 400.  
No. 6  
County No. ~~15~~

Elevation 596.8 ft.

By W.B.R

Method: Level, transit, alidade, hand level

Alidade

Elevation of Rail

Height of point above ground.....

Date 4-23-31 Notebook 607 P. 9 #67  
Looseleaf ref.....

Map files No.....

Description of item: (drill hole, mine, etc.) Abd shipping Mine 235 R-R  
coal about 5'6"

County Sangamon Quadrangle Spld 158 Index No. 0914 A8



Mine originally operated by: (1)

Dickerson Coal Co. Springfield.

#8

Date ~~1910~~ 1882

Original name or number: Empire.

Illinois Coal Report

p.

LATER OPERATORS

Date	Operator	Name or No.
2 1914	Montour Coal Co.	400
3 1919	Pittsburg C Co	400
4 1921	Ill. Coal Corp.	1
5 1928	Lincoln Coal Corp.	1
<del>6 1930</del>	<del>Panther Creek Mines Inc</del>	<del>6</del>

O.K.



14 ASSIGNED about 1928

Plat sheet #1

\* Also owners # See ownership sheet

Railroad, Wagon, Idle, Abandoned

SHIPPING MINE

IDENTIFICATION

County No. DK

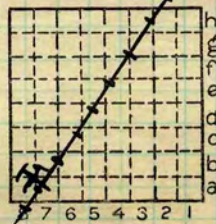
Coal No.

Quad.

Part

County

Sangamon.

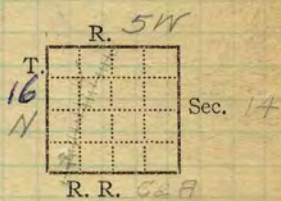


Sec. 14  
 T. 16 N.  
 R. 5 E.  
 Index No.

COAL MINE OPERATOR

0914 AB

Mine Name or No., *Empire No. 1*  
In mile *5* from *Springfield*  
Operator, 191*1*, *Illinois Coal & Coke Corp*  
Operator, 191



Entrance, *shaft* Elev., *580* ft. (above, *sea level.*)  
(below, *376*)  
Depth to bottom coal, *204* ft. Alt. *376*

SURFACE DATA.

- A. Topography, *Flat* See
- B. Surficial materials. (1) Character, *Till*
- (2) Thickness, *No information*
- (3) Effect on mining and shaft-sinking, of former drainage lines, underground water strata, etc. *No information*

- C. Outcrops, (1) Character, See
- (2) Structure, See
- (3) Fossil horizons, See
- Collection No.,
- (4) Evidences of subsidence, See
- D. Note collection of mine maps, drill records and shaft logs.

See drill record sheet,

E. Notes on surrounding area,

See

---

Coal bed name: Local, Survey No. *5*   
 Collector, *Netzeband*  
 Mine, *Empire #1* Co. *Sangamon* Index No. *0914-11*  
 L.—SURFACE SHEET (Geol.)

F. Thickness of rock above bed worked, *No information*

(1) Important variations,

See

G. Note presence of strata having important effect on mining,

*Black shale roof requires timbering*

See

(1) Position, *Above coal*

(2) Character, *Black, fissil to massive, many concretions*

(3) Persistence, *Thruout mine*

(4) Other workable coal beds, *No information*

See

H. Cap rock, *Limestone*

(1) Thickness, *4"-18"*

(2) Height above coal, *2'-6'*

See *X1*

I. Immediate roof, *Black shale*

(1) Thickness, *2'-6'* (2) Contact with coal,

*clean & regular except where there are concretions to laminated*

(3) Horizontal variation, *Varies from fissil*

See *X1*

J. Draw slate. (1) Thickness, (2) Contacts

*Practically none*

(3) Persistence,

K. Coal bed: Max. *75* Min. *69* Av. *72* inches

(1) Benches, *None*

(a) Position,

(b) Persistence,

See

(2) Bedded impurities, kind, position in benches, persistence, ease of separation. *Charcoal lenses*

*& bands*

See

(3) Irregularities in continuity of bed (due to deposition, erosion, or movement, *Clay horsebacks*

See

(a) Effect on mining, *Expensive to mine thru*

See

SECTION				
Ft.	in.	Name	Color	Sym.
1	6	Limestone		
6	(Max)	Bl. sh.		
6		Coal		
5	±	Flourclay		
1 Div = 4'				

Collector, *Netzaband*

Coal: Survey No. *5*

Mine, *Empire #1* Co. *Sangamon*

Index No. *0914'11*

## K. (5) Physical character of coal in benches,

(a) Relative hardness, *Coal about average hardness for**Sangamon County*(b) Lustre, *Impure (1/2 - 2/3) bright & dull with very little gloss.*(c) Fracture, *Hackly*(d) Texture, *Laminated*

See

## (6) Impurities in coal, other than bedded,

(a) Kind, *Pyrite bands & lenses, calcite or gypsum fin.*(b) Position and persistence, *For most part in upper and**middle coal*(c) Rejected, *Lenses over 1/2"* Ease of separation, *Some sticks**to coal while other breaks free.*

See

## L. Floor: (1) Material,

*Floor clay**15. below*(2) Thickness, *5'**Max. or min. unknown*

(3) Variation,

(4) Note character, condition, tendency to heave, relation to undercutting commercial value.

*Hard, dark grey clay; heaves when**wet where mined too wide; shoot from solid; value unknown.*

See

(5) Clay sample No.

Location,

## M. Stratigraphy,

(1) Fossiliferous horizons underground,

*None observed.*

Collection No.

Location,

## N. Notes on effect of deep drilling in coal mine areas.

See

Collector, *Netzeband*Coal: Survey No. *5* Mine, *Empire #1* Co. *Sangamon*Index No. *0914.11*



I<sub>3</sub> The roof is mostly a massive black shale. This immediately overlies the coal with a fairly even contact. Some places the lower contact of the shale is full of limy & pyritic concretions many of which show septarian cracks. These concretions are from 6" to 3' in diameter, and ~~extend~~ project into the coal. It is sometimes hard to get the coal from between these projections. The lower 2" to 6" is sometimes dark gray.

I Above this is a compact gray Ls. 4" to 18" in thickness. This lies upon an uneven surface. Above this is, according to the miners, a gray shale, called "soopstone" by the miners. Thickness unknown to our informant.

Operator, *Tillinois Coal & Coke Corp.* Date *Sept 8, 1931*  
 Mine, *Empire #1* Sec. *14 T.16 N R. 5W*  
 Location in mine, *Room 24, 20<sup>th</sup> E off Main N.*

GRAPHIC SECTION		DESCRIPTION OF SECTION (AT POINT SAMPLED)	
In.	No.	No.	(Note character and thickness of roof) Inches
			<i>Black shale</i>
		<i>1</i>	<i>Coal 7</i>
		<i>2</i>	<i>Pyrite &amp; charcoal lens 1/2</i>
		<i>3</i>	<i>Coal 1 1/4</i>
		<i>4</i>	<i>Pyrite lens 1/4</i>
		<i>5</i>	<i>Coal 1 3/4</i>
		<i>6</i>	<i>Pyrite lens 1/8</i>
		<i>7</i>	<i>Coal 6 3/4</i>
		<i>8</i>	<i>Pyrite lens 1/8</i>
		<i>9</i>	<i>Coal 20 1/2</i>
		<i>10</i>	<i>Charcoal lens 1/4</i>
		<i>11</i>	<i>Coal 14 3/4</i>
			<i>Tape 73 1/4 "</i>
			(Note character and thickness of floor)
			Total thickness of coal. <i>74</i>
		Condition, <i>Damp</i>	Time, <i>4</i> hr. <i>42</i> min. <i>1430</i>
		Wt. Gross, <i>34</i> lbs.	Net, lbs. <i>10 1/8</i> <i>442</i>
		What Nos. shipped by Co.?	
		Excluded from sample: No. <i>2</i>	
		Sample represents <i>73 1/2</i> in.	tons.
		Impurities? How do they occur?	

(1 division = 3 in.)

Sample No. *F-21-43* Can No. *02521* Lab. No. *81448*  
 Collector, *Thurston* Coal: Survey No.   
 Mine, *Empire #1* Co. *Sangamon* Index No. *0914.11*

Operator, *Illinois Coal & Coke Corp* Date *Sept. 8, 1931*  
 Mine, *Empire #1* Sec. *14* T. *16N* R. *5W*  
 Location in mine, *Room 5A, 13th N off 15th W*

GRAPHIC SECTION		DESCRIPTION OF SECTION (AT POINT SAMPLED)	
In.	No.	No. (Note character and thickness of roof)	Inches
		<i>Black shale with concretions</i>	
		<i>1 Coal</i>	<i>5 1/2</i>
		<i>2 Charcoal band</i>	<i>1/8</i>
		<i>3 Coal</i>	<i>5 1/4</i>
		<i>4 Charcoal lens</i>	<i>1/8</i>
		<i>5 Coal</i>	<i>19 3/4</i>
		<i>6 Pyrite band</i>	<i>1/16</i>
		<i>7 Coal</i>	<i>1 5/16</i>
		<i>8 Pyrite band</i>	<i>1/16</i>
		<i>9 Coal</i>	<i>8 1/2</i>
		<i>10 Charcoal lens</i>	<i>1/8</i>
		<i>11 Coal</i>	<i>19 1/2</i>
		<i>Tap</i>	<i>7 1/8</i>
(Note character and thickness of floor)			
Total thickness of coal.			<i>71 7/8</i>
Condition, <i>Dry</i>		Time, <i>3</i> hr. <i>17</i> min.	<i>132</i>
Wt. Gross, <i>25</i> lbs.		Net, lbs.	<i>11 25</i> <i>77</i>
What Nos. shipped by Co.?		<i>All</i>	
Excluded from sample: No.		<i>None</i>	
Sample represents		<i>71 7/8</i> in.	tons.
Impurities? How do they occur?		<i>Pyrite f.f., calcite</i>	

(1 division = 3 in.) *or gypsum f.f.*

Sample No. *T-21-44* Can No. *05741* Lab. No. *81449*  
 Collector, *Thorston* Coal: Survey No. *5*   
 Mine, *Empire #1* Co. *Sangamon* Index No. *091A-11*

Operator, *T. Hinds Coal & Coke Corp.* Date *Sept. 8, 1921*  
 Mine, *Empire #1* Sec. *12 T. R.*  
 Location in mine, *Room 894<sup>th</sup> W. off 6<sup>th</sup> S. 6<sup>th</sup> 11<sup>th</sup> W. off 11<sup>th</sup>*

GRAPHIC SECTION		DESCRIPTION OF SECTION (AT POINT SAMPLED)	
In.	No.	No. (Note character and thickness of roof)	Inches
		Black shale	
		1 Coal	3
		2 Charcoal lens	1/2
		3 Coal	10 1/4
		4 Black jack band	1/4
		5 Coal	16 1/2
		6 Charcoal lens	1/4
		7 Coal	7 3/4
		8 Pyrite lens	1/8
		9 Coal	9 1/2
		10 Pyrite band	1/16
		11 Coal	8
		12 Pyrite lens	1/16
		13 Coal	7 3/4
		14 Pyrite lens	1/4
		15 Coal	8
		Tape 7 1/2	
(Note character and thickness of floor)			
Total thickness of coal.			72
Condition, <i>Dry</i>		Time, <i>3</i> hr. <i>18</i> min.	<i>1535</i>
Wt. Gross, <i>27 1/2</i> lbs.		Net, lbs.	<i>12125</i> <i>312</i>
What Nos. shipped by Co.?		<i>All</i>	
Excluded from sample: No.		<i>None</i>	
Sample represents		<i>72</i> in.	tons.
Impurities? How do they occur?			

(1 division = 3 in.)

Sample No. *F-71-45* Can No. *2245* Lab. No. *81450*  
 Collector, *Thurston* Coal: Survey No.   
 Mine, *Empire #1* Co. *Sangamon* Index No. *0914-11*