

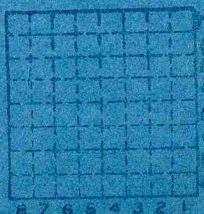


Form 180 Blue

Miles Coal Co.

L-184

Mine Index 2290



Sec 21 G3

T. 19 N

R. E.

12 W

Index No.

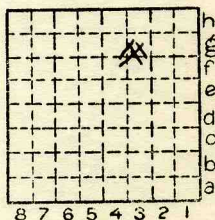
Location and Elevation Data

Location: Exact Approximate
(Approximate only if no trace of record of original exists)
Location by DMM film 1938
Date Notebook No. Page
Looseleaf ref.
Map files No.

Description of Location

Position in sec., 1/4 sec., 40 acres

feet from North line
feet from East line
feet from South line
feet from West line



Sec. 21
T 19 N.
R 12 W.

Other description: L-184

Farm No.
Company MILES CARL CO
No.
County No.

ADD - 1939

OPENED Nov. 22, 1938

Elevation ft.

By

Method: Level, transit, alidade, hand level

Elevation of

Height of point above ground

Date Notebook P.

Looseleaf ref.

Map files No.

Description of item: (drill hole, mine, etc.) Strip mine

6'0" - #2 coal (DMM film 1938)

County Vermilion Quadrangle 149 Index No. 182/G3









Mine originally operated by: (1) **Miles coal co.**

Date **1938**

Original name or number:  
 Illinois Coal Report \_\_\_\_\_ p.

LATER OPERATORS

Date	Operator	Name or No.
2		
3		
4		
5		
6		
7		
8		
9		
10		
11		
12		
13		
14		

*No. 1939 Part*

\*Also owners

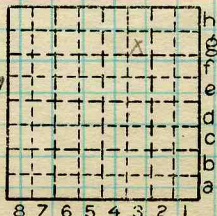
#See ownership sheet

Railroad, Wagon, Strip, Idle, Abandoned **Strip**

IDENTIFICATION

County No. \_\_\_\_\_  
 Coal Report No. **L-184**  
 Quad. **Danville 149**  
 County **Vermilion**

**1939**  
 Coal No. **7**



Sec. **21**

T. **19** N.  
 R. **12** W.  
 Index No. **1821**

COAL MINE OPERATOR