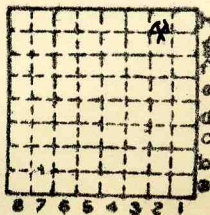




Form 180

Records of two drill holes, presumably at location of hoisting and air shafts as filed in technical records. - MAT 11/13/59

U.S. FUEL Co.
MIDDLE FORK #1
Co. No. 260
Mine Index #139



Sec. 21
T. 6 S.
R. 3 E.
Index No.



Mine originally operated by: (1)

Date

1916

Middle Fork Mining Co.
Benton

Original name or number:

Illinois Coal Report

1954 p. 75

LATER OPERATORS

Date

Operator

Name or No.

2 (First coal hoisted Feb. 1916)

3 1917 U.S. Fuel Co.

Middle Fork
#1

4

5

6

7

8

9

10

11

12

13

14

* Also owners

See ownership sheet

Railroad, Wagon, Idle, Abandoned Shaft 600'

SHIPPING MINE

IDENTIFICATION

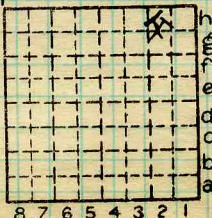
County No. 260

Coal No. 6

Quad. 263

Part

County FRANKLIN



Sec. 21

T. 6 N. S.

R. 3 E. W.

Index No.

COAL MINE OPERATOR

0721-2h



(Sheets) COAL PRODUCTION (Sheet)

Period				Tons		
Mo.	Day	Year	Mo.	Day	Year	
(Dept. of Mines)	Idle	1925-26				
	"	1927				
	"	1928				
	Idle	1931				
	"	1932				
	"	1933				
	"	1934				

SUMMARIES					
No.	to	No.			
1916	-	1930	4	067	931

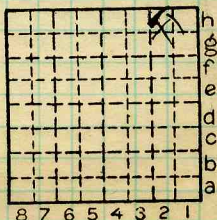
Railroad, Wagon, Idle, Abandoned
IDENTIFICATION

SHIPPING MINE

County No. 260 Coal No. 6

Quad. 263 Part

County Franklin



Sec. 21

T. 6 N. S.
R. 3 E. W.

Index No.

COAL MINE—PRODUCTION

0721.2h



LOCATION AND ELEVATION

Location: side C. & E. I. R. R.
 side C. B. & Q.; I. C. R. R.
 side Highway No.

on top. map Location sheet

Elevation: Method, 1. Est. () _____ ft.
 2. Inst. (kind PT) 415.1 ft.

By WBR. Data sheet

DEPTH

Authority Sam Howardton To coal _____ ft.
 Authority Rail to rail _____ ft.
 Top of coal above rail. (Est. Rule) _____ ft.
 To coal 602 ft.

ALTITUDE OF TOP OF COAL

By estimated data _____
 By instrumental data -187 ft.

Thickness
 Max. 138 in. Min. 60 in. Aver. 72 in.

GEOLOGICAL DATA

Mine notes, date Yes _____

Coop No. 139 Pyr. inv. Coal Ash inv.

CHEMICAL DATA

Analyses Face	U. I.	B. M.	Others
Car	<u>12652-3-4-92-9</u> <u>12700</u>	B. M.	Others
Org. Sulf	U. I.	B. M.	Others
Ash fusion	U. I.	B. M.	Others
Ash anal.	U. I.	B. M.	Others
	U. I.	B. M.	Others

Classification

Misc. tests: Coking. Cleaning Boiler

Published descriptions:—

Railroad, Wagon, Idle, Abandoned

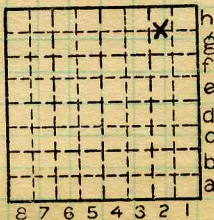
SHIPPING MINE IDENTIFICATION

County No. 260

Coal No. 6

Quad. W. Frankfort
 County Franklin

Part 



Sec. 21

T. 6 S.

R. 3 E.

Index No. 0721-2h

COAL MINE LOCATION AND DATA



Location and Elevation Data

Location: Exact Approximate

(Approximate only if no trace or record of original exists)

Location by W.B. Roe

Date 7-27-1932 Notebook No. 614 Page 3 (2017)

Looseleaf ref. _____

Map files No. 5-28-28

Description of location

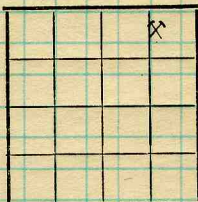
Position in sec., 1/4 sec., 40 acres

575 feet from North line

1140 feet from East line

_____ feet from South line

_____ feet from West line



Sec. 21
 T. _____ S. _____
 R. _____ E. _____

Farm _____

No. _____

Company _____

U.S. Fuel Company

No. 1 Mine

County No. 71

Other description: _____

MN 1921
Sh. Ct 71 341.75
77 338.75 to N. 6 = 519.99

#6 596.33 184.24
623.08 180.99

Elevation ~~412.9~~ 412.9 ft.

By W.B. Roe

Method: Level, transit, alidade, hand level

Plane table & Alidade

Elevation of Curb

Height of point above ground _____

Date 7-27-1932 Notebook 614 P. 3 (2017)

Looseleaf ref. _____

Map files No. 5-28-28

Description of item: (drill hole, mine, etc.) Air shaft - shipping mine

SHIPPING MINE

County Franklin
 (45576-1M-10-30)

Quadrangle W. Frankfort
NEW

Index No. 0721.2h



F. Thickness of rock above bed worked, *57 1/2'*
 (1) Important variations, *No information*. See

G. Note presence of strata having important effect on mining, *Light grey shale (Whit atop) Bad roof* See *X 2*
 (1) Position, *Above coal*
 (2) Character, *Soft, light grey shale*
 (3) Persistence, *Thruout N. workings*
 (4) Other workable coal beds, See

H. Cap rock, *Limestone*
 (1) Thickness, *No information*
 (2) Height above coal, *6"-6'* See

I. Immediate roof, *"Slate"*
 (1) Thickness, *2'-6'+* (2) Contact with coal, *Clean + regular*
 (3) Horizontal variation, *The roof varies in character & thickness* See *X 2*

J. Draw slate. (1) Thickness, (2) Contacts
The black slate draws in some places in the mine

K. Coal bed: Max. *138* Min. *60* Av. *72* inches

(1) Benches, *Two*
 (a) Position, *Above & below B.B.* 565 6 Unknown
 (b) Persistence, *Thruout mine.* See

(2) Bedded impurities, kind, position in benches, persistence, ease of separation. *Charcoal, clay Blue band breaks away easily & cleanly.*
 ? Limestone
 6 (max) Black sh. See

(3) Irregularities in continuity of bed (due to deposition, erosion, or movement), *Rolls & slips.* 6 Coal 5 Floor clay See *X 1*
 (a) Effect on mining, *Effect mining but little* See *A' = 1 Dir.*

SECTION				
Ft.	In.	Name	Dir.	Sym.
30		Till		
565	6	Unknown		
?		Limestone		
6	(max)	Black sh.		
6		Coal		
5		Floor clay		

Collector, *Natzband*
 Mine, *Middlefork* Co. *Franklin*
 M.—UNDERGROUND SHEET (Geol.)

Coal: Survey No. *6*
 Index No. *0721-989*



K. (5) Physical character of coal in benches,

- (a) Relative hardness, *Average hardness above same as coal to the west.*
- (b) Lustre, *Dull with layers ($\frac{1}{16}$ " - $\frac{1}{8}$ ") of glance.*
- (c) Fracture, *Top subconchoidal, rest blocky.*
- (d) Texture, *Laminated* See
- (6) Impurities in coal, other than bedded,
- (a) Kind, *Pyrite lenses & vein fillings; also calcite veinlets*
- (b) Position and persistence, *Pyrite lens in bottom just above floor. Small lenses & vein fillings in top coal.*
- (c) Rejected, *Lens in bottom* Ease of separation, *Separates easily.* See

L. Floor: (1) Material, *Clay*(2) Thickness, *2" Brittle, black, carb. shale. 4-5' Green-gray sh.*(3) Variation, *Soft gray sh. in Main N. Carb sh. in NE. Hard gray sh & carb. sh. in S.E.*(4) Note character, condition, tendency to heave, relation to undercutting commercial value. *2" Brittle, black, carb. shale containing plant fragments, Cordaites. Below this a green-gray shale full of slickensides. Heaves when wet. Limestone below coal. Use floor clay to cut upon. Value unknown.*

See X2

(5) Clay sample No.

Location,

M. Stratigraphy,

(1) Fossiliferous horizons underground, *Carb. floor clay - plant fragments Carb. shale in roof - pyrite replacements of brachiopods. Limestone cap rock - brachiopods, crinoid stems, cephalopod, or*

Collection No.

Location,

| pelecypod.

N. Notes on effect of deep drilling in coal mine areas.

See

Collector, *Natzaband*Coal: Survey No. *6* Mine, *Middlefor K.* Co. *Franklin*Index No. *0721.889*



Operator, *U.S. Fuel Co.*

Date *June 8, 1921*

Mine, *Middlefork*

Sec. *21* T. *6S* R. *3E.*

Located, *2 1/2* miles from *Benton*

Location in mine, *Face of 9th N. off 1st W. of Main N.*

GRAPHIC SECTION		DESCRIPTION OF SECTION (AT POINT SAMPLED)		
In.	No.	No.	(Note character and thickness of roof)	Inches
			<i>Shale Roof</i>	
	<i>1</i>		<i>Coal</i>	<i>10</i>
	<i>2</i>		<i>Shale</i>	<i>3/4</i>
	<i>3</i>		<i>Coal, calcite stringers.</i>	<i>16 1/4</i>
	<i>4</i>		<i>Charcoal</i>	<i>1/4</i>
	<i>5</i>		<i>Coal</i>	<i>2 1/4</i>
	<i>6</i>		<i>Charcoal</i>	<i>1/4</i>
	<i>7</i>		<i>Coal</i>	<i>7 1/4</i>
	<i>8</i>		<i>Pyrite + Charcoal</i>	<i>1/4</i>
	<i>9</i>		<i>Coal, pyrite lenses</i>	<i>33</i>
	<i>10</i>		<i>shingle BB</i>	<i>1</i>
	<i>11</i>		<i>Coal</i>	<i>10</i>
<i>Tape 79"</i>				
(Note character and thickness of floor)				
Total thickness of coal.				
Condition, <i>As mined</i>		Time,	hr.	min.
Wt. Gross, <i>25</i> lbs.		Net,	lbs.	
What Nos. shipped by Co.?				
Excluded from sample: No. <i>2, 10</i>				
Sample represents <i>in.</i> <i>10</i> tons.				
Impurities? How do they occur?				

Sample No. *3* Can No. *11F2F26* Lab. No. *12700*

Collector, *Wilson* Coal: Survey No. *6*

Mine, *Middlefork* Co. *Franklin* Index No. *0721.889*



Symbol	Description	Inches
	Coal top.	
1	Coal	5 $\frac{1}{2}$
2	Charcoal	$\frac{1}{4}$
3	Coal	9
4	Charcoal	$\frac{1}{4}$
5	Coal	9 $\frac{1}{2}$
6	Charcoal	$\frac{1}{4}$
7	Coal	4
8	Pyrite & Charcoal	$\frac{1}{2}$
9	Coal	6 $\frac{1}{2}$
10	Charcoal	$\frac{1}{4}$
11	Coal	8
12	Charcoal	$\frac{1}{2}$
13	Coal	20
14	Clay + charcoal	$\frac{1}{2}$
15	Coal	7
16	Blueband (sh)	$\frac{1}{2}$
17	Coal	14
Tape 83"		
Face 3rd J.W. entry		

(Scale: 1 division = 3 inches).

Sample No.

Can No.

Lab. No.

Collector, *Netzaband*Coal: Survey No. *6*Mine, *Middlefork*Co. *Franklin*Index No. *0721.989*

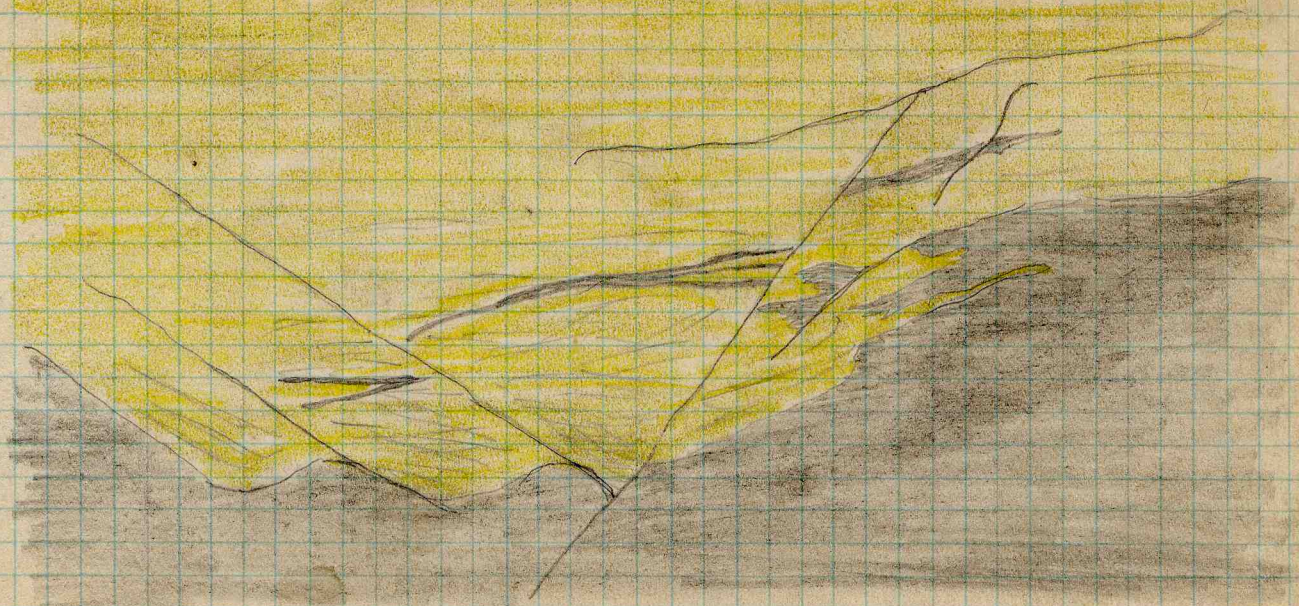
Q.—COAL SECTION SHEET.

INDEX

(36713-500-7-20)



259693



20' S from face of Main back North

Collector

X-1

Netzeband

EXTRA NO. 1

Index No.

0721.989

County

Franklin



259693

INDEX

(36713-500-7-20)

L3

In the Main N. the floor is a soft gray sh.

In the N.E. the upper 2" is a hard, brittle, black carb. shale with many plant fragments, especially cordaites. Below this is a gray shale, full of slickensides. This shale is somewhat sandy.

In the S.E. the floor varies within a few feet from a hard, sandy, gray shale to a hard, black carb shale. The carb. sh. is fissil but the gray sh. is massive.

G

In the North workings there is a light gray, soft shale which makes a very bad roof. In most places several feet of coal is left for a roof.

In the South workings there is a limestone roof in many places. There is a limestone roof over the "bottom."

Main S. — the roof is a black carb, somewhat fissil shale. It contains fragments of cordaites & lepododendrons but no ferns.

In general, the roof changes very rapidly from one shale to another and from shale to limestone. The black shale is fissil and usually draws with the coal. The gray sandy shale stays up for a while and then falls upon being air slacked. The coal & limestone are the only types of roof that will stand without heavy timbering.

It is reported by Mr. Cosgroves, Mine Manager, that the roof in the East West entries will stand while the roof in the North-South entries will fall in a very short time. He has no explanation for the phenomenon.

Collector

Netzeband

Index No.

0721.98

X-2

EXTRA NO. 2

County

Franklin

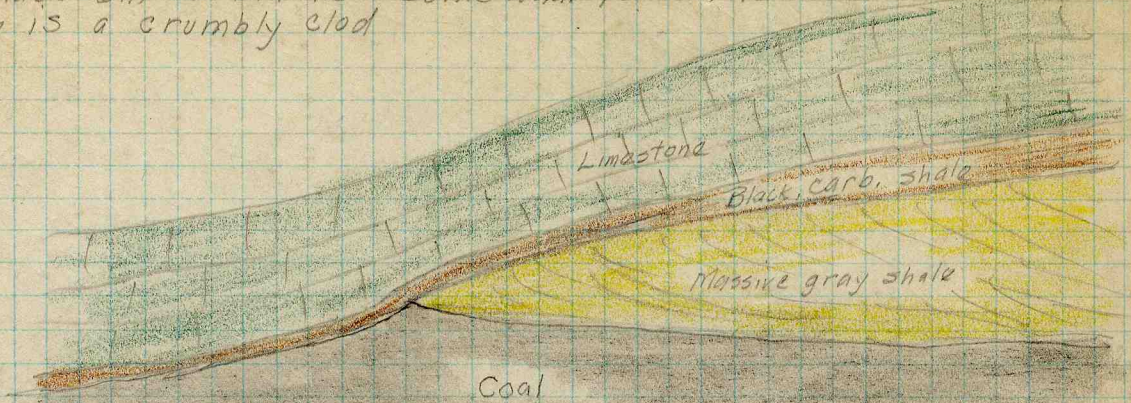


259693

(36713-500-7-20)

INDEX

The gray sh. is sandy with layers of sandstone thruout. It is much fractured, especially where it pinches out. The black sh. is brittle + some what fissil. The lower portion is a crumbly clod



1st SW. entry.

Scale 2dir = 1'

Collector *Netzeband*
 X-9
 Index No. **072198**
 County **Franklin**
 EXTRA NO. 3



Operator, *U. S. Fuel Co.* Date *June 7, 1921*
 Mine, *Middlefork* Sec. *21* T. *6S* R. *3E*
 Located, *2* miles from *Bepton*
 Location in mine, *Face of Back N. Entry*

GRAPHIC SECTION		DESCRIPTION OF SECTION (AT POINT SAMPLED)		
In.	No.	No.	(Note character and thickness of roof)	Inches
			<i>Black Shale Roof,</i>	
	<i>1</i>		<i>Coal</i>	<i>3 1/2</i>
	<i>2</i>		<i>Charcoal</i>	<i>1/4</i>
	<i>3</i>		<i>Coal</i>	<i>8</i>
	<i>4</i>		<i>Shale</i>	<i>1/4</i>
	<i>5</i>		<i>Coal</i>	<i>3 1/2</i>
	<i>6</i>		<i>Shale</i>	<i>3 3/4</i>
	<i>7</i>		<i>Coal, pyrite stringers</i>	<i>25 1/2</i>
	<i>8</i>		<i>Charcoal, pyrite</i>	<i>1/4</i>
	<i>9</i>		<i>Coal</i>	<i>9</i>
	<i>10</i>		<i>Charcoal</i>	<i>1/4</i>
	<i>11</i>		<i>Coal</i>	<i>14</i>
	<i>12</i>		<i>BB (shale)</i>	<i>1</i>
	<i>13</i>		<i>Coal</i>	<i>8</i>
	<i>14</i>		<i>Shale</i>	<i>1/2</i>
	<i>15</i>		<i>Coal</i>	<i>10</i>
	<i>16</i>		<i>Pyrite between coals & fireclay 82" tape</i>	
			(Note character and thickness of floor)	
			Total thickness of coal.	
			Condition, <i>As mined</i>	Time, hr. min.
			Wt. Gross, <i>20</i> lbs.	Net, lbs.
			What Nos. shipped by Co.?	
			Excluded from sample: No.	<i>6, 12, 14</i>
			Sample represents	<i>in.</i> tons.
			Impurities? How do they occur?	

Sample No. *1* Can No. *W-21-21* Lab. No. *12682*
 Collector, *Wilson* Coal: Survey No. *6*
 Mine, *Middlefork* Co. *Franklin* Index No. *0721-889*
 R.—COAL SAMPLE SHEET.

Operator, *U.S. Fuel Co.*Date *June 7, 1921*Mine, *Middlefork*Sec. *21* T. *68* R. *3E*Located, *2* miles from *Bernton*Location in mine, *Face of 1st F.N.*

GRAPHIC SECTION		DESCRIPTION OF SECTION (AT POINT SAMPLED)		
In.	No.	No.	(Note character and thickness of roof)	Inches
			<i>Coal Roof app 24"</i>	
	<i>1</i>	<i>Coal</i>		<i>12</i>
	<i>2</i>	<i>Charcoal</i>		<i>1/4</i>
	<i>3</i>	<i>Coal</i>		<i>9</i>
	<i>4</i>	<i>Charcoal</i>		<i>1/2</i>
	<i>5</i>	<i>Coal</i>		<i>8</i>
	<i>6</i>	<i>Shale</i>		<i>1/2</i>
	<i>7</i>	<i>Coal</i>		<i>3 1/2</i>
	<i>8</i>	<i>Charcoal</i>		<i>1/4</i>
	<i>9</i>	<i>Coal</i>		<i>5</i>
	<i>10</i>	<i>B.B. shale</i>		<i>1</i>
	<i>11</i>	<i>Coal</i>		<i>6</i>
	<i>12</i>	<i>Charcoal</i>		<i>1/4</i>
	<i>13</i>	<i>Coal</i>		<i>21</i>
	<i>14</i>	<i>Charcoal</i>		<i>1/4</i>
	<i>15</i>	<i>Coal</i>		<i>8</i>
	<i>16</i>	<i>Coal</i>		<i>6</i>
	<i>1</i>		<i>79</i>	
			(Note character and thickness of floor)	
			Total thickness of coal.	
		Condition, <i>As mined</i>	Time, hr. min.	
		Wt. Gross, <i>25</i> lbs.	Net, lbs.	
		What Nos. shipped by Co.?		
		Excluded from sample: No. <i>6, 10</i>		
		Sample represents	in.	tons.
		Impurities? How do they occur?		

Sample No. *7*Can No. *10-25-22*Lab. No. *12683*Collector, *Wilson*Coal: Survey No. Mine, *Middlefork*Co. *Franklin*Index No. *0721-889*

R.—COAL SAMPLE SHEET.



Operator, *U.S. Fuel Co.* Date *June 7, 1921*
 Mine, *Middlefork* Sec. *21* T. *6S* R. *3E*
 Located, *2* miles from *Benton*
 Location in mine, *Face of 1st S.E.*

GRAPHIC SECTION		DESCRIPTION OF SECTION (AT POINT SAMPLED)		
In.	No.	No.	(Note character and thickness of roof)	Inches
			<i>Coal Roof app 24"</i>	
	<i>1</i>		<i>Coal, top containing calcite stringers.</i>	<i>5 1/2</i>
	<i>2</i>		<i>Coal</i>	<i>9 1/2</i>
	<i>3</i>		<i>BB shale</i>	<i>1</i>
	<i>4</i>		<i>Charcoal</i>	<i>1</i>
	<i>5</i>		<i>Coal</i>	<i>14</i>
	<i>6</i>		<i>Coal</i>	<i>3</i>
			<i>31" tape</i>	<i>3</i>
(Note character and thickness of floor)				
Total thickness of coal.				
Condition, <i>fls mined</i>		Time,	hr.	min.
Wt. Gross, <i>25</i> lbs.		Net,	lbs.	
What Nos. shipped by Co.?				
Excluded from sample: No. <i>3</i>				
Sample represents		in.		tons.
Impurities? How do they occur?				

Sample No. _____ Can No. *W-21-23* Lab. No. *12684*
 Collector, *Wilson* Coal: Survey No. *6*
 Mine, *Middlefork* Co. *Franklin* Index No. *0721-489*
 R.—COAL SAMPLE SHEET.



Operator, *U.S. Fuel Co.*
 Mine, *Middlefork*
 Located, *2 1/2* miles from *Benton*
 Location in mine, *Face of Main S.*

Date *June 8, 1921*
 Sec. *21* T. *6S* R. *3E*

GRAPHIC SECTION		DESCRIPTION OF SECTION (AT POINT SAMPLED)		
In.	No.	No.	(Note character and thickness of roof)	Inches
			<i>Carbonaceous Str. Roof</i>	
	<i>1</i>		<i>Coal</i>	<i>3</i>
	<i>2</i>		<i>Shale</i>	<i>1/8</i>
	<i>3</i>		<i>Coal</i>	<i>10</i>
	<i>4</i>		<i>Pyrite</i>	<i>1/8</i>
	<i>5</i>		<i>Coal</i>	<i>13</i>
	<i>6</i>		<i>Charcoal, pyrite stringers</i>	<i>1/4</i>
	<i>7</i>		<i>Coal</i>	<i>9</i>
	<i>8</i>		<i>Charcoal, calcite stringers</i>	<i>1/4</i>
	<i>9</i>		<i>Coal</i>	<i>7 1/2</i>
	<i>10</i>		<i>Pyrite</i>	<i>1/4</i>
	<i>11</i>		<i>Coal</i>	<i>12 1/2</i>
	<i>12</i>		<i>Charcoal</i>	<i>1/4</i>
	<i>13</i>		<i>Coal</i>	<i>2 1/2</i>
	<i>14</i>		<i>Shale</i>	<i>1/4</i>
	<i>15</i>		<i>Coal</i>	<i>5 1/2</i>
	<i>16</i>		<i>Pyrite lens</i>	<i>1/2</i>
	<i>18</i>		<i>Coal</i>	<i>7 1/2</i>
	<i>19</i>		<i>Charcoal</i>	<i>1/2</i>
	<i>20</i>		(Note character and thickness of floor) <i>Coal and pyrite</i>	<i>11 1/2</i>
	<i>21</i>		<i>BB</i> Total thickness of coal, <i>pyrite</i>	<i>1 1/2</i>
	<i>22</i>		<i>Coal</i>	<i>6</i>
			Condition, <i>As mined</i> Time, hr. min. <i>34"</i>	
			Wt. Gross, <i>30</i> lbs. Net, lbs.	
			What Nos. shipped by Co.?	
			Excluded from sample: No. <i>16, 21</i>	
			Sample represents in. tons.	
			Impurities? How do they occur?	

Sample No. *1* Can No. *W-21-24* Lab. No. *12698*

Collector, *Wilson* Coal: Survey No. *6*

Mine, *Middlefork* Co. *Franklin* Index No. *0721-189*



Operator, *U. S. Fuel Co.* Date *June 8, 1917*
 Mine, *Middlefork* Sec. *21* T. *65* R. *3E*
 Located, *2 1/2* miles from *Benton*
 Location in mine, *Face of 14th St. 1/4 mi. W. of Main S.*

GRAPHIC SECTION		DESCRIPTION OF SECTION (AT POINT SAMPLED)		
In.	No.	No.	(Note character and thickness of roof)	Inches
			<i>Shale</i>	
			<i>Coal Roof</i>	<i>36</i>
	<i>1</i>		<i>Coal calcite veins</i>	<i>28</i>
	<i>2</i>		<i>Charcoal</i>	<i>1/4-1/2</i>
	<i>3</i>		<i>Coal</i>	<i>28</i>
	<i>4</i>		<i>Coal, shaly</i>	<i>1/8</i>
	<i>5</i>		<i>Coal</i>	<i>9</i>
	<i>6</i>		<i>Shale B.B.</i>	<i>1 1/2</i>
	<i>7</i>		<i>Coal</i>	<i>12</i>
	<i>8</i>			
	<i>9</i>		<i>80" tape</i>	
(Note character and thickness of floor)				
Total thickness of coal.				
Condition, <i>As mined</i>		Time,	hr.	min.
Wt. Gross, <i>30</i> lbs.		Net,	lbs.	
What Nos. shipped by Co.?				
Excluded from sample: No. <i>6</i>				
Sample represents <i>6</i> in. tons.				
Impurities? How do they occur?				

Sample No. _____ Can No. *W-21-25* Lab. No. *12699*
 Collector, *Wilson* Coal: Survey No. *6*
 Mine, *Middlefork* Co. *Franklin* Index No. *0721-989*
 R.—COAL SAMPLE SHEET.