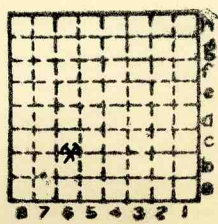


2407



Form 180

PEABODY CC #19
Co. No. 264
Mine index *51



Sec: 18
T. 7 N.
R. 3 E.
Index No.

✓



Mine originally operated by: (1)

Date 1904 Dering Coal Co.

Original name or number: #11
 Illinois Coal Report 1904 + 1954 p-75

LATER OPERATORS

Date	Operator	Name or No.
2 1908 ⁹	Brazil Block Co. // 11	#11 18
3 1911 ²	Dering Coal Co. // 11	#11 18
4 1915 ⁶	Producers Coal Co. 18	#18 19
5 1918 ⁷	ByProducts Coke Corp. 18	#18 19
6 1921 ³	Industrial Coal Co. 18	#18 19
7 1928	Peabody Coal Co. 18	#18 19
8		
9		
10	<p>dates corrected from Dmm CAM 4-19-88</p>	
11	<p>NUMBERS ACCORDING TO 1928 SUMMARY RDA</p>	
12		
13		
14		

* Also owners #See ownership sheet

Railroad, Wagon, Idle, Abandoned Shaft 510'

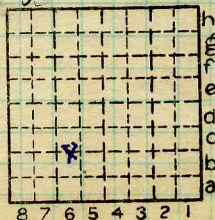
C.&E.I., C.B.&Q., I.C. 1936

IDENTIFICATION

County No. 264 Coal No. 6

Quad. W. Frankfort Part

County Franklin



Sec. 18

T. 7 S.

R. 3 E.

Index No.

1018 b6

COAL MINE OPERATOR



#18

(Sheets) COAL PRODUCTION (Sheet)

NO.	Period						Tons	
	Mo.	Day	Year	Mo.	Day	Year		
	1	1	1931	12	31	1931	392	193
						1932	420	804
						1933	251	742
						1934	61	868
idle						1935	431	930
						1936	293	810
12	1	1	1937	12	31	1937	676	070
3-12	1	1	1938	12	31	1938	421	545
(5-12 in Peabody # 18)								
						idle		1937
						idle		1938
							211,594	

SUMMARIES

No. to No.
1905 - 1930 (Summary)

7 963 874

~~7 766 177~~

~~7 963 874~~

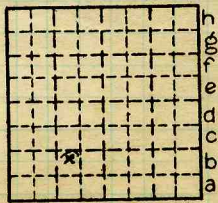
8 384 291

Railroad, Wagon, Idle, Abandoned 1937
IDENTIFICATION

County No. 264 Coal No. 6

Quad. 263 Part

County Franklin



Sec. 18

T. 7 N.
R. 3 E.
W.

Index No.

1018 66

COAL MINE—PRODUCTION



LOCATION AND ELEVATION

Location: side R. R.
 side R. R.
 side Highway No.

on top. map Location sheet **Map Files #5-28-28**

Elevation: Method, 1. Est. () _____ ft.
 2. Inst. (kind **PT**) **399.3** ft.

By **NB614 p.23-WBC.** Data sheet

2179DEPTH

Authority To coal _____ ft.
 Authority Rail to rail _____ ft.
 Top of coal above rail. (Est. Rule) _____ ft.
 To coal **501** ft.

ALTITUDE OF TOP OF COAL

By estimated data _____
 By instrumental data **-102** ft.

Thickness
 Max. in. Min. in. Aver. **120** in.

GEOLOGICAL DATA

Mine notes, date **1912**

Coop No. **51** Pyr. inv. Coal Ash inv.

CHEMICAL DATA

Analyses Face	U. I. 5008-9-11	B. M. U.S. 121-2-3	Others Ill. 1776-7
Car	U. I.	B. M.	Others
Org. Sulf	U. I.	B. M.	Others
Ash fusion	U. I.	B. M.	Others
Ash anal.	U. I.	B. M.	Others
#51	U. I.	B. M.	Others

Classification **R.I. 129 U.C.I. 146**

Misc. tests: Coking. Cleaning. Boiler

Published descriptions:—

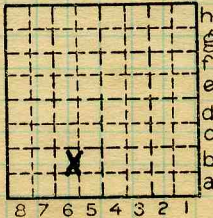
Railroad, Wagon, Idle, Abandoned

IDENTIFICATION

County No. **264**

Coal No. **6**
 Part

Quad. **W. Frankfort**
 County **Franklin**



Sec. **18**

T. **7** S.

R. **3** E.

Index No.

1018-6b

COAL MINE LOCATION AND DATA



Location and Elevation Data

Location: Exact Approximate
 (Approximate only if no trace or record of original exists)

Location by W.B. Roe
 Date July 30, 1932 Notebook No. 614 Page 23 (2179)
 Looseleaf ref. _____
 Map files No. 5-28-28

Description of location

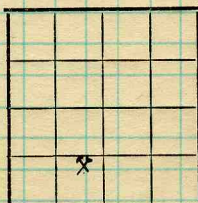
Position in sec., 1/4 sec., 40 acres

_____ feet from North line

_____ feet from East line

1100 feet from South line

2050 feet from West line



Sec.	18	
T.	7	S.
R.	3	E.

Other description: _____
 Farm _____
 No. _____
 Company Peabody Coal Co.
 No. 18 mine 19
 County No. 164



Elevation 402.5 ft.

By W.B. Roe

Method: Level, transit, alidade, hand level

Plane table and alidade

Elevation of Corb

Height of point above ground _____

Date July 30, 1932 Notebook 614 P. 23 (2179)

Looseleaf ref. _____

Map files No. 5-28-28

Description of item: (drill hole, mine, etc.) Air shaft - active shipping mine



COAL MINE NOTES.

1018

COUNTY *Franklin*

TOWN *West Frankfort*

MAP No. ~~*102-103*~~

T. *7 S*

R. *3 E*

S. *18 S.E. 1/4 S.W. 1/4*

OPERATOR *Brazil Block Coal Co.*

OFFICE *Chicago*

MINE *#11*

TIPPLE

ENGINES

BOILERS

DRUM

SHAFT

HAULAGE

CARS

VENTILATION

DRAINAGE

SPRINKLING

WORKING SYSTEM

MINING METHODS

Shot off the solid.

Sold to By Products Coke Corp.

See Coalage March 1917 Vol II p 57

(also mine No 18) CAGE



SIZE OF ENTRIES—MAIN

CROSS

ROOM

NECK

SIZE OF PILLARS—MAIN

CROSS

ROOM

SHAFT

CHAIN

BARRIER

AMOUNT OF TIMBERING

SIZE

PROPORTION OF COAL UTILIZED

AMOUNT AND CHARACTER OF WASTE

ACREAGE OF COAL MINED

ACREAGE OF COAL REMAINING

PROPORTION OF MINE RUN AND SCREENED COAL

METHOD OF SIZING

RESCREENED

SIZES

PER CENT

PROPORTION AND SIZE OF WASHED COAL

DAILY OUTPUT

UTILIZATION

MARKETS

FREIGHT RATES

**278 1018*

SELLING PRICES AT MINE

COAL LAND OWNED

LEASED

HELD IN FEE

COST OF LAND OWNED

LEASED

HELD IN FEE

ADDITIONAL NOTES



COAL MINE NOTES.

CONTINUED.

OPERATOR *Brazil Block Coal Co.* MINE #11
 ENTRANCE NAME OF COAL BED #7 1018
 ELEVATION 388 THICKNESS OF COAL
 DEPTH TO FLOOR 500. MAX. MIN. AV. 120"
 ALTITUDE OF COAL -112
 LOCATION OF SECTION *3rd Room 1st North off east.*

No.	SECTION.	In.
1	<i>Soapstone</i>	
2	<i>Soft Top coal</i>	<i>22</i>
3	<i>Coal</i>	<i>68</i>
4	<i>Blue Band</i>	<i>1/2</i>
5	<i>Coal</i>	<i>26</i>
6	<i>Fire clay</i>	
7		
8		
9		
10		
11		
12		
Tape		Total <i>116</i>

SAMPLE No. *G #128*

CAN No.

CONDITION

GROSS WEIGHT

TIME EXPOSED

NOT SHIPPED *Blue Band*

NOT INCLUDED #7

SECTION

Feet



PHYSICAL PROPERTIES BY NUMBERS

Sulphur balls scattered thru coal.

ROOF *Rather bad. Soapstone. Roof projects into Coal in a good many places as rolls.*

FLOOR

DIP

FAULTS, ETC. *One or two small faults reported.*

GAS

COLLECTOR *Groat Cady*

REFERENCE *M.B.7-P84 NB 96-P 32-64*

DATE

~~#128~~ 1018



No. 1 5th stub off 4 S.W.

8 ft. + 25 = 10 ft. 1 in.

3 ft. usually left for roof.

Parting good.

Coal throughout contains considerable mother of coal and seems dirtier than at Herrin. More CaCO_3 also.

Many small bands dirt and mother of coal all way to bottom.

Blue band - 2 ft. 9 1/2 in. from bottom, about 1-2 in. shale.

Floor had gray sandy shale.



UNDERGROUND DATA

F. Thickness of rock above bed worked,
 (1) Important variations, See

G. Note presence of strata having important effect on mining. See
 (1) Position,
 (2) Character,
 (3) Persistence,
 (4) Other workable coal beds, See

H. Cap rock, See
 (1) Thickness,
 (2) Height above coal,

I. Immediate roof See
 (1) Thickness, (2) Contact with coal,
 (3) Horizontal variation, See

J. Draw slate. (1) Thickness, (2) Contacts See
 (3) Persistence

K. Coal bed: Max. *11 ft* Min. *9* Av. *10 ft* inches
 (1) Benches,
 (a) Position,
 (b) Persistence, See
 (2) Bedded impurities, kind, position in benches, persistence, ease of separation.

(3) Irregularities in continuity of bed (due to deposition, erosion, or movement). See
 (a) Effect on mining, See

SECTION				
Ft.	In.	Name	Index	Sym.

Collector, Coal, State No. *1018*
 Mine, Co. Co-op. No. *57*



UNDERGROUND DATA (cont'd.)

- K. (5) Physical character of coal in benches,
 - (a) Relative hardness,
 - (b) Lustre,
 - (c) Fracture,
 - (d) Texture, See
- (6) Impurities in coal, other than bedded,
 - (a) Kind,
 - (b) Position and persistence,
 - (c) Rejected, Ease of separation, See
- L. Floor: (1) Material
- (2) Thickness
- (3) Variation
- (4) Note character, condition, tendency to heave, relation to undercutting, commercial value.

Undercut with punchers.

- (5) Clay sample No. Location, See
- M. Stratigraphy
 - (1) Fossiliferous horizons underground,
 - Collection No. Location,
- N. Notes on effect of deep drilling in coal mine areas.

See

Collector, Coal State No. **1018**
 Mine, Co. Co-op. No. *51*



#1 5th stub off 4 S.W.

8ft + 25 = 10ft. 1 in.

3ft usually left for roof.

Parting good.

Coal throughout contains considerable masses of coal + seems better than at Heron. More $CaCO_3$ also.

Many small bands dirt + masses of coal all way to bottom.

Blue band - 2ft 9 1/2 in from bottom about 1-2 in shale

floor hard gray sandy shale.

Series # 11.



COAL MINING INVESTIGATION

COOPERATIVE AGREEMENT

Operator, *W.C. Mablack* Date, *6/24*, 191*2*
 Mine, # *11* Located *1* miles* *N* from *W. Frankfurt*
 Location in mine, *3. Stab 6 South East*
 Total (vertical) depth from surface at point of sampling, *492* ft.

In describing the beds and character of the members, note any member that is rejected by the miner. Note all clay and sulphur partings, whatever their thickness. Exclude from sample all clay and sulphur partings $\frac{3}{8}$ inch thick or over (and even those of less thickness if they are rejected at mine or tippel).

SECTION OF BED AT POINT SAMPLED.

No.	DESCRIPTION.	FEET.	INCHES.
1	<i>Coal, clean & bright</i>	<i>4</i>	<i>11 3/4</i>
2	<i>Blue clay band</i>		<i>3/4</i>
3	<i>Coal clean & bright</i>	<i>2</i>	<i>3</i>
4			
5			
6			
7			
8			
9			
10			
11	<i>Top coal not</i>		
12	<i>included,</i>		
13			
14			
15			
16			
17			
	TOTAL.	<i>7</i>	<i>2 3/4</i>

Is coal ~~wet~~ or dry?

Time exposed, *5 55* hours, *1 54* minutes.

Weight, *5 55* gross, *1 54* net.

What are the impurities, and how do they occur? *Clay band.*

What are shipped? *1 3*

What are excluded from the sample? *2*

*Direction (N., NE., etc.) †Coal bed, *6* †Nearest railway station.

Town, *W. Frankfurt* Mine, # *11* Co. *Franklin*
 SAMPLE NO. *217* CAN NO. *217* No. *colp 51*

I.—COAL SAMPLE SHEET. Sampler.

#5008

1918



COAL MINING INVESTIGATION

COOPERATIVE AGREEMENT

Operator, *W.C. Black* Date, *6/27* 191*2*
 Mine, #*11* Located *1* miles* ~~*1/2*~~ from *W. Frankfort*
 Location in mine, *Room 4 Sub 6 South east*
 Total (vertical) depth from surface at point of sampling, *492* ft.

In describing the beds and character of the members, note any member that is rejected by the miner. Note all clay and sulphur partings, whatever their thickness. Exclude from sample all clay and sulphur partings $\frac{3}{8}$ inch thick or over (and even those of less thickness if they are rejected at mine or tippie).

SECTION OF BED AT POINT SAMPLED

No.	DESCRIPTION	FEET	INCHES
1	<i>Coal clear & tough</i>	<i>1</i>	<i>6</i>
2			
3			
4			
5			
6			
7			
8			
9			
10			
11	<i>Hop coal ? ✓</i>		
12			
13			
14			
15			
16			
17			
TOTAL,		<i>1</i>	<i>6</i>

Is coal ~~wet~~ or dry? *dry*
 Time exposed, *12* hours, *20* minutes.
 Weight, *12* gross, net.
 What are the impurities, and how do they occur? *None*

What are shipped? *total*
 What are excluded from the sample? *nothing*

*Direction (N., NE., etc.).

Coal bed, *6*
 †Nearest railway station

Town, *W. Frankfort* Mine, #*11* Co. *Franklin*
 Sample No. *25* Can No. *3-1* No. *1018*
 I.—COAL SAMPLE SHEET. Sampler. *Smith*

#5007



COAL MINING INVESTIGATION

COOPERATIVE AGREEMENT

Operator, *W. C. Niblack* Date, *6/12/1912*
 Mine, # *11* Located *1* miles* *W* from *W. Frankfort*
 Location in mine, *4 Stub 8 North East*
 Total (vertical) depth from surface at point of sampling, *500* ft.

In describing the beds and character of the members, note any member that is rejected by the miner. Note all clay and sulphur partings, whatever their thickness. Exclude from sample all clay and sulphur partings $\frac{3}{8}$ inch thick or over (and even those of less thickness if they are rejected at mine or tippie).

SECTION OF BED AT POINT SAMPLED

No.	DESCRIPTION	FEET	INCHES
1	Coal	2	4 1/2 ✓
2	Blue clay band		
3	Coal	1	3 1/2 ✓
4	Sulphur band		
5	Coal		10 ✓
6	Blue clay band		10 ✓
7	Coal	1	4 1/2 ✓
8	Blue clay band		
9	Coal	2	2 ✓
10			
11			
12			
13			
14			
15			
16			
17			
	TOTAL,	7	10

30
 Top coal not included.

Is coal ~~wet~~ or dry?

Time exposed, ~~53~~ hours, *53* minutes.

Weight, *170* gross, net.

What are the impurities, and how do they occur? *Blue clay bands*

What are shipped? *1 3 5 7 9*

What are excluded from the sample? *2 4 6 8*

Coal bed, *6*
 †Nearest railway station.

*Direction (N., NE., etc.).

Town, *W. Frankfort* Mine, # *11* Co. *Franklin*
 Sample No. *3* Can No. *310* No. *Co. of 51*

I.—COAL SAMPLE SHEET. Sampler.

#5009

J. M. W.
1018



COAL MINING INVESTIGATION

COOPERATIVE AGREEMENT

Operator, *W.C. Niblack* Date, *6/24* 1912
 Mine, *#4* Located *1* miles *N.W.* from † *W. Frankfurt*
 Location in mine, *Room 9, 5 stub 4*
 Total (vertical) depth from surface at point of sampling, *300* ft

In describing the beds and character of the members, note any member that is rejected by the miner. Note all clay and sulphur partings, whatever their thickness. Exclude from sample all clay and sulphur partings $\frac{3}{8}$ inch thick or over (and even those of less thickness if they are rejected at mine or tippie).

SECTION OF BED AT POINT SAMPLED

Are the specimens correct on this sheet?

No.	DESCRIPTION	FEET	INCHES
1	Coal	1	3
2	Blue clay band -		19
3	Coal	1	1
4	Blue clay band -		10
5	Coal		8
6	Blue clay band -		1
7	Coal		8
8	White clay-band -		1
9	Coal	2	8
10			
11			
12			
13			
14			
15			
16			
17			
TOTAL,		7	5 $\frac{1}{2}$

27

Top coal not included.

Is coal ~~wet~~ or dry?
 Time exposed, *72* hours, *2* minutes.
 Weight, *72* gross, net.
 What are the impurities, and how do they occur? *Blue clay band*

What are shipped? *2 4 6 8 10*
 What are excluded from the sample? *3 5 7 9*
 *Direction (N., NE., etc.). †Nearest railway station. *6*

Town, *W. Frankfurt* Mine, # *11* Co. *Franklin*
 Sample No. *4* Can No. *33* No. of *51*

I.—COAL SAMPLE SHEET. Sampler, *Jm.W.*
 #5011 1018