



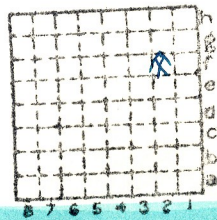
Form 180

R - F

Missouri & Illinois C

227

Mine Index 3489



Sec. 33

T.	1	N.
		S.
R.	7	E.
		W.

Index No.



COAL MINE NOTES.

COUNTY *St Clair.*

TOWN

MAP No. *8933*

T. *17.*

R. *7W*

S. *33. NE 1/4*

0833

OPERATOR *Missouri & Illinois Coal Co.*

OFFICE *St Louis*

MINE *Reitchler.*

TIPPLE *Wood*

ENGINES *second motion cylinders 12x24.*

BOILERS

DRUM *Wood 6'.*

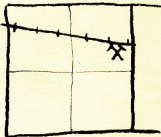
SHAFT *7'x16'*

CAGE *Handy dumps.*

HAULAGE *Mules.*

CARS *Wood 1 1/2 tons*

VENTILATION *Fan 15' blades 5' reversible.*



USED IN COAL REPT. 1912

DRAINAGE *dry.*

SPRINKLING

WORKING SYSTEM

MINING METHODS *Room & Pillar
Hand Mined. Shot on solid.
Cauder Bluffont F.*

SIZE OF ENTRIES—MAIN *9x24* CROSS *16-24* ROOM *30-35* NECK

SIZE OF PILLARS—MAIN CROSS ROOM

SHAFT CHAIN BARRIER

AMOUNT OF TIMBERING SIZE

PROPORTION OF COAL UTILIZED

AMOUNT AND CHARACTER OF WASTE

ACREAGE OF COAL MINED

ACREAGE OF COAL REMAINING

PROPORTION OF MINE RUN AND SCREENED COAL

METHOD OF SIZING *Shaker Screen.*

rotary RESCREENED
1"

SIZES *3, 2, 1 1/2*

PER CENT *30% screenings.*

PROPORTION AND SIZE OF WASHED COAL

DAILY OUTPUT

GEN'L COAL REPT. *227*

UTILIZATION *Steaming.*

MARKETS

FREIGHT RATES

SELLING PRICES AT MINE

0933 *0833E2*

COAL LAND OWNED LEASED HELD IN FEE

COST OF LAND OWNED LEASED HELD IN FEE

ADDITIONAL NOTES *Bins for screened coal 80 tons!*



COAL MINE NOTES.
CONTINUED.

0833

OPERATOR *Missouri & Illinois Coal Co.* MINE *Kentchler*
 ENTRANCE *Shaft.* NAME OF COAL BED # *6.*
 ELEVATION *470* THICKNESS OF COAL *84"*
 DEPTH TO FLOOR *114.* MAX. MIN. AV.
 ALTITUDE OF COAL *Top. 363.*
 LOCATION OF SECTION

USED IN JOINT REPORT 1912

No.	SECTION.	In.
1	<i>Top.</i>	<i>14" to 24"</i>
2	<i>9" Coal</i>	<i>10"</i>
3	<i>bluff. Coal</i>	<i>14</i>
4	<i>Block Coal</i>	<i>16 to 18"</i>
5	<i>Sulphur</i>	<i>1/2 to 1"</i>
6	<i>Coal</i>	<i>4 to 5"</i>
7	<i>Blue Band</i>	<i>1/4 to 1"</i>
8	<i>Bottom Coal</i>	<i>20 to 24"</i>
9	<i>Fireclay</i>	<i>6" to 3'</i>
10	<i>Ls</i>	<i>3' ±</i>
11		
12		
Tape		Total

SECTION	Feet
SAMPLE No.	
CAN No.	
CONDITION	<i>14" to 24"</i>
GROSS WEIGHT	<i>14"</i>
TIME EXPOSED	<i>16" to 18"</i> <i>1/2" to 1"</i>
NOT SHIPPED	<i>4" to 5"</i> <i>1/4" to 1"</i>
NOT INCLUDED	<i>20" to 24"</i> <i>Fire Clay.</i>

PHYSICAL PROPERTIES BY NUMBERS

Blue Band about 24" above fire clay and from 1/4" to 1" in thickness. has sulphur streak three eights in thickest part.

ROOF *Ls. 0'-3' Black Shale 2 1/2' White top ± 12'*

FLOOR *Fireclay 6" - 3'*

DIP *N.E. 1/2" to 3" dip greater to east than North 1/2" to 3'*

FAULTS, ETC.

GAS

0833 E.

COLLECTOR *Udden*

REFERENCE *U.B. 137 P. 46*

DATE *6-22-08*

3458