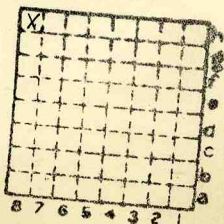




Form 180

JOHN SAMOLINSKI CC



Sec. 25

T. 33 N. S.

R. 1 E. S.

Index No.



Mine index 7667



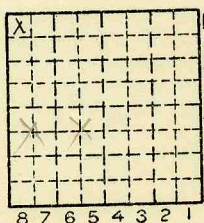
Location and Elevation Data

Location: Exact Approximate
 (Approximate only if no trace of record of original exists)
 Location by Dept Mines & Minerals
 Date 1940 Notebook No. Page
 Looseleaf ref.
 Map files No.

Description of Location

Position in sec., 1/4 sec., 40 acres

.....feet from North line
feet from East line
feet from South line
feet from West line



Sec. 25?
 T 33 N.
 S.
 R 1 E.
 W.

Other description: L-104

Farm.....
 No.....
 Company Samolinski & Sons

 No.....
 County No.....

1d61942

1940 Prod 54

Elevation.....ft.
 By.....

Method: Level, transit, alidade, hand level

Elevation of.....
 Height of point above ground.....
 Date..... Notebook..... P.....
 Looseleaf ref.....

Map files No.....

Description of item: (drill hole, mine, etc.) Drift Mine
5' to 30" of #2 coal

County LaSalle Quadrangle Index No.



272

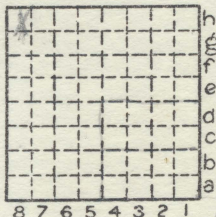
Location and Elevation Data

Location: Exact Approximate
 (Approximate only if no trace of record of original exists)
 Location by Dept Mines & Minerals
 Date..... Notebook No..... Page.....
 Looseleaf ref.....
 Map files No.....

Description of Location

Position in sec., 1/4 sec., 40 acres

.....feet from North line
feet from East line
feet from South line
feet from West line



Sec. 25?
 T 33 N.
 S.
 R 1 E.
 W.

Other description: 300' E + 300' S
of SE corner of the
1/4 of the SE 1/4
 33N2E ?
 Sec 25 from P.W. Maps

Farm.....
 No.....
 Company John Samolinski
Coal Co.
 No.....
 County No.....

Elevation.....ft.

By.....

Method: Level, transit, alidade, hand level

Elevation of.....

Height of point above ground.....

Date..... Notebook..... P.....

Looseleaf ref.....

Map files No.....

Description of item: (drill hole, mine, etc.).....

LOCAL MINE

County Quadrangle Index No.

28294-5M-5-5-37

La Salle

La Salle

16