

Sahara

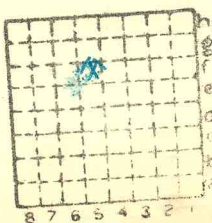
Q Gewa #5



Comma

590

ISGS Mine Index # 3291



Sec.

31

T.

9

S.

R.

6

E.

Index No.

Town, **438**
 Local Authority, **138**
300

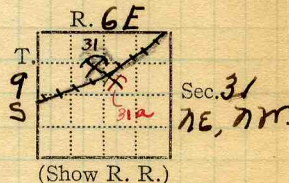
Surface alt., **432** ft.
 Depth to coal, **143** ft.
 Alt. top coal, **289** ft.
 Thickness: Av. **60** in.
 Max. in., Min. in.

Level: Auth., *Deuch NB97 p-73*

Method, **Elev. changed to
 accord with diff.
 between Saline Co #1
 + O'Gara #5 as determined
 by Deuchler.**

R. R.,

Location: authority,



Operator

Mine Name or No.

19 **O'Gara Coal Co.**

#5

Successor to
 Date
 Succeeded by
 Date
 Succeeded by
 Date

PRODUCTION.

								U. S. No.
19								

#590

Geol. Notes? **no**
 Analyses No.

Coop. No. Coal secs.? **no**

COUNTY

Examined by

Ref.

Coal bed name: Local **SHIPPING MINE**
 County **Saline**

Survey No. **5**
 Index No. **0831**

K. ACTIVE SHIPPING OR LOCAL COAL MINE.