

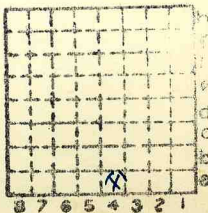


Form 180

Madison Coal. Corp #2.

121.

MI 415



Sec. 34

T. 4 ~~8~~ N.

R. 8 ~~4~~ W.

Index No.



Mine originally operated by: (1)

Date

1891

Madison Coal Corp.

Original name or number: *2 - Glen Carbon.*
 Illinois Coal Report p.

LATER OPERATORS

Date	Operator	Name or No.
2		
3		
4		
5		
6		
7		
8		
9		
10		
11		
12		
13		
14		

* Also owners

#See ownership sheet

Railroad, Wagon, Idle, Abandoned *1936*

SHIPPING MINE

IDENTIFICATION

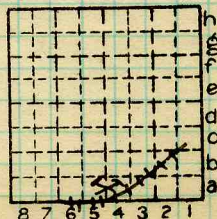
County No. *121*

Coal No. *6*

Quad. *226*

Part

County *Madison*



Sec. *34*

T. *4* N. ~~S.~~

R. *8* W. ~~E.~~

Index No.

1534.4a

COAL MINE OPERATOR



(Sheets) COAL PRODUCTION (Sheet)

Period				Tons	
Mo.	Day	Year	Mo.	Day	Year
		1926			(Daily Cap)
					2 800
		1927			(Total)
					333 168
		1931			
					145 616
		Idle			1932
					— —

SUMMARIES

No.	to	No.

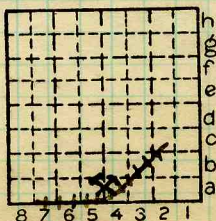
Railroad, Wagon, Idle, Abandoned 1932

IDENTIFICATION

County No. 121 Coal No. 6

Quad. 226 Part

County Madison



Sec. 34

T. 4 N.

R. 8 W.

Index No.

1537.4a

COAL MINE—PRODUCTION



LOCATION AND ELEVATION

Location: Folio #195 side side R. R. R. R.
side Highway No.

on top. map Location sheet

Elevation: Method, 1. Est. () _____ ft.
2. Inst. (kind _____) 476 ft.

By Bull. 11 (Chk. T.M) Data sheet

DEPTH

Authority To coal _____ ft.
Authority Rail to rail _____ ft.
Top of coal above rail. (Est. Rule) _____ ft.
To coal 93 ft.

ALTITUDE OF TOP OF COAL

By estimated data _____
By instrumental data 383 ft.

Thickness
Max. in. Min. in. Aver. 78 in.

GEOLOGICAL DATA

Mine notes, date _____

Coop No. 70 Pyr. inv. Coal Ash inv.

CHEMICAL DATA

Analyses Face	U. I.	<u>5515-17-18</u>	B. M.	Others
Car	U. I.		B. M.	Others
Org. Sulf	U. I.		B. M.	Others
Ash fusion	U. I.		B. M.	Others
Ash anal.	U. I.		B. M.	Others
	U. I.		B. M.	Others

Classification

Misc. tests: Coking. Cleaning Boiler

Published descriptions:—

Railroad, Wagon, Idle, Abandoned 1932

IDENTIFICATION

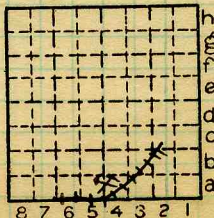
County No. 121

Coal No. 6

Quad. 226

Part

County Madison



Sec. 39

T. 4 N. S.

R. 8 E. W.

Index No.

1534.7a

COAL MINE LOCATION AND DATA



(35031-300-6-23) C. Moore Corporation, Rochester, N. Y. Binder and holes in leaves, each Patented 1906.

Mine Name or No. 2 Mine Address Glen Carbon

Operator Madison Coal Co

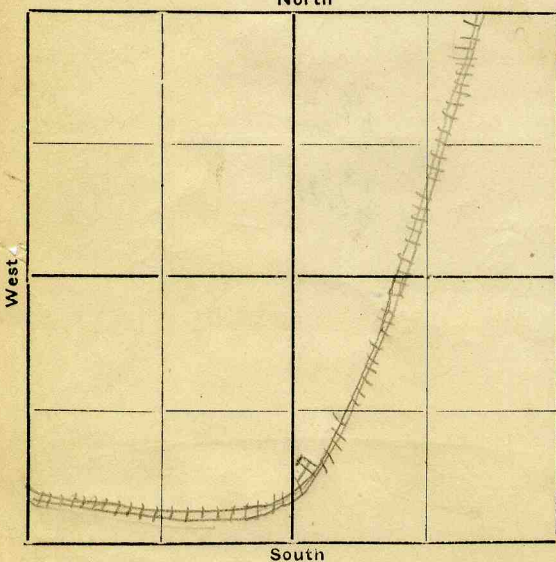
Main Office Address Room 1014, 910 S. Michigan Ave
Chicago Illinois

Location of Mine:

Township Name Edwardsville County Madison County

Section No. 34 Township 4 N Range 8 W

Indicate location of mine and position of R. R. in plat of section below.
North



Kindly state number of feet from quarter section lines:

----- from N. line

----- from E. line

----- from S. line

----- from W. line

Idle entire year 19----- Yes
No

Abandoned (date) 19-----

Surface landing is 479.9 feet above sea level or about ----- feet (above) (below) railroad station at ----- (nearest town).

Depth to top of coal is 85 feet.

Average thickness of coal is 7 feet 0 inches.

Do not fill in below this line.

Coal Bed Name ----- Survey No. 6

County Madison Index No. 1534

V-MINE LOCATION SHEET.

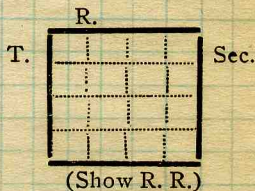


Town, *Glen Carbon*
Local Authority,

Surface alt., ft.
Depth to coal, *85* ft.
Alt. top coal, *294.9* ft.
Thickness: Av. *18* in.
Max. in., Min. in.

Level: Auth.,
Method,

R. R., *Illinois Central*



Location: authority, *Mine Maps.*

Operator

Mine Name or No.

Madison Coal Co

19

Successor to
Date
Succeeded by
Date
Succeeded by
Date

approp 3300

PRODUCTION.

19

U. S. No.

--	--	--	--	--	--	--	--	--	--	--	--	--	--	--	--	--	--

Geol. Notes?
Analyses No.

Coop. No.

Coal secs?

Examined by

Ref.

Coal bed name: Local
County *Madison*

Survey No. *6*
Index No. *1534*

K.—ACTIVE SHIPPING OR LOCAL COAL MINE.



F. Thickness of rock above bed worked,

(1) Important variations,

See

G. Note presence of strata having important effect on mining,

See

- Limestone Cap rock*
- (1) Position, *0 to 10 feet above coal*
 - (2) Character, *dense hard limestone*
 - (3) Persistence, *Yes*
 - (4) Other workable coal beds *-*

See

H. Cap rock, *Limestone*

- (1) Thickness, *3 to 10 (Estimate)*
- (2) Height above coal, *0 to 10 feet.*

See

I. Immediate roof, *limestone or shale*

- (1) Thickness, (2) Contact with coal, *even*

(3) Horizontal variation, *shale thickens and thins*

See

J. Draw slate, (1) Thickness, (2) Contacts

(3) Persistence, *-*

K. Coal bed: Max. Min. Av. *80* inches

- (1) Benches, *Upper and Lower*
 - (a) Position, *0 to 25" and 24" to top*
 - (b) Persistence, *Yes*

See *Coal Sect 102*

(2) Bedded impurities, kind, position in benches, persistence, ease of separation, *Blue band, clay lamina or band in upper bench and pyrite lamina that occupy same horizon as the clay bands.*

See *Coal Sect 102*

(3) Irregularities in bed (due to deposition, erosion, or movement), *Very little*

See

(a) Effect on mining,

See

SECTION			
Name	Ft.	In.	Sym.
<i>See Coal Sect 102</i>			

Collector,

Coal: Survey No. *6*

Mine, *Madison #2* Co. *Madison*

Index No. *1534*

Log of Drill hole on property
of Madison Coal Company, Glen
Carbon Illinois.

Typical of strata immediately
above coal

Surface soil	18' 0"
clay	4' 0"
soft shale	1' 6"
blue shale	2' 6"
blue shale	2' 0"
soft gray shale	11' 0"
sandy lime shale	12' 0"
cong. ls	1' 0"
limestone	5' 0"
lime shale	4' 0"
black shale	3' 0"
fire clay shale	5' 0"
limestone	3' 0"
lime shale	9' 2"
blue ls	3' 4"
shale	4' 8"
Coal	

SECTION



259693

K. (5) Physical character of Coal,

- (a) Relative hardness, *Medium hard coal, Bottom coal hardest, Very top firm*
 (b) Lustre, *Fairly bright, with dull bands*
 (c) Fracture, *irregular*
 (d) Texture, See

- (6) Impurities in coal, other than bedded, kind, position, persistence, ease of separation, etc. *Some pyrite and calcite facings that rattle loose, but all other impurities such as pyrite lenses are merely replacements of clay seams and are here considered as bedded* See

L. Floor: (1) Material, *Fire Clay*(2) Thickness, *?*(3) Variation, *Apparently very little*

- (4) Note character, condition, tendency to heave, relation to undercutting, commercial value. *—*

See

(5) Clay sample No. *A-178 and A182* Location,M. Stratigraphy, *—*(1) Fossiliferous horizons underground, *—*Collection No. *—*Location, *—*N. Notes on effect of deep drilling in coal mine areas. *—*

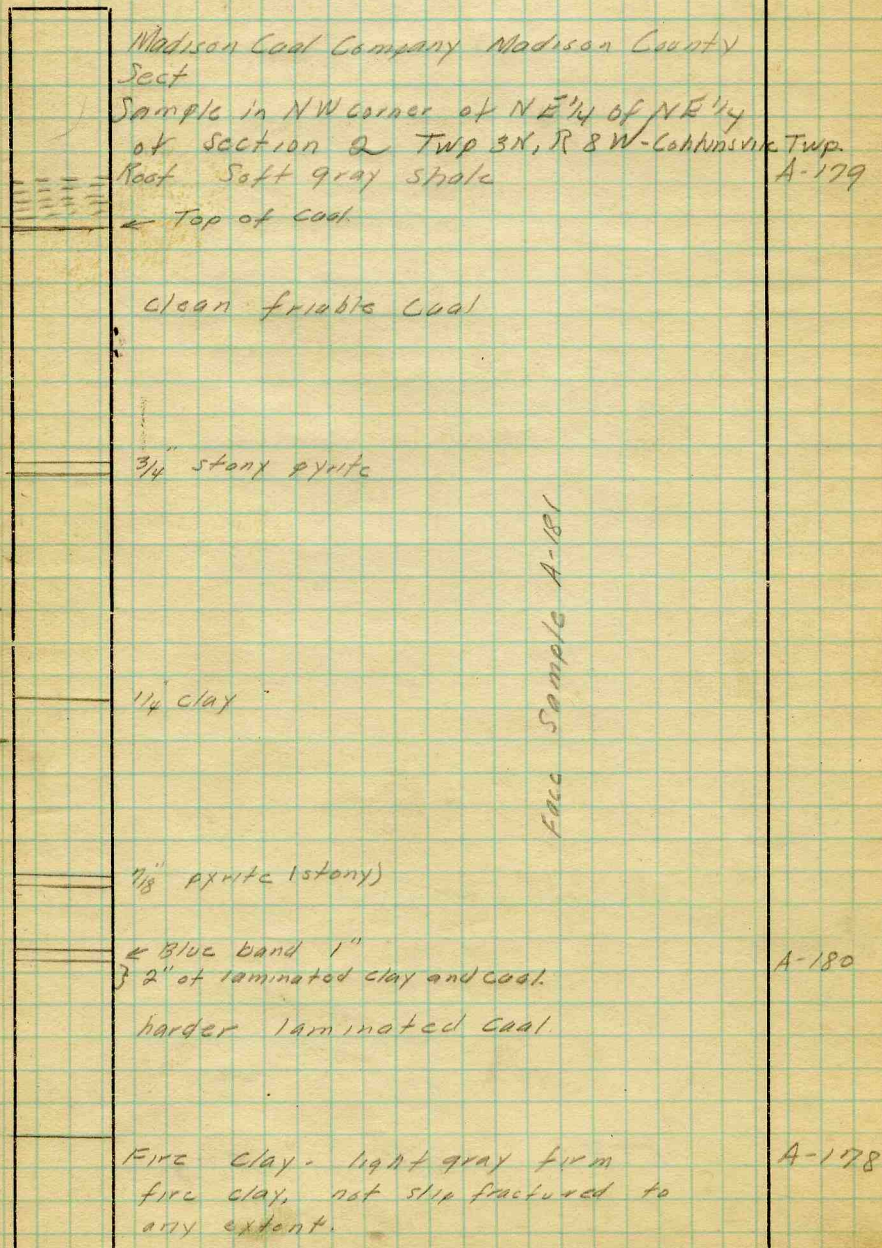
See

Collector, *Madison Coal Company*
 Mine, *No 2* Co. *Madison*Cola: Survey No. *6* Index No. *1534*



Symbol Description Inches

1 division = 3 in.



Collector. *Madison Coal Company*
 Mine. No *7* Co. *Madison*
 Q.—COAL SECTION SHEET. # *1*

Coal: Survey No. *6*
 Index No. *1534*





Symbol Description Inches

1 division=3 in.]

Madison Coal Co, Madison County.
Sect

Sample in SW corner of SE $\frac{1}{4}$ of
SE $\frac{1}{4}$ of Sect 4. Twp 3N R 8 W
Collinsville Twp.

← 2" of soft clod, black shaly material
← Top of Coal

A-183

Bright friable coal.

$\frac{3}{8}$ " clay thickens to $\frac{3}{4}$ "

friable coal

$\frac{3}{8}$ " clay, in places pyritized

Falc Sample A-188
Hand Specimens A-189

A-186

A-187

$\frac{1}{2}$ " stony pyrite and replaced Mother Coal

A-185

$\frac{1}{2}$ " Blue band

A-184

Hard laminated coal

Fire Clay - light gray and
soft. Not slip fractured and
No root impressions

A-182

Collector, Madison Coal Company
Mine. No 2 Co. Madison

Coal: Survey No. 6
Index No. 1534

Q.—COAL SECTION SHEET. #2



INDEX

Bedded Impurities

Blue band - The blue band in this mine in No 6 coal averages about 1" thick and is fairly uniform. However at the point where coal section #1 was taken there was 2" of coal with clay lamina just below the blue band proper. This condition had not been noticed before in this mine or in previous mines.

In places the blue band has been pyritized and is very hard but as a rule is soft clay and probably plastic if ground.

In the upper bench there are several clay band horizons that are fairly continuous but which the clay lamina vary from a mere parting to $\frac{3}{4}$ " in 25 feet or so. These clay lamina or bands or lenses are pyritized in places, becoming hard stony pyrite bands. Although the pyrite may be secondary, these bands are considered in this report, as well as in the previous ones on No 6 coal as bedded impurities.

"b" *Continuation and*

Collector *Madison Coal Co*
 Mine *No 2* Co. *Madison*

Coal: Survey No. *6*
 Index No. *1534*



INDEX

A Bedded Impurities.

Blue band - persistently 1" thick and does become pyritized in some places. Also clay lenses or lamina that laterally grade into stony pyrite.

'B Concretions or segregations

No true concretions or segregations were observed.

'C Lenticular clay masses.

None other than those mentioned in "A." It is merely arbitrary to distinguish between a bedded clay band of limited extent and a clay lense. These clay horizons are relatively thin but extend for a hundred feet or more and occupy a definite horizon that can be traced still further and hence are classed in the bedded impurities.

'D Joint filling and facings.

Facings of pyrite and calcite are quite plentiful but is of less importance than the clay in contributing to the ash content.

'E' Crack fillings and horsebacks

None observed but have been found.

'F' None

'G' "

'H' "

'I' "

Collector Madison Coal Company

Mine No 2 Co. Madison

X.—EXTRA SHEET No. No 1

Coal: Survey No. 6

Index No. 1534



COAL MINE NOTES.

COUNTY *Madison* TOWN *Glen Carbon* MAP No. *1534*
T. *4N* R. *8W* S. *34 near center of S. line.*
OPERATOR *Madison Coal Corporation*
OFFICE *St. Louis Mo*
MINE *#2*

USED IN COOP. REPT. 1912.

TIPPLE
ENGINES
BOILERS
DRUM
SHAFT CAGE
HAULAGE
CARS
VENTILATION

DRAINAGE
SPRINKLING
WORKING SYSTEM
MINING METHODS
With Pick machines.

SIZE OF ENTRIES—MAIN CROSS ROOM NECK
SIZE OF PILLARS—MAIN CROSS ROOM
SHAFT CHAIN BARRIER
AMOUNT OF TIMBERING SIZE
PROPORTION OF COAL UTILIZED
AMOUNT AND CHARACTER OF WASTE

ACREAGE OF COAL MINED
ACREAGE OF COAL REMAINING
PROPORTION OF MINE RUN AND SCREENED COAL
METHOD OF SIZING RESCREENED
SIZES
PER CENT
PROPORTION AND SIZE OF WASHED COAL
DAILY OUTPUT
UTILIZATION
MARKETS
FREIGHT RATES
SELLING PRICES AT MINE
COAL LAND OWNED LEASED HELD IN FEE
COST OF LAND OWNED LEASED HELD IN FEE
ADDITIONAL NOTES *Considerable Water quite acid.*

1534



Green Carbon

#1+2.

#3 - S = 475
 No6 - 7'6" . 372.0 Top

4 - S = 481.8"
 No6 = 380.2" 7'5" 387.6
 313.0 1'0" 314.8
 0.6" 275.7

5. S = 545'
 No6 348.5' - 8'0" 356.5
 240 0'8" 240.7

6 S = 502.6
 No6 7'6" . 357.1' Top 364.6
 1'9 272.4' 1 277.4
 2'6" 237.6 240.1



COAL MINE NOTES.

CONTINUED.

OPERATOR *Madison Coal Corporation.* MINE #2
 ENTRANCE *Shaft.* NAME OF COAL BED #6
 ELEVATION *476* THICKNESS OF COAL *78"*
 DEPTH TO FLOOR *100* MAX. MIN. AV. *78"*
 ALTITUDE OF COAL *376*
 LOCATION OF SECTION *3rd room off 4th stubb off 7th East Entry.*

USED IN COOP. REPT. 1913

No.	SECTION.	In.
1	<i>Ls.</i>	<i>6'</i>
2	<i>Slate</i>	<i>6' to 2"</i>
3	<i>Coal</i>	<i>32</i>
4	<i>Dark slate</i>	<i>1/2</i>
5	<i>Coal</i>	<i>29</i>
6	<i>Blue Band</i>	<i>1/2</i>
7	<i>Coal</i>	<i>6 1/2</i>
8	<i>Blue Band</i>	<i>1</i>
9	<i>Coal</i>	<i>14</i>
10	<i>Fire Clay several feet.</i>	
11		
12		
Tape		Total

SECTION

SAMPLE No.

CAN No.

CONDITION

GROSS WEIGHT

TIME EXPOSED

NOT SHIPPED

NOT INCLUDED *2, 4, 6, 8 + 10*



PHYSICAL PROPERTIES BY NUMBERS

#6 is not as persistent as #8

ROOF *slate 2" to 6' Cap Rock Ls. Roof good.*

FLOOR *Fire Clay.*

DIP

FAULTS, ETC.

GAS *No Gas*

COLLECTOR *Groul.*

REFERENCE *N.B. 7, P 34 + 35.*

DATE

1534



COAL MINING INVESTIGATION

Cooperative Agreement

Operator, *Madison Coal Corp* Date, *9-29* 1912

Mine, *A 2* Located *-* miles *-* from *Glen Carbon*

Location in mine, *#9 Roomful Back "Free-Cligue"*

Total (vertical) depth from surface at point of sampling *5500' from shaft*
180'

In describing the beds and character of the members note any member that is rejected by the miner. Note all clay and sulphur partings, whatever their thickness. Exclude from sample all clay and sulphur partings 3/8 inch thick or over (and even those of less thickness if they are rejected at mine or tipple).

Section of Bed at Point Sampled

No.	Description	Feet	Inches
1	Coal, Bright	—	—
2	Sulphur streak	—	2/4
3	Coal, Bright	—	—
4	Sulphur streak	—	4 1/2
5	Coal, Bright	2	0
6	Sulphur streak	—	1/4
7	Coal, Bright	—	—
8	Shale Parting	—	1 3/4
} See next page for Total		297	—
} Continued section			

Is coal wet or dry? *Wet*
 Time exposed, *48* hours *55* minutes.
 Weight, *48* gross, *8* net.
 What are the impurities, and how do they occur? *Sulphur*
 What are shipped? *all less 1/4" impurities*
 What are excluded from sample? *2 1/2" - 6" - 8" - 10"*

#5515 *14-10-18* Coal bed, *6*

Town, *Glen Carbon* Mine, *#2* Co. *1534*
 Sample No. *70C* Can No. *ME 16* No. *70*
 I.--COAL SAMPLE SHEET. Sampler, *W.C. ...*



COAL MINING INVESTIGATION

Cooperative Agreement

Operator, *Madison Coal Corp.* Date, *8-29* 1912

Mine, # *2* Located — miles — from *Glen Carbon*

Location in mine, *8th N. off 3rd E.*
Entry face 3500' from shaft.

Total (vertical) depth from surface at point of sampling *120'*

In describing the beds and character of the member note any member that is rejected by the miner. Note all clay and sulphur partings, whatever their thickness. Exclude from sample all clay and sulphur partings 3/8 inch thick or over (and even those of less thickness if they are rejected at mine or tipple).

Section of Bed at Point Sampled

No.	Description	Feet	Inches
1	Coal Bright	2	0 1/4
2	Sulphur Streak		
3	Coal Bright	1	1
4	Sulphur Streak		
5	Coal Dull		1/4
6	Blue Band	296	7 1/2
7	Coal Bright	1	1
8	Roof - Limestone		
9	Floor - Fire Clay		
10	Output - 1200 T	Total	5' - 10"

Is coal wet or dry? *Dry*
 Time exposed, — hours *50* minutes.

Weight, *42* gross, net.

What are the impurities, and how do they occur? *Sulphur*

What are shipped? *#1 1-2-3-4-5-7*

What are excluded from sample? *1-3-5-7 #6*
 Coal bed, *6*

#5517

Town, *Glen Carbon* Mine, # *2* *Madison Coal Corp.*
 Sample No. *70A* Can No. *ME 12* Co. No. *701534*
 I. -- COAL SAMPLE SHEET. Sampler, *med & flat board*
Madison



COAL MINING INVESTIGATION

Cooperative Agreement

Operator, *Madison Coal Corp* Date, *8-29* 1912

Mine, *#2* Located *-* miles *-* from *Glen Carbon*

Location in mine, *#2 Room face off main S.*

Total (vertical) depth from surface at point of sampling *4800 from shaft*
150'

In describing the beds and character of the members note any member that is rejected by the miner. Note all clay and sulphur partings, whatever their thickness. Exclude from sample all clay and sulphur partings 3/8 inch thick or over (and even those of less thickness if they are rejected at mine or tippie).

Section of Bed at Point Sampled

No.	Description	Feet	Inches
1	Coal, Bright	-	8
2	Sulphur streak	-	1/4
3	Coal - Bright	1	1/4
4	Sulphur streak	-	1/2
5	Coal, Bright	-	7 1/2
6	Clay parting	29 1/2	1/2
7	Coal, Dull streak	-	1/2
8	Sulphur streak	-	1/2
9	Outcrop - 1200T		
10	Block Slate Roof Floor - Fire Clay		
		Total	<i>Section continued on next sheet</i>

Is coal wet or dry? *Dry*

Time exposed, *-* hours *50* minutes.

Weight, *45* gross, *Sulphur* net.

What are the impurities, and how do they occur? *Dirt - 1/2 pound*

What are shipped? *1-2-3-4-5-7-9-10-11-13*

What are excluded from sample? *2-4-6-8-10-12* Coal bed, *6*

Town, *Glen Carbon* Mine, *#2* Co., *Madison Coal Corp*

Sample No. *70 B* Can No. *ME 15* No. *70 1534*

1.--COAL SAMPLE SHEET. Sampler. *next sheet*

#5518



COAL MINING INVESTIGATION

Cooperative Agreement

Operator, *Madison Coal Corp* Date, *8-29* 1912

Mine, *#2* Located *1 1/2* miles from *1 1/2 miles from*

Location in mine, *2nd Room down off main S.*
4800 from shaft

Total (vertical) depth from surface at point of sampling *150'*

In describing the beds and character of the members note any member that is rejected by the miner. Note all clay and sulphur partings, whatever their thickness Exclude from sample all clay and sulphur partings 3/8 inch thick or over (and even those of less thickness if they are rejected at mine or tippie).

Section of Bed at Point Sampled

No.	Description	Feet	Inches
1	Coal, Bright		6
2	Sulphur streak		1/4
3	Coal - Bright		1
4	Sulphur streak		1/4
5	Clay Parting		2 1/2
6	Coal, Dull		1
7	Sulphur streak		1/2
8	Outcrop - 1200'		
9	Block Slope Roof		
10	Floor - Fire Clay		
	Total		

Section continued on next sheet

Is coal wet or dry? *Dry*

Time exposed, *45* hours *50* minutes.

Weight, *45* gross, net.

What are the impurities, and how do they occur? *Sulphur*

What are shipped? *1-2-3-4-5-7-9-10-11-12-13*

What are excluded from sample? *6*

2-4-6-8-10-12 Coal bed,

Town, *Glen Carbon* Mine, *#2*

Sample No. *70 B* Can No. *175 15* No. *1534*

1.--COAL SAMPLE SHEET. Sampler.



COAL MINING INVESTIGATION

Cooperative Agreement

Operator, *Madison Coal Co.* Date, *8-29* 1912
 Mine, *A 2* Located *—* miles *—* from *Glendon Carbon*
 Location in mine, *190' from top of "Free-Cligue" 5000' from shaft.*
 Total (vertical) depth from surface at point of sampling *180'*

In describing the beds and character of the members, note any member that is rejected by the miner. Note all clay and sulphur partings, whatever their thickness. Exclude from sample all clay and sulphur partings 3/8 inch thick or over (and even those of less thickness if they are rejected at mine or tipple).

Section of Bed at Point Sampled

No.	Description	Feet	Inches
1	Coal, bright	—	—
2	Sulphur streak	—	—
3	Coal, bright	—	—
4	Sulphur streak	—	—
5	Coal, bright	—	—
6	Sulphur streak	—	—
7	Coal, bright	—	—
8	Sulphur streak	—	—
9	Coal, bright	—	—
10	Shale parting	—	—
Total		2-	0 1/4

See next page for continued section

Is coal wet or dry? *Wet*
 Time exposed, *55* hours *minutes.*
 Weight, *79* gross, *—* net.
 What are the impurities, and how do they occur?
 What are shipped?
 What are excluded from sample?

Coal bed *#6*

Town, *Glendon Carbon* Mine, *—*
 Sample No. *706* Can No. *M.E. 16* No. *20* **1534**
 1.--COAL SAMPLE SHEET. Sampler.



COAL MINING INVESTIGATION

Cooperative Agreement

Operator, *Madison Coal Corp.* Date, *8-29* 1912

Mine, *#2* Located *—* miles from *Glenn Carbon*

Location in mine, *Entry face 8 1/2 ft N of 3rd E. 3500' from shaft.*

Total (vertical) depth from surface at point of sampling *120'*

In describing the beds and character of the members note any member that is rejected by the miner. Note all clay and sulphur partings, whatever their thickness. Exclude from sample all clay and sulphur partings 3/8 inch thick or over (and even those of less thickness if they are rejected at mine or tipple).

Section of Bed at Point Sampled

No.	Description	Feet	Inches
1	Coal Bright	2	0 1/4
2	Sulphur streak		
3	Coal Bright	1	1
4	Sulphur streak		
5	Coal Dull		1/2
6	Blue band	1	7/8
7	Coal Bright	1	1
8	Roof - Limestone		
9	Floor - Fine clay		
10	Output - 1200 T	Total	5' - 10"

Is coal wet or dry? *Dry*

Time exposed, *42* hours *50* minutes.

Weight, *1 - 2 - 3 - 4 - 5* gross, *Submitter* net.

What are the impurities and how do they occur?

What are shipped? *1-3-5-7#6*

What are excluded from sample? Coal bed, *6*

Town, *Glenn Carbon* Mine, *#2* Sample No. *70 FT* Can No. *ME 12* No. *70 1534*