

2089

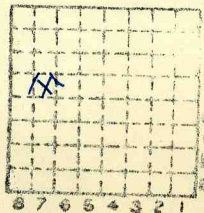


Form 180

F. & M. C. C.  
(Moore cc)

L 2

333



Sec. 36

T. 4 <sup>N.</sup>

R. 9 <sup>E.</sup>

Index No.

✓ Mine Index 2904



Mine originally operated by: (1)

Date F. Hausman

L-2

Original name or number:

Illinois Coal Report \_\_\_\_\_ p.

LATER OPERATORS

Date	Operator	Name or No.
2	<u>Roscoe MOORE</u>	
3		
4	<u>1942 FLM Coal Co</u>	<u>Tulvan Falconer Litchfield Ill</u>
5		
6		
7		
8		
9		
10		
11		
12		
13		
14		

\* Also owners

#See ownership sheet

Railroad, Wagon, Idle, Abandoned Shaft Mine

LOCAL MINE

IDENTIFICATION L-2

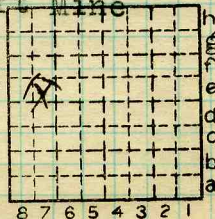
County No. 333

Coal No. 6

Quad. 199

Part

County Macoupin



Sec. 36

T. 7 N. S.

R. 9 E. W.

Index No.

COAL MINE OPERATOR

2136.E7

L ✓



LOCATION AND ELEVATION

Location: side R. R.  
 side R. R.  
 side Highway No.

on top. map Location sheet

Elevation: Method, 1. Est. ( ) ft.  
 2. Inst. (kind PT) 576.9 ft.

By EFT 9-59-29 Data sheet

DEPTH

Authority To coal 120 ft.  
 Authority Rail to rail \_\_\_\_\_ ft.  
 Top of coal above rail. (Est. Rule) \_\_\_\_\_ ft.  
EFT To coal 115 ft.

ALTITUDE OF TOP OF COAL

By estimated data \_\_\_\_\_  
 By instrumental data \_\_\_\_\_

461.9 ft.

Thickness

Max. 66 in. Min. 54 in. Aver. 60 in.

GEOLOGICAL DATA

Mine notes, date \_\_\_\_\_

Coop No. Pyr. inv. Coal Ash inv.

CHEMICAL DATA

Analyses Face	U. I.	B. M.	Others
Car	U. I.	B. M.	Others
Org. Sulf	U. I.	B. M.	Others
Ash fusion	U. I.	B. M.	Others
Ash anal.	U. I.	B. M.	Others
	U. I.	B. M.	Others

Classification

Misc. tests: Coking. Cleaning Boiler

Published descriptions:—

Railroad, Wagon, Idle, Abandoned shaft

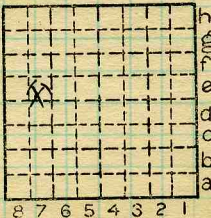
IDENTIFICATION

County No. 333

Coal No. 6

Quad. 199  
 County

Part



Sec. 36

T. 7 N.

R. 9 W.

Index No.

Macoupin

COAL MINE LOCATION AND DATA

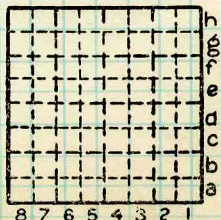
2136.E7

The Fred Hausman mine and the Roscoe Moore mine are the same (1935 Coal Rpt.).

F. Hausman operates the escape shaft and R. Moore the main shaft.

--from Joseph Firth, Mine Inspector

By EFT Date 6/7/37  
Quad. \_\_\_\_\_ Part \_\_\_\_\_  
County MACOUPIN



Sec. 36  
T. 7 N. 7  
R. 9 W. 9  
Index No.