



Form 180

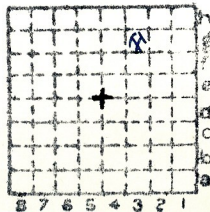
R F

ISGS # 3551

Southern ZMC

265

Mine Index



Sec. 12

T. 1 N.

R. 9 W.

Index No.



Mine originally operated by: (1)

Date
1888

Southern Coal & Mining Co.

Original name or number: Avery (No. 17?)
Illinois Coal Report p.

LATER OPERATORS

Date	Operator	Name or No.
2 1911	Southern Coal Coke & Mg Co	Avery No. 1
3		
4		
5		
6		
7		
8		
9		
10		
11		
12		
13		
14		

* Also owners

#See ownership sheet

Railroad, Wagon, Idle, Abandoned

1936 19314 4/1936

IDENTIFICATION

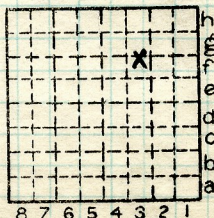
County No. 265

Coal No. 6

Quad. French Village

Part 6

County St Clair



Sec. 12

T. 1 N.

R. 9 W.

Index No.

COAL MINE OPERATOR

0612-3g



(Sheets) COAL PRODUCTION (Sheet)

N No.	Period						Tons		
	Mo.	Day	Year	Mo.	Day	Year			
1	1	1	1931	12	31	1931	29	747	Local
2			1932			1932	17	620	"
3			1933			1933	27	177	"
4			1934			1934	28	134	"
5			1935			1935	16	987	"
15	1	1	1936	12	31	1936	13	317	Shipping

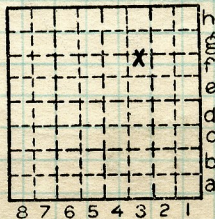
SUMMARIES

No. to Dec 31/30 No. 2 421 124

Railroad, Wagon, Idle, Abandoned
IDENTIFICATION

County No. 265 Coal No. 6

Quad. Fr. Village Part 6
County St. Clair



Sec. 12

T. 1 N.

R. 9 W.

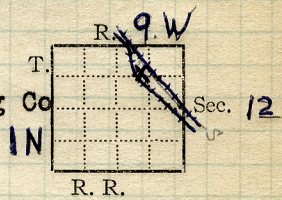
Index No.

0012 3g

COAL MINE—PRODUCTION



Mine Name or No., **Avery**
3 miles **NW** from **Belleville**
 Operator, 191 **Southern Coal Coke & Mining Co**
 Operator, 191



Entrance, **Shaft** Elev., **580** ft. $\left\{ \begin{array}{l} \text{above,} \\ \text{below,} \end{array} \right.$
 Depth to bottom coal, ft. Alt.

SURFACE DATA.

- A. Topography, See
 B. Surficial materials. (1) Character,
 (2) Thickness, (3) Effect on mining and shaft-sinking, of former
 drainage lines, underground water strata, etc.

- C. Outcrops, (1) Character, See
 (2) Structure, See
 (3) Fossil horizons, See
 Collection No.,
 (4) Evidences of subsidence, See
 D. Note collection of mine maps, drill records and shaft logs.

See drill record sheet,

- E. Notes on surrounding area,

GEN'L COAL REPT. 265

See

Coal bed name: Local, Survey No. 6
 Collector, **Cady** **Sept 8, 1918**
 Mine, **Avery** **Co. St Clair** Index No. **06123f**
L.—SURFACE SHEET (Geol.)



LOCATION AND ELEVATION

Location: **SW** side **Southern** R. R.
NW side **Suburban** R. R.
SW side Highway No. **S.R. 15**

on top. map **225d** Location sheet **13-87-446**

Elevation: Method, 1. Est. () ft.
 2. Inst. (kind **Planetable**) **585.0** ft.

By **W. B. Roe 10-8-30** Data sheet

DEPTH

Authority **W. F. Davis, Genl. Supt.** To coal **173** ft.
 Authority **1936 Coal Report, p. 105** Rail to rail **160** ft.
 Top of coal above rail. (Est. Rule) **6.5** ft.
 To coal **153.5** ft.

ALTITUDE OF TOP OF COAL

By estimated data _____

By instrumental data _____

431.5 ft.

Thickness

Max. **96** in. Min. **77** in. Aver. **84** in.

GEOLOGICAL DATA

Mine notes, date **Yes** _____

Coop No. _____ Pyr. inv. _____ Coal Ash inv. _____

CHEMICAL DATA

Analyses Face	U. I.	B. M.	Others
Car	U. I.	B. M.	Others
Org. Sulf	U. I.	B. M.	Others
Ash fusion	U. I.	B. M.	Others
Ash anal.	U. I.	B. M.	Others
	U. I.	B. M.	Others

Classification

Misc. tests: Coking. _____ Cleaning _____ Boiler _____

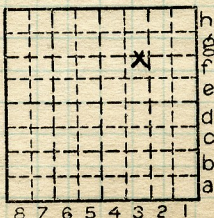
Published descriptions:—

Railroad, Wagon, Idle, Abandoned

IDENTIFICATION

County No. **265** Coal No. **6**

Quad. **French Village** Part **6**
 County **St Clair**



Sec. **12**

T. **1** N.
 R. **9** W.

Index No.

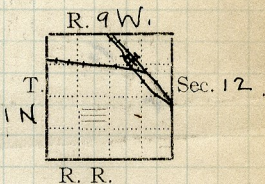
0612 3g

COAL MINE LOCATION AND DATA



COAL MINING INVESTIGATIONS
COOPERATIVE AGREEMENT

Mine Name or No., Fvery (No. 17)
 mile from
 Operator, 191 Southern Coal & Mining Co.
 Operator, 191



Entrance, SHAFT Elev., 580 ft. { above,
 Depth to bottom coal, ft. Alt.

Loc.: Letter to So. C. C. & M'g. Co.

SURFACE DATA.

- A. Topography See
- B. Surficial materials, (1) Character See
- (2) Thickness, (3) Effect on mining and shaft-sinking, of former drainage lines, underground water strata, etc.

COUNTY

- C. Outcrops, (1) Character, See
- (2) Structure, See
- (3) Fossil horizons See
- Collection No.,
- (4) Evidences of subsidence, See
- D. Note collection of mine maps, drill records and shaft logs.

See drill record sheet.

E. Notes on surrounding area,

See

Coal bed name: Local, # 6

Survey

Collector,

State No. 06123f

Mine, Fvery (No. 17)

Co. St. Clair Co-op. No. 0712f

L.—SURFACE SHEET (Geol.)



K. (5) Physical character of coal in benches, **Best coal the top**
 (a) Relative hardness, **and block coal. Drift and**
bottom coal dirty and rather soft

(b) Lustre,

(c) Fracture,

(d) Texture,

See

(6) Impurities in coal, other than bedded, **Some sulphur along**

(a) Kind, **slips or rolls in coal**

(b) Position and persistence,

(c) Rejected, **Yes** Ease of separation,

Considerable coal thrown out with sulphur

See

L. Floor: (1) Material, **Fire clay**

(2) Thickness, **About 1 foot**

(3) Variation,

(4) Note character, condition, tendency to heave, relation to undercutting commercial value.

Heaves a little

See

(5) Clay sample No.

Location,

M. Stratigraphy,

(1) Fossiliferous horizons underground,

Collection No.

Location,

N. Notes on effect of deep drilling in coal mine areas.

See

Collector, **Cady Sept 8, 1918**
 Mine, **Avery** Co. **St Clair**
 N.—UNDERGROUND SHEET (Geol.)

Coal: Survey No. **6**

Index No. **06123f**



INDEX

H-1K

The conditions in this mine are typical for the mines west of Belleville. The roof varies from rock (and clod) to black slate. The rock roof is excellent. The clod is only 1 to 8" thick and comes down with the coal. The only irregularity under the rock roof is an occasional slip or "roll" in the coal beneath a crack or fracture in the cap rock. These cracks are not commonly clay filled but they are found closely cemented with pyrite.

The black slate lies between the coal and cap rock where it is present. It is full of slips and is practically impossible to hold. Mining conditions are not of the best under this roof. It is treacherous and must be watched constantly.

The roadways and rooms are piled high with this black slate, which has had to be moved. This is understood when the black slate is encountered so that it does not actually represent a serious mining problem as they do not try to keep it up to any extent.

The coal lies very regular except for an occasional shrinkage (?) fault which are described as rolls. In one instance the coal was displaced nearly two feet.

Collector Cady Sept 8, 1918
 Mine Avery Co. St Clair
 X.—EXTRA SHEET No.

Coal: Survey No. 6
 Index No. 06123f



Symbol Description Inches

Room 25 back west entry

Roof: black slate

Top coal
"9-inch"

Drift

Clay

Block

Clay and pyrite
"4-inch"

Blue band

Bottom coal

13
11 1/2
13 1/2
1 1/4
20 1/2
1 1/2
4 1/2
1 1/2
23

Tape 86"

(Scale: 1 division = 3 inches).

Sample No.

Can No.

Lab. No.

Collector, **Cady** Sept 8 1918
Mine, **Avery** Co. **St Clair**

Coal: Survey No. 6
Index No. **06123f.**

Q.—COAL SECTION SHEET.



Symbol Description Inches

Room #2 Wnd south off 2 east off north

Roof: slate

Top coal

"9-inch"

Drift

Sulphur

Block coal

Sulphur

"4-inch"

Blue band

Coal

Sulphur

Coal

25 1/4
27
27 3/4
41
41 1/2
45
45 3/4
46 1/4
46 3/4
72 3/4

14 1/2
11
12 1/2
14 1/2
14
3 1/2
3 3/4
3 1/2
26

Floor: fire clay

Rather more sulphur than usual

Average about 1" in this room

(Scale: 1 division = 3 inches).

Sample No.

Can No.

Lab. No.

Collector,

Coal: Survey No.

Mine,

Co.

Index No.

06123f.

Q.—COAL SECTION SHEET.



Symbol Description Inches

Room 15 Loop entry north side
(west from main north)

Roof : Black slate

1	coal (top)		14
2	Clay		1/16
3	Coal ("9-inch")	21 1/16	7
4	Clay	21 5/16	1/4
5	Coal	23	2
6	Clay (Drift)	25 9/16	1/4
7	Coal	35 1/16	11 1/2
8	Clay and sulphur	35 13/16	3/4
9	Coal (Block)	47	12
10	Clay	48 1/16	1/4
11	Coal ("4-inch")	51 1/16	3
12	Blue band	52 1/16	1
13	Coal (Bottom) with sulphur streak up to 1/2" about 2" below top	79 9/16	27 1/2

Floor: fire clay

(Scale: 1 division = 3 inches).

Sample No.

Can No.

Lab. No.

Collector, Cady

Sept 8, 1918

Coal: Survey No. 6

Mine, Avery

Co.

St Clair

Index No.

06123f.

Q.—COAL SECTION SHEET.



PYRITE
GEOLOGICAL OCCURRENCE

See
Extra
Sheet
No.

1. Manner Pyrite occurs mainly as plates between benches. Mainly about 2" below blue band, about 4" above blue band and between block and drift coals. Some pyrite in slips at rolls
2. Size of Masses Commonly about 1/2" to 1" x 10 - 20 ? Some as thick as 2", but not many
3. Measurements to determine amount

No.	Location in mine						Total		Px3	P %	
		1	2	3	4	5	Coal	Pyrite			
1	R 8, 2nd N off 1st rt N side						About	80	1/4	3/4	1
2	R 6, ditto								1/4		1
3									1/2	1.5	1.7
4	R 14 Loop entry N side								1/3	1	1.2
5	R 8, 1 N 1 Rt N side								1/2	1.5	1.7
6	Face loop entry N side								1/3	1	1.2
7	Hog entry N side										
8	R. 22 back Hog entry	3/4	3/4	1/4	1/4			2		6	7
10	R 1 back main north	1/2	1/2	1	3/4	1/2		400	4 1/2	12.5	3.

4. Notes

Total	18
Average	2.

Percent averages probably about 1.5
Possibly not over half recoverable because of shooting

5. Samples.

Label No.	Location in mine	Analyses, etc.
C- 18 -97	Typical plate pyrite from this mine; similar to that found generally in Belleville district.	

6. Notes

Collector **Cady** Date **Sept 6 1918** Coal No. **6**

Operator **So. C C & Mg Co** No. **51**

Mine **Avery** **St Clair Co** Index No. **0612**

Y-PYRITE SHEET (1)

3f.



**PYRITE
RECOVERY**

See
Extra
Sheet
No.

- 7. Method of rejection of pyrite **Picked out at face by**
 - (1) In mine **miner**
 - (2) Per cent rejected **Possibly about 1% Difficult to**
 - (3) At tippel **tell because material buried in slate.**
 - (4) Per cent rejected
- 8. Per cent of pyrite in rejected lumps **Plate pyrite very clean**
- Some pyrite in blue band, not good, Too much dirt**
- 9. Possible daily production of pyrite **Mine output about 700 tons Believe could produce nearly 5 tons of pyrite daily. (3 to 5)**
- 0. Possibility of future production **Fairly good if proce right and can get miners interested**
- 1. Pyrite ever cleaned and shipped? **Possibly to smelter about**
 - (1) Method **20 years ago. Used mainly the material thrown out at tippel. In some mines miners apid**
 - (2) How loaded **1.50 a ton Saved in room and loaded out when car load collected**
 - (3) Consignee
 - (4) Price **F. O. B. cars**
- 2. Washing: Daily tonnage of refuse
 - (1) Maximum size
 - (2) Pyrite in refuse, per cent:
 - (3) Samples. No.
 - (4) Sulphur samples. No.
 - (5) Conditions of recovery

3. General conclusion as to pyrite recovery **Believe conditions are favorable**

Collector Cady	Date Sept 8 1918	Coal No. 6	<input type="checkbox"/>
Operator So C C & Mg Co	No. 51	Index No. 06123f	
Mine Avery	Co. St Clair		

Z PYRITE SHEET (2)