

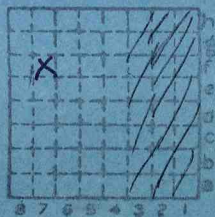


Form 180 Blue

Moweagua M.C.

Mi. # 217

49



Sec. 31

T. 14 ~~3~~

R. 2 ~~3~~

Index No.

This location is correct; Sec 31 is a narrow section

ILLINOIS COAL MINE NOTES

TOWN *Moweaqua* T. *14N* R. *2E* S. *31* W *7/4* Shelby CO.  
 COAL BED # *5* DATE *Sept 29 '08* COLLECTOR *John Udden*  
 OPERATOR *Moweaqua C. M. & Mgt Co.* MINE # *1* **0131**  
 HEAD OFFICE *Chicago* **0231**  
 CAPACITY *500 or 350* MARKETS, FRT. *Serving all min. near*  
 ENTRANCE *Shaft 625'*  
 CAGE *Home made hand dump* ENGINES *Litchfield*  
*cylinder 18x32 fire motor* DRUM *wooden 8'*  
 SCREENS *Shaker* **USED IN COOP. REPT. 1912.**

STORAGE *none* **75¢**  
 VENTILATION *Crawford McCrum* 16 *reversible* **42000 e/6 mi**  
 GAS, SOURCE *occasionally in pockets in coal*  
 COAL THICKNESS, AV. *4* MAX. *66* MIN. *60* ELE. *10* *15' above sea level*, FT.  
 SECTION LOCATED *Cross between 9th & 10th N of main W*

No.		In.	No.		In.
1	Blank shale		7	Sulphur	<i>1/4</i>
2	coal	<i>33</i>	8	coal	<i>16</i>
3	Sulphur	<i>1/2</i>	9	fire clay	
4	coal	<i>7 1/2</i>	10		
5	Sulphur	<i>1/4</i>	11		
6	coal	<i>4</i>		TAPE	

NOT SHIPPED NOT INCLUDED *4* CAN *30* SAMPLE *282*  
*Seal Eng. Co #283 tag 48*

PHYSICAL PROPERTIES BY NOS. # *8* *hardest*; dull lustre *OK*  
*brittles has greatest amount of sulphur.*  
*2, 4, 6, soft bright lustre with alternating*  
*vands in # 2 of light & dark coal Very*  
*little sulphur*

ROOF *Black sh 2' Sap rock 4" Shale gray 6'*  
 FLOOR *fire clay 3'*  
 DIP *SE 1 1/2°* CLEAT

FAULTS, ETC. *Few of horz cracks all directions*  
 MACHINES *Steel mixed size 40 rod*  
 HAULAGE *Electric 45F + NW + NE Goodman 6 ton mules*  
 CARS *Wooden 1 1/4*

DRAINAGE *dry*  
 WORKING SYSTEM *Room & pillar* **0231**  
 ENTRIES, MAIN *12* CROSS *12* ROOMS *30-35 W 185L*  
 PILLARS, MAIN *35* CROSS *30* ROOM *20* **0131**  
 DRAWN TIMBERS *main entries*

*very 5' top capping. Hardly any timber in cross*  
 Note also: Variation in coal, impurities, roof, structure. *no special details*  
 Collect records, analyses, fossils. Note land values, etc. *whenever needed*



580 to 710 0.

620' to no 5.

770' to — 44"  $\times$

920' - no 2

3'

924'6" - no 1

Charles Ahl Asst.

for Ambergers <sup>mine</sup> Mgr. Mr.

Elsam Neg des.

Bull # 8

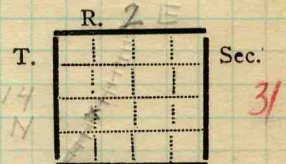


Town, *Moweaqua*  
Local Authority, *Wm Herriot*

Surface alt., ft.  
Depth to coal, *618* ft.  
Alt. top coal, ft.  
Thickness: Av. in.  
Max. in., Min. in.

Level: Auth.,  
Method,

R. R., *I. C.*



Location: authority,  
*Mine Dept*  
*Mow*  
Operator

(Show R. R.)  
Mine Name or No.

19 *21* *Moweaqua Mining & Mfg. Co. Moweaqua*

Successor to  
Date  
Succeeded by  
Date  
Succeeded by  
Date



**PRODUCTION.**

							U. S. No.
19	<i>21</i>	<i>400</i>	<i>Tons</i>				

Geol. Notes? *Yes* Coop. No. Coal secs? *3*  
Analyses No.

Examined by *Netzeband & Thurston* Ref.

Coal bed name: Local **SHIPPING MINE** Survey No. *5*  
County *Shelby* Index No. *02 31.24*  
K.—ACTIVE SHIPPING OR LOCAL COAL MINE. *duplicate*  
*County No. 49* (9019-1M-7-18)





Mine originally operated by: (1)

Date **Moweaqua Coal Mining & Manufacturing Co**  
1892

Original name or number: **#1**  
Illinois Coal Report **1892** p.

LATER OPERATORS

Date	Operator	Name or No.
2 1925	Moweaqua Coal Mining Co.	
3 1930	Moweaqua Coal Mining & Mfg. Co.	
4 1931	Moweaqua Coal Corporation	#1
5 1934	Erie Sootless Coal Co.	
6		
7		
8		
9		
10		
11		
12		
13		
14		

\* Also owners

#See ownership sheet

Railroad, Wagon, Idle, Abandoned

I.C. **SHIPPING MINE**

IDENTIFICATION

County No. **49**

Coal No.

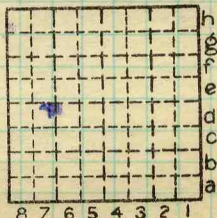


Part

Quad.

County

**Shelby**



Sec. 31

T. 14 N. 6.

R. 2 E. 6.

Index No.

0231 d7

COAL MINE OPERATOR



( Sheets )

COAL PRODUCTION

( Sheet )

Period						Tons			
Mo.	Day	Year	Mo.	Day	Year				
					1935				

#1

SUMMARIES

No.	to	No.				
1892		1935		2	397	158

Railroad, Wagon, Idle, Abandoned

IDENTIFICATION

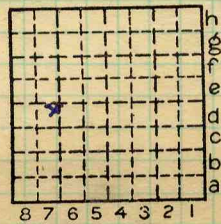
County No. *49*

Coal No.

Quad.

Part

County *Shelby*



Sec. 31

T. 14

R. 2

Index No. 0231 d7



Town, **Moweaqua**

Local Authority,

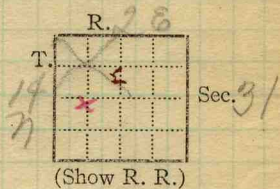
Level: Auth., **Bull 11**

Method,

R. R., **I.C.**

Location: authority, **Bull 11**

Surface alt., **635** ft.  
 Depth to coal, **620** ft.  
 Alt. top coal, **15** ft.  
 Thickness: Av. **64** in.  
 Max. in., Min. in.



Operator

Mine Name or No.

✓ 19 **Moweaqua Coal Mining & Mfg. Co.** No. 1

Successor to

Date

Succeeded by **Erie Spotless Coal Co**

Date **1936**

Succeeded by

Date

PRODUCTION.

U. S. No.

Year	Production	U. S. No.
1926	<b>Daily Cup 500 Tons</b>	
1927	<b>39 950</b>	
1928		
1931	<b>23 507</b>	
1932	<b>37 333</b>	<b>1930-#1</b>

Geol. Notes? **Yes** Coop. No.

Coal secs.?

Analyses No. **81311-2-3-4; 1868, 408**

Examined by

Ref.

Coal bed name: Local **SHIPPING MINE**

Survey No.

County **Shelby**

Index No. **0231,24**

→ K.—ACTIVE SHIPPING OR LOCAL COAL MINE.

County No. 79

ILLINOIS GEOLOGICAL SURVEY, URBANA

From: Coal Report, 1894 p. 80

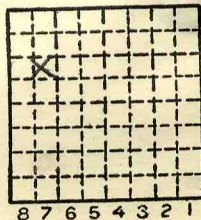
Developments. - "The Moweaqua Mining and Manufacturing Company bored a hole at the bottom of the hoisting shaft to prospect for a workable coal seam. At a depth of 38 feet below the seam then being worked the drill entered a seam 5 feet 6 inches thick. The company abandoned working the old seam and are now opening the new seam, which resembles No. 5 as it appears at Springfield."

County # 49

By.....Date.....

Quad.....Part.....

County Shelby.....



Sec. <u>31</u>	
T. <u>14</u>	N. <u>8</u>
R. <u>2</u>	E. <u>W.</u>



Assumption has been worked in this mine. No record of drilling could be found but according to Mr. Ahl the coals workable occur as follows: -

no 6 coal occurs at	580 feet + 55
no 5 " " at	620' " + 15
a 44" vein of coal at	770' "
no 2 coal occurs at	920' " - 285
limestone 3' thick	
no 1 coal occurs at	924 feet

Elevation Moweaqua 635  
629

Rutledge N.B.G. P25

Section Room 10.5. off E.

Black slate roof.  
Coal 60"

Black slate over coal averages 30"  
above slate is soapstone.

About #5 seam is another seam. reported 5-7" thick  
Is clean coal has blue band and same condition as  
Pona seam. #6

Room + Pillar

Shot off solid.

depth to #5 - 625

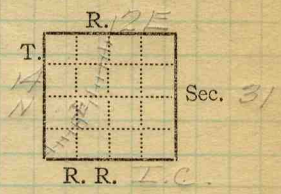
Shaft was sunk to 900' where Assumption Seam was found  
and worked awhile.



0231

0131\*

Mine Name or No., *Moneagua*  
*7 1/2* mile from *Moneagua*  
Operator, 191 *1 Moneagua Coal Mfg & Mtg Co*  
Operator, 191



Entrance, *shaft* Elev., ft.  $\left\{ \begin{array}{l} \text{above,} \\ \text{below,} \end{array} \right.$   
Depth to ~~bottom~~ coal, *618* ft. Alt.  
SURFACE DATA.

- A. Topography, *Flat* See
- B. Surficial materials. (1) Character, *Till*
- (2) Thickness, *No information* (3) Effect on mining and shaft-sinking, of former drainage lines, underground water strata, etc. *No information.*

- C. Outcrops, (1) Character, See
- (2) Structure, See
- (3) Fossil horizons, See
- Collection No.,
- (4) Evidences of subsidence, See
- D. Note collection of mine maps, drill records and shaft logs.

See drill record sheet,

E. Notes on surrounding area,

See

Coal bed name: Local, Survey No. *5*

Collector, *Netzeband*

Mine, *Moneagua*

Co. *Shelby*

Index No. *0231-24* ✓



F. Thickness of rock above bed worked,

(1) Important variations, *No information*

See

G. Note presence of strata having important effect on mining,

*Black shale*

See

(1) Position, *Above coal*

(2) Character, *Thin bedded, flaky*

(3) Persistence, *All over mine*

(4) Other workable coal beds, *No. 6 about 40' above, 6' thick, said to be very high in sulfur.*

See

H. Cap rock, *Limestone*

(1) Thickness, *2"-1"*

(2) Height above coal, *18"-36"*

See

I. Immediate roof, *Black shale*

(1) Thickness, *14"-40"* (2) Contact with coal,

*Clean & regular.*

(3) Horizontal variation,

See

J. Draw slate. (1) Thickness, *6"-12"* (2) Contacts

*Clean & regular*

(3) Persistence, *Only in patches thru out mine*

K. Coal bed: Max. *70* Min. *60* Av. *63* inches

(1) Benches, *None*

(a) Position,

(b) Persistence,

See

(2) Bedded impurities, kind, position in benches, persistence, ease of separation. *Charcoal lenses.*

(3) Irregularities in continuity of bed (due to deposition, erosion, or movement, *Horse backs*

See

(a) Effect on mining, *Trouble with miners in going thru than*

See *X1*

See

SECTION				
Ft.	In.	Name		Sym.
1		Limestone		
3	4	Black sh		
5	3	Coal		
4		Flour clay		
		Dir = 4'		

Collector, *Netzeband*

Mine, *Monegga* Co. *Shelby*

Coal: Survey No. *5*

Index No. *0231-24*

K<sub>3</sub>Room 5, 3rd W. off 15<sup>th</sup> N

An excellent horse back 30" wide is shown running from the face across to the south rib. The horseback comes up from the bottom at the face runs up to the roof and crosses over, going into the floor in the rib. Photo taken by Thurston.

:



K. (5) Physical character of coal in benches,

(a) Relative hardness, *About same hardness as Saline County coal.*

(b) Lustre,

(c) Fracture,

(d) Texture, *Laminated*

See

(6) Impurities in coal, other than bedded,

(a) Kind, *Pyrite bands*

(b) Position and persistence,

(c) Rejected, *No*

Ease of separation,

See

L. Floor: (1) Material, *Floor clay ls. below.*

(2) Thickness, *2" - 4"*

(3) Variation, *Varies in color and hardness.*

(4) Note character, condition, tendency to heave, relation to undercutting commercial value.

*Dark to medium grey, hard to soft, with many slips, plastic when wet; heaves but little; used to undercut upon; value unknown.*

See

(5) Clay sample No.

Location,

M. Stratigraphy,

(1) Fossiliferous horizons underground,

Collection No.

Location,

N. Notes on effect of deep drilling in coal mine areas.

See

Collector, *Netzeband*

Mine, *Moweaqua* Co. *Shelby*

Coal: Survey No.  *5*

Index No. *0231.24*

I<sub>3</sub>

The immediate roof is black shale from 1' to 3½'. The contact with the coal is full of rolls and is very uneven. The shale is full of slips (streken sides) around these the shale is very likely to fall and requires timbering.

Above the black shale in some places is a fossiliferous limy shale above this is a fossiliferous medium gray shale. The limy shale is absent in most places. The slips continue into the gray shale, one fall of 36' disclosed nothing above this gray shale.

Collector Thurston

Index No. 0231.24

X- 2

EXTRA NO. 2

County

Shelby



Operator, *Moweaqua Coal Mfg & Mfg Co* Date *Aug. 25, 1921*  
 Mine, *Moweaqua* Sec. *31* T. *14N* R. *2E*  
 Located, *77* miles from *Moweaqua*.  
 Location in mine, *16<sup>th</sup> 5 off Main W*

GRAPHIC SECTION		DESCRIPTION OF SECTION (AT POINT SAMPLED)	
In.	No.	No.	(Note character and thickness of roof) Inches
			<i>Black shale</i>
		<i>1</i>	<i>Coal 1 7/8</i>
		<i>2</i>	<i>Charcoal lens 1/4</i>
		<i>3</i>	<i>Coal 2 5/8</i>
		<i>4</i>	<i>Pyrite band 1/8</i>
		<i>5</i>	<i>Coal 2 1/4</i>
		<i>6</i>	<i>Pyrite band 1/8</i>
		<i>7</i>	<i>Coal 1 8/8</i>
			<i>Hard, dark grey floor clay</i>
			<i>Tap 63</i>
			(Note character and thickness of floor)
			Total thickness of coal. <i>63 3/4</i>
		Condition, <i>Dry, fresh.</i>	Time, <i>3</i> hr. <i>8</i> min. <sup><i>11:34</i></sup> <sub><i>8:26</i></sub>
		Wt. Gross, <i>24</i> lbs.	Net, <i>4</i> lbs.
		What Nos. shipped by Co.?	<i>H11</i>
		Excluded from sample: No.	<i>None</i>
		Sample represents	<i>63 3/4</i> in. tons.
		Impurities? How do they occur?	

Sample No. *T-21-28* Can No. *72* Lab. No. *81311*  
 Collector, *Thurston* Coal: Survey No. *5*   
 Mine, *Moweaqua* Co. *Shelby* Index No. *0231-24*  
 R.—COAL SAMPLE SHEET.

Operator, *Morrow Coal Mgr. Co.* Date *Aug. 25, 1921*  
 Mine, *Morrow* Sec. *31* T. *14N* R. *2E*  
 Located, *4 1/2* miles from *Morrow*  
 Location in mine, *6<sup>th</sup> E off 15<sup>th</sup> N off Main W*

GRAPHIC SECTION		DESCRIPTION OF SECTION (AT POINT SAMPLED)		
In.	No.	No.	(Note character and thickness of roof)	Inches
			<i>Black shale</i>	
			<i>1 Coal</i>	<i>17 1/4</i>
			<i>2 Charcoal</i>	
			<i>3 Coal</i>	<i>4 1/2</i>
			<i>4 Pyrite &amp; charcoal lens</i>	<i>1/4</i>
			<i>5 Coal</i>	<i>4</i>
			<i>Tap 63 1/2</i>	
			<i>Hard, medium grey floor clay</i>	
			(Note character and thickness of floor)	
			Total thickness of coal.	<i>63 1/2</i>
		Condition, <i>Dry</i>	Time, <i>2</i> hr. <i>26</i> min.	
		Wt. Gross, <i>17</i> lbs.	Net, <i>4</i> lbs.	
		What Nos. shipped by Co.?	<i>1711</i>	
		Excluded from sample: No.	<i>None</i>	
		Sample represents	<i>63 1/2</i> in.	tons.
		Impurities? How do they occur?		

Sample No. *T-21-29* Can No. *05576* Lab. No. *81312*  
 Collector, *Thurston* Coal: Survey No. *5*   
 Mine, *Morrow* Co. *Shelby* Index No. *023129*  
 R.—COAL SAMPLE SHEET.



Operator, *Moweaqua Coal Mfg & Mng. Co.* Date *Aug 25, 1921*  
 Mine, *Moweaqua* Sec. *31* T. *14N* R. *2E*  
 Location in mine, *Face of Back W.*

GRAPHIC SECTION		DESCRIPTION OF SECTION (AT POINT SAMPLED)	
In.	No.	No. (Note character and thickness of roof)	Inches
		<i>Black shale</i>	
		<i>1 Coal</i>	<i>2 7/8</i>
		<i>2 Pyrite lens</i>	<i>3/8</i>
		<i>3 Coal</i>	<i>9 1/2</i>
		<i>4 Charcoale pyrite band</i>	<i>4</i>
		<i>5 Coal</i>	<i>17 1/2</i>
		<i>6 Pyrite lens</i>	<i>4 1/8</i>
		<i>7 Coal</i>	<i>14</i>
		<i>8 Pyrite</i>	<i>1/2</i>
		<i>9 Coal</i>	<i>3 1/2</i>
		<i>Tape 69 1/4</i>	
		<i>Hard, medium to dark grey floor clay</i>	
		(Note character and thickness of floor)	
		Total thickness of coal.	<i>69 1/2</i>
		Condition, <i>Dry, fresh</i> Time, <i>1 hr. 50 min.</i>	
		Wt. Gross, <i>18</i> lbs. Net, <i>16 1/2</i> lbs.	
		What Nos. shipped by Co.?	
		Excluded from sample: No. <i>2</i>	
		Sample represents <i>68 9/16</i> in. tons.	
		Impurities? How do they occur?	

(1 division = 3 in.)

Sample No. *7-21-30* Can No. *918* Lab. No. *81313*  
 Collector, *J. H. Weston* Coal: Survey No.   
 Mine, *Moweaqua* Co. *Shelby* Index No. *0231.24*