

strip mine usually (more than 1 ft)  
augers some of the time  
started in 1960 and mined off and on  
through the '60's and in '70's (jdt 9-76)

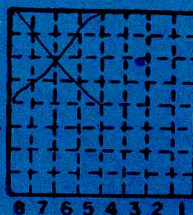
Abandoned 12-31-68

Tipple 1360'NL, 1420'EL sec 14

Lee Coal Co.

#1 Auger Mine

Vermilion County L-241



Sec. 14  
 T 19 N  
 R. 12 E  
 Index No. NW/4

Mine Index 3194

opened 3/68

U.S. GEOLOGICAL SURVEY  
WATER RESOURCES DIVISION

ILLINOIS STATE GEOLOGICAL SURVEY

Location and Elevation Data

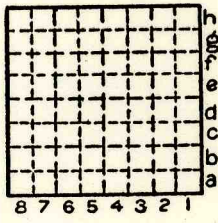
Location \_\_\_\_\_ Exact \_\_\_\_\_ Approx. \_\_\_\_\_  
Location by \_\_\_\_\_  
Date \_\_\_\_\_ Notebook No. \_\_\_\_\_ Page \_\_\_\_\_ No. \_\_\_\_\_  
Looseleaf ref. \_\_\_\_\_ Map files No. \_\_\_\_\_

Position in sec.

\_\_\_\_\_ ft. from \_\_\_\_\_ line \_\_\_\_\_

\_\_\_\_\_ ft. from \_\_\_\_\_ line \_\_\_\_\_

Other description \_\_\_\_\_



Sec. 14  
T. 19 N.   
R. 12 W.

Bed	Depth	Elev.	Thickness
<u>No. 7</u>			

Farm \_\_\_\_\_  
\_\_\_\_\_ No. \_\_\_\_\_  
Company \_\_\_\_\_  
\_\_\_\_\_ No. \_\_\_\_\_

Card by \_\_\_\_\_ Date \_\_\_\_\_

Used in \_\_\_\_\_ County No. \_\_\_\_\_

Elevation \_\_\_\_\_ ft.

Method: Level, transit, alidade, hand level, top. map.

Elev. of \_\_\_\_\_ Height of point above ground \_\_\_\_\_

Date \_\_\_\_\_ Notebook No. \_\_\_\_\_ Page \_\_\_\_\_ No. \_\_\_\_\_

Looseleaf ref. \_\_\_\_\_ Map files No. \_\_\_\_\_

Year drilled \_\_\_\_\_ Total depth \_\_\_\_\_ I. P. \_\_\_\_\_

Sample set No. \_\_\_\_\_ Electric log \_\_\_\_\_ S \_\_\_\_\_ H \_\_\_\_\_ L \_\_\_\_\_

Description (drill hole, mine, etc.) \_\_\_\_\_

Time log \_\_\_\_\_

County Vermilion Quad. Danville SW Index No. \_\_\_\_\_





( Sheets ) **COAL PRODUCTION** ( Sheet )

Period						Tons			
Mo.	Day	Year	Mo.	Day	Year				
					1968	9,717			

**SUMMARIES**

No.	to	No.				

Railroad, Wagon, Strip, Idle, Abandoned

Sec. 14

**IDENTIFICATION**

County No. \_\_\_\_\_

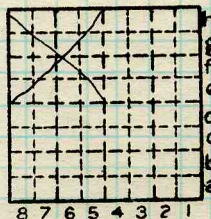
Coal No. \_\_\_\_\_

Coal Report No. L-241



Quad.

County Vermilion



T. 19 N.  
 R. 12 W.  
 Index No.

**COAL MINE—PRODUCTION**

ILLINOIS GEOLOGICAL SURVEY, URBANA

