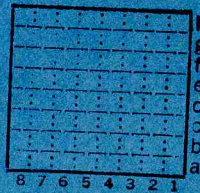




Form 180 Blue

Electric Coal Co.
 Hillary Mine No. 1

ISGS # 94
 mine index
 County No. 227



Sec. 10 FG
 T. 19 N.
 R. 12 E.
 Index No.

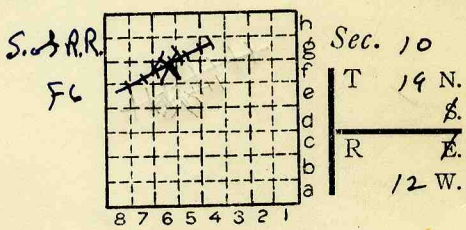


Location and Elevation Data

Location: Exact Approximate
 (Approximate only if no trace of record of original exists)
 Location by J.A.S. & K.E.C. in field July, 1948 (Estimated)
 Date + Log & Aerial Photo Notebook No. _____ Page _____
 Looseleaf ref. no microfilm map
 Map files No. _____

Shaft location: Description of Location
 1420' WL sec. 10 Position in sec., 1/4 sec., 40 acres
 1870' NL feet from North line

3750 feet from East line
3425 feet from South line
 _____ feet from West line



See log Record

S. of R.R.
 Other description: Sunk 1903
ABD. 1914
 Farm W.G. Hartsburn
 No. _____
 Company Electric Coal Co.

In Co-op Bull. #14
100' to #7 coal 5'6"-6'0"
 (verified by local ex-miner)
 Mine Notes: Udden 1908 No. Hillery Mine No. 1.
Shaft 96' Av. thk. 5'8" No. 7 County No. 227
Air shaft 108' - 3000' South of main shaft In tabulations

Elev. Top of coal 564 Elevation 645.0 ft. (654.0 in mine notes)
190w. notes 1912
 By (Topog. Estimate)

Method: Level, transit, alidade, hand level Field Estimate

Elevation of _____
 Height of point above ground _____
 Date _____ Notebook _____ P. _____
 Looseleaf ref. _____

Map files No. _____
 Description of item: (drill hole, mine, etc.) Abandoned Shaft Mines
(Plus Diamond Drill hole.)

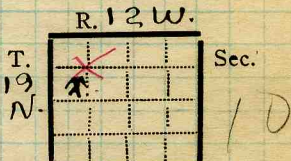
County Vermilion Quadrangle 149 Index No. 1810
 (50167-5M-2-38) 2

FG



Town, Surface alt., 640' ft.
 Local Authority, Depth to coal, 90' ft.
 Level: Auth., Alt. top coal, 550' ft.
 Method, Thickness: Av. in.
 Max. in., Min. in.

R. R.,



Location: authority, See corres. 2135-261

(Show R. R.)

Operator

Mine Name or No.

19 Electric Coal Co. No. 1

Successor to Shaft mine abd. in 1914

Date

Succeeded by

Date

Succeeded by

Date

PRODUCTION.

										U. S. No.
19										

Geol. Notes? yes Coop. No.

Coal secs?

Analyses No. 4710-1-2-3-4-5-6-7; 4721-2-

-3-4; 1844; 84226-7-8-9;

Examined by Not this mine Ref. Ship mine Sec 9

Coal bed name: Local SHIPPING MINE

Survey No.

County Vermilion

Index No. 181P27

K. ACTIVE SHIPPING OR LOCAL COAL MINE.

516



(Sheets) COAL PRODUCTION (Sheet)

Period						Tons				
Mo.	Day	Year	Mo.	Day	Year					
					1904	51	384			
					1905	105	104			
					1906	81	292			
					1907	137	682			
					1908	73	721			
					1909	207	495			
					1910	170	241			
					1911	179	358			
					1912	201	857			
					1913	116	428			
					1914	84	122			
					1915					ABD

SUMMARIES

No.	to	No.				
1904		1914	1408684			

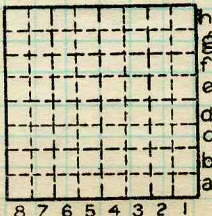
Railroad, Wagon, Strip, Idle, Abandoned
1915

SHAFTMINE

Sec. 10

IDENTIFICATION

County No. 227 Coal No. 7
 Quad. DANVILLE
 County VERMILION



T. 19 N.
~~8~~
 R. 12 W.
 Index No.

COAL MINE—PRODUCTION

ILLINOIS GEOLOGICAL SURVEY, URBANA



Mine originally operated by: (1)

Date

~~1903~~

ELECTRIC COAL CO., ELEC.

1904

Original name or number: *HILLERY MINE No.1.*
 Illinois Coal Report p.

LATER OPERATORS

Date	Operator	Name or No.
2		
3		
4		
5		
6		
7		
8		
9		
10		
11		
12		
13		
14		

*Also owners

#See ownership sheet

Railroad, Wagon, Strip, Idle, Abandoned *SHAFT MINE*
SHIPPING MINE . 1915

IDENTIFICATION

County No. 227

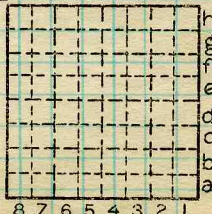
Coal No.

Coal Report No. _____

7

Quad. *DANVILLE*

County *VERMILION.*



Sec. *10*

T. *19* N. *8.*

R. *12* W. *8.*

Index No.

COAL MINE OPERATOR

1810F6

ILLINOIS COAL MINE NOTES

TOWN *Manville* T. 19 N. R. 12 W. S. 20 P. *W. Cor. 1/4 NW 1/4* *Million* CO.
 COAL BED #7 DATE *Sept 14 1908* COLLECTOR *John Udden*
 OPERATOR *Electric Coal Co.* MINE # *1* north of *EARL*
 HEAD OFFICE *Manville, Ill.* *Ill. Tract. System Big 4 & local* **2210**
 CAPACITY *700-800 tons* MARKETS, FRT. *Veederburg, Ind. C.ampaign, Urbana*
 ENTRANCE *Shaft 95' air shaft 108' deep 3000' south of main shaft*
 CAGE *Walbert self dump.* ENGINES *Manville 16x32*
First motion DRUM *Cast iron 5'*
 SCREENS *Shaker 3/4" & 1 1/4"*

STORAGE *none*

VENTILATION *Crawford & MacCrimmon 15' blades 4 1/2' x*
 GAS, SOURCE *Occasionally found in pockets in coal*
 COAL THICKNESS, AV. 68 MAX. 84 MIN. 60 ELE. FT.

SECTION LOCATED *Room #5 6th NW* about 3500' NW of shaft

No.		In.	No.		In.
1	Coal	2 1/2	7	Coal	10
2	Sulphur	1/2	8	Soft sulphur	1/4
3	Coal	3	9	Coal	11 3/4
4	Soft sulphur	1/2	10	Sulphur	3/8
5	Coal	9	11	Coal (continued)	10
6	Sulphur	3/4		TAPE 62"	

NOT SHIPPED ? NOT INCLUDED 2, 4, 6, 19 CAN 16 SAMPLE *U 260*

PHYSICAL PROPERTIES BY NOS. *Coals # 2, 4, 6 very hard, bright lustrous and very brittle; # 8, 10, 12, 14 black, dull lustrous and rather soft; these coals when shot break up rather badly into small pieces.*

ROOF *Black shale 0-3'; gray shale 6'+*
 FLOOR *Fire clay 4'-5' Coal 8'-9'; Shale 4'*
 DIP *SW 6"-100 feet* CLEAT *not well defined*
 FAULTS, ETC. *Numerous horsebacks, rolls, & sulphur balls in roof*
 MACHINES *Hand mined. Shot off solid.*
 HAULAGE *Roof haulage in main entry, secondary miles. Robert Holmes & Bros automatic carts CARS 1-1/2 ton wooden*

DRAINAGE *Almost dry except at bottom.*
 WORKING SYSTEM *Room & pillar*
 ENTRIES, MAIN 6' CROSS 6' ROOMS 21'
 PILLARS, MAIN 14' CROSS 13' ROOM 9'
 DRAWN *At times when roof permits* TIMBERS *Placed every 2'-3' with cross bars. In entries pillars placed every 1 1/2'*
~~2210~~
1810

Note also: Variation in coal, impurities, roof, structure.

Collect records, analyses, fossils. Note land values, etc.

COUNTY **54**

COUNTY

- | | | |
|----|-------------|------|
| 12 | mother coal | 1/4" |
| 13 | coal | 11" |
| 14 | Clod | 3" |
| 15 | Black shale | 6" |
| 16 | gray shale | 3' |

2210

W. B. Reid, mine mgr Bull #8x
J. C. Anderson, Supt., 604 Warrington ave
Hamville, Illinois

COUNTY

~~2210~~

1810



COAL MINE NOTES.
CONTINUED.

OPERATOR *Electric Coal Co*

MINE *Electric*

ENTRANCE *Shaft.*

NAME OF COAL BED

ELEVATION *654*

THICKNESS OF COAL

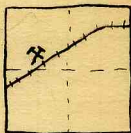
DEPTH TO FLOOR *95* MAX.

MIN.

AV.

ALTITUDE OF COAL *559 - Top 564* (See log record.)

LOCATION OF SECTION *8. East. south. Room 20.*



No. SECTION.

No.	SECTION.	In.
1	<i>Coal</i>	<i>60 1/2</i>
2	<i>Boney, shale</i>	<i>1/2</i>
3	<i>Coal</i>	<i>7</i>
4		
5		
6		
7		
8		
9		
10		
11		
12		
Tape		Total

SAMPLE No. *80*

CAN No.

CONDITION

GROSS WEIGHT

TIME EXPOSED

NOT SHIPPED

NOT INCLUDED *2*

SECTION



PHYSICAL PROPERTIES BY NUMBERS

*Abandoned in 1914
See Corres. 2135-261*

ROOF *Light gray shale.*

FLOOR *Rather soft fire clay.*

DIP

FAULTS, ETC.

GAS

COLLECTOR *Moses*

REFERENCE *N.B.N.P.T*

DATE

(2210)

1810

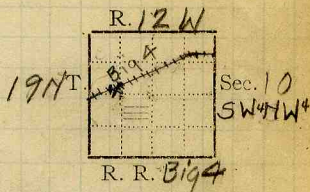
COUNTS

5th



COAL MINING INVESTIGATIONS
COOPERATIVE AGREEMENT

Mine Name or No., *Electric*
4 1/2 mile *West* from *Danville*.
Operator, 191



Operator, 1912 *Electric Coal Co*

Entrance, *Shaft* Elev. *Same* ft. $\left\{ \begin{array}{l} \text{above, } 654' \\ \text{below, as } \textit{Electric R.R. at stop.} \end{array} \right.$
Depth to bottom coal, *95'* ft. Alt.

SURFACE DATA.

- A. Topography *Rolling; Creek Valley West, small hill North.* See
- B. Surficial materials, (1) Character *Glacial Drift.*

Banks of stream covered, so character could not be seen.

- (2) Thickness, *about 40'* (3) Effect on mining and shaft-sinking, of former drainage lines, underground water strata, etc.

Former stream channels, cut down to within 10' of coal. Where rooms strike this roof falls and lets in sand, and much water. water sometimes drowns out entries. Rock over coal at these point 10' thick and cannot be keep up in room; entries however keep up. Sand from rooms flows out into entries and fill them. The production of water by the See Sheet #1

- C. Outcrops, (1) Character, See
- (2) Structure, See
- (3) Fossil horizons See
- Collection No.,
- (4) Evidences of subsidence, See
- D. Note collection of mine maps, drill records and shaft logs.

See drill record sheet.

- E. Notes on surrounding area,

Rock strata over coal thin under creek bed. Only entries driven under the creek, no rooms turned until it is passed.

See

Coal bed name: Local, *Danville, No 7* Survey # *7*

Collector, *KD White* State No. **1810**

Mine, *Electric* Co. *Yermlion* Co-op. No. *94*

L.—SURFACE SHEET (Geol.) COUNTY NO. **511**



UNDERGROUND DATA.

F. Thickness of rock above bed worked, *40' to 50' variable in thickness.*

(1) Important variations,

Character about same over mine.

See

G. Note presence of strata having important effect on mining.

Water bearing Bed 6' thick

See Sheet #1

(1) Position, *about 30' below surface*

(2) Character, *Quick Sand, in hard pan.*

(3) Persistence, *encountered in 2 shafts 2500' apart.*

(4) Other workable coal beds, *None. see log in files.*

See

H. Cap rock, *Gray shale*

(1) Thickness, *40' to 50'.*

(2) Height above coal, *0" to 24"*

See Sheet #1

I. Immediate roof *Black shale when thick enough*

(1) Thickness, *1'-2'* (2) Contact with coal, *✓*

(3) Horizontal variation,

Lenticular, giving way to cap rock See

J. Draw slate. (1) Thickness, (2) Contacts

Black carbonaceous shale. 0'-24" with Coal + Cap rock

(3) Persistence

Over most of mine

See, Sheet #1

K. Coal bed: Max. *6'-6"* Min. *4'* Av. *5'-6"* inches

(1) Benches, *2*

(a) Position, *top, from roof to clay band*
Lower, Clay Band to floor 6" to 8" thick.

(b) Persistence,

Over entire mine.

See

(2) Bedded impurities, kind, position in benches, persistence, ease of separation.

Dirt band varies from a knife edge to 2" in thickness. when thick enough discarded contains considerable sulphur. Separates fairly easily from coal. Occurs over entire mine. Varies from 6" to 10" from bottom See Sheet 1.

(3) Irregularities in continuity of bed (due to deposition, erosion, or movement).

Roof rolls considerably, floor slightly.

(a) Effect on mining, *Considerable.*

See sheets

See Sheet #1

SECTION				
Ft.	In.	Name	Index	Sym.
8'	0	Surface	B	
30'	0	Hard Pan	B	
7'	0	Shale	H	
5'	0	Coal	K	
5'	0	Clay	L	
7'	0	Sh. Shale		
4'	0	Hard Rock		
3'	0	Shale		
4'	6	Sh. Shale		
2'	0	Rock		
47'	0	Blue Shale		

Collector, *KD White*

Coal, #7

State No.

1810

Mine, *Electric*

Co. *Vermilion*

Co-op. No. *94*
COUNTY No. *57*



UNDERGROUND DATA (cont'd.)

K. (5) Physical character of coal in benches,

(a) Relative hardness, *Top bench harder.*(b) Lustre, *Top Bench bright, Lower less.*(c) Fracture, *Irregular, to blocky.*(d) Texture, *Band layer of fatty and mother of coal* See Sheet #2

(6) Impurities in coal, other than bedded,

(a) Kind, *Sulphur balls and lenses.*

(b) Position and persistence,

Occure from top to bottom over entire mine.(c) Rejected, *Sulphur balls and lenses*Ease of separation,
hard to separate.

See

L. Floor: (1) Material *Fire Clay.*(2) Thickness *5' to 6'*

(3) Variation

Fairly Constant, below clay 12" bed of coal.

(4) Note character, condition, tendency to heave, relation to undercutting commercial value.

*Top 6" of clay heaves badly, the rest is hard and solid.**Roof that falls loaded out or gobed to keep the entry sufficient height. Floor formally taken up but little is done so now.*

See

(5) Clay sample No.

Location,

M. Stratigraphy

(1) Fossiliferous horizons underground,

Collection No.

Location,

N. Notes on effect of deep drilling in coal mine areas.

See

Collector, *K.D. White*

Coal #7

State No. *1810*Mine, *Electric*Co. *Vermilion*Co-op. No. *94*



INDEX

- G Considerable difficulty was experienced in getting thru it.
Bed when first struck filled a sump 6'x10'x4' in 2 hours, in 1908, production steadily declined. until now it makes very little water.
Both shafts had trouble with it.
- J Shale very carbonaceous, with considerable sulphur. Shale slacks readily on contact with air, and becomes pulvry, and is encrusted with a white coat of sulphur. General thickness 2" to 4" but in places reaches 2' where it stands up and forms the roof, while in others it is gone, save for a knife edge and the gray shale cap rock forms the top.
- K₂ Beside the sulphurous dirt band, discontinuous bands of sulphur, and band of clay are scattered thru bed. Some hold their position for considerable distance. One sulphur band $\frac{1}{2}$ " to $\frac{1}{2}$ " thick held constant for over 300 feet.
- B₃ sand steadily declines until it finally can be controlled.
Entries and Rooms that let in sand.
Rooms 4+5, 14th South West.
" 5, 17th North West
Room 24 or 25 6th North.
- H A soft, fissile, gray shale, commonly called soapstone, containing some sulphur balls which are generally small.
- J Sulphur in draw; generally in the form of balls and lenses.
- K₃ In Room 5 on Back South entry the coal gradually thickens up then a step of 20" occurs in the floor, and the coal again reaches normal thickness. This slip bears N50W.
sketch is only approximately correct.

Collector

K. J. White

Coal #70

State No.

1810

Mine

Electric

Co.

Vermilion

Co-op No.

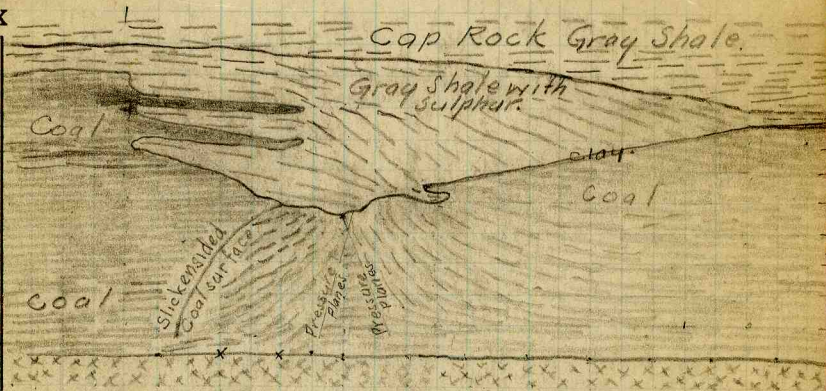
94

X.—EXTRA SHEET No. 1



INDEX

K3



Sketch of section of roll showing in rib of Entry 4th South West.

The roll bears S40°W.
 The cleat of the coal near the roll is N20°W or nearly at right angles.
 The coal along the pressure planes is slickensided.
 The gray shale filling the roll is also slickensided and the bedding planes turned at angle.
 Rolls occur over entire mine, near face of 6th South West. a roll parallels entry for 100' the contact of the shale and coal is slickensided.

Section of Coal in Room 16 Main south.

- 1 Coal bright blocky, Cleat fairly well developed. Calcite and sulphur plates occur along cleavage planes. Sulphur lenses and balls scattered thru out bed, a large number present. Alternate layers of Tarry and mother of coal give it a banded appearance. Mother of coal thin, tarry layers from 1/8" to 1/2" thick. 5'-0"
 - 2 Clay parting containing more or less sulphur in different parts of the mine. 0'-1"
 - 3 Lower bench about same as top only dirtier 0'-10"
- Total 5'-11"

Cleat varies from N40°W to N65°W.

Sulphur in bed is separated from coal, and sold

Collector K D White Coal # 7 State No. **1810**
 Mine Electric Co. Vermilion Co-op No. 94
 X.—EXTRA SHEET No. # 2



COAL MINING INVESTIGATION

COOPERATIVE AGREEMENT

Operator, Electric Coal Co. Date, 3/7, 1912
 Mine, Electric Located 5 miles* W from † Danville
 Location in mine, 20 North Central (20 N. off Main W)
 Total (vertical) depth from surface at point of sampling, 95 ft.

In describing the beds and character of the members, note any member that is rejected by the miner. Note all clay and sulphur partings, whatever their thickness. Exclude from sample all clay and sulphur partings $\frac{3}{8}$ inch thick or over (and even those of less thickness if they are rejected at mine or tippel).

SECTION OF BED AT POINT SAMPLED.

No.	DESCRIPTION.	FEET.	INCHES.
1	HARD BRIGHT COAL	3	3 1/2
X 2	BONY		1/2
3	HARD BRIGHT COAL	8	8
X 4	SULPHUR & BONY STREAMS		1 3/4
5	HARD BRIGHT COAL		5 1/2
X 6	SULPHUR		1
7	HARD BRIGHT COAL		10
X 8	SULPHUR		1 1/4
9	HARD BRIGHT COAL		1 3/4
10			
11			
12			
13			
14			
15			
16			
17			
TOTAL		69 1/2	97 1/4

69.25 4.50 16.5
 41550 485 3450

Is coal wet or dry? wet
 Time exposed, _____ hours, _____ minutes.
 Weight, 30 gross, _____ net.
 What are the impurities, and how do they occur?

What are shipped? 1 3 5 7 9 6 8
 What are excluded from the sample? 2 4

Town, Danville Mine, Electric Coal bed, _____
 *Direction (N., NE., etc.) †Nearest railway station.
 Co. Wilmington
 No. 94 1810

I.—COAL SAMPLE SHEET. Sampler, J. J. O'Connell
 SAMPLE NO. 120 CAN NO. (a) 22423
#4711 (b) 22413
(c) 78
(d) 60 Urbana



COAL MINING INVESTIGATION

COOPERATIVE AGREEMENT

Operator, *Electric Coal Co* Date, *3/7*, 191 *2*
 Mine, *Electric* Located *5* miles* *W* from † *Danville Ill*
 Location in mine, *Face 20 South Entry*
 Total (vertical) depth from surface at point of sampling, *95* ft.

In describing the beds and character of the members, note any member that is rejected by the miner. Note all clay and sulphur partings, whatever their thickness. Exclude from sample all clay and sulphur partings $\frac{3}{8}$ inch thick or over (and even those of less thickness if they are rejected at mine or tippel).

SECTION OF BED AT POINT SAMPLED.

No.	DESCRIPTION.	FEET.	INCHES.
1	<i>Hand-bought coal.</i>	<i>5</i>	<i>6 1/2</i>
2			
3			
4			
5			
6			
7			
8			
9			
10			
11			
12			
13			
14			
15			
16			
17	<i>Face 20 of mine</i>	<i>5</i>	<i>6</i>
	TOTAL,		

Is coal wet or dry?
 Time exposed, _____ hours, _____ minutes.
 Weight, *30* gross, _____ net.
 What are the impurities, and how do they occur?

What are shipped? *2*
 What are excluded from the sample? *nothing*

*Direction (N., NE., etc.). †Nearest railway station. *406*

Town, *Danville* Mine, *Electric* Co. *Vermilion*
 No. *94*

I.—COAL SAMPLE SHEET. Sampler. *Danville* 1810

SAMPLE NO. *12* JAN NO. *(a) 22475 094*
(b) 22482
#4713 *(c) 22501* *Valona*



COAL MINING INVESTIGATION

COOPERATIVE AGREEMENT

Operator, *Electric Coal Co* Date, *Mar 6* 191*2*
 Mine, *Electric* Located *3* miles* *W* from *Danville*
 Location in mine, *Face 15 N. W.*
 Total (vertical) depth from surface at point of sampling, _____ ft.

In describing the beds and character of the members, note any member that is rejected by the miner. Note all clay and sulphur partings, whatever their thickness. Exclude from sample all clay and sulphur partings $\frac{3}{8}$ inch thick or over (and even those of less thickness if they are rejected at mine or tipple).

SECTION OF BED AT POINT SAMPLED.

No.	DESCRIPTION.	FEET.	INCHES.
1	<i>Gray soapstone</i>	<i>40</i>	
2	<i>Hard bright</i>	<i>4</i>	
X 3	<i>Sulphur rock</i>		<i>6 3/4</i>
4	<i>Hard bright coal</i>		<i>5 3/4</i>
X 5	<i>Sulphur rock</i>		<i>1 1/6</i>
6	<i>Hard black coal</i>		<i>6</i>
7	<i>fine clay</i>		
8			
9			
10			
11			
12			
13			
14			
15			
16			
17	<i>Electric Mine</i> TOTAL,	<i>5</i>	<i>9</i>

*69 | 2.5 - 3.6
 2.07

 430
 3
 207*

*69
 6 1/2*

Is coal ~~wet~~ or dry?
 Time exposed, *1 hr.* hours, _____ minutes.
 Weight, *3.2* gross, _____ net.
 What are the impurities, and how do they occur?

What are shipped? *1, 2, 4 (2, 4, 6)?*
 What are excluded from the sample? *3, 5*

Coal bed, *Danville (No 7)*

*Direction (N., NE., etc.). †Nearest railway station.

Town, *Danville* Mine, *Electric* Co. *Vermilion*
 No. *94*

I.—COAL SAMPLE SHEET. Sampler.

SAMPLE NO. *12A* NO. *4716*
 (a) *21277 Pgh*
 (b) *21271*
 (c) *5312*
 (d) *507?*

1810



COAL MINING INVESTIGATION

COOPERATIVE AGREEMENT

Operator, *Electric Coal Co* Date, *May 9*, 191*2*
 Mine, *Electric* Located *5* miles* from *Danville*
 Location in mine, *15 North room 15*
 Total (vertical) depth from surface at point of sampling, *95* ft.

In describing the beds and character of the members, note any member that is rejected by the miner. Note all clay and sulphur partings, whatever their thickness. Exclude from sample all clay and sulphur partings $\frac{3}{8}$ inch thick or over (and even those of less thickness if they are rejected at mine or tipple).

SECTION OF BED AT POINT SAMPLED.

No.	DESCRIPTION.	FEET.	INCHES.
1	<i>Gray shale</i>	<i>40</i>	
2	<i>Hard bright coal</i>	<i>1</i>	
X 3	<i>sulphur rock</i>		<i>9</i>
4	<i>Hard bright coal</i>		<i>1 1/2</i>
X 5	<i>sulphur rock</i>		<i>1/2</i>
6	<i>Hard bright coal</i>	<i>2</i>	<i>4 1/2</i>
X 7	<i>Clay band</i>		<i>1 1/2</i>
8	<i>Hard bright coal</i>		<i>9 5</i>
9	<i>Fire clay</i>		
10	<i>1 mile from bot</i>		
11			
12			
13			
14			
15			
16			
17			
<i>Electric's 15th R 15</i>		<i>5</i>	<i>9</i>
		TOTAL,	

Is coal ~~wet~~ or dry?
 Time exposed, *1 hr* hours, minutes.
 Weight, *33* gross, net.
 What are the impurities, and how do they occur?

What are shipped? *3 5 7*
 What are excluded from the sample? *2 4 6 8*
 *Direction (N., NE., etc.). †Nearest railway station.

Town, *Danville* Mine, *Electric* Co. *Vermonian*
 No. *94*

I.—COAL SAMPLE SHEET. Sampler. *1810*

SAMPLE NO *120* CAN NO. *(a) 21278 Pyh*
(b) 21356 "
(c) 21440 Urbane
(d) 21236 "



COAL MINING INVESTIGATION

COOPERATIVE AGREEMENT

Operator, *Electric Coal Co.*, Date, *3/7/22*, 1912
 Mine *Electric*, Located *3* miles* *W* from † *Danville, Ill.*
 Location in mine, *Main South off Main South*
 Total (vertical) depth from surface at point of sampling, *95* ft.

In describing the beds and character of the members, note any member that is rejected by the miner. Note all clay and sulphur partings, whatever their thickness. Exclude from sample all clay and sulphur partings $\frac{3}{8}$ inch thick or over (and even those of less thickness if they are rejected at mine or tipple).

SECTION OF BED AT POINT SAMPLED.

No.	DESCRIPTION.	FEET.	INCHES.
X 1	<i>Coal bright</i>	<i>5</i>	<i>1</i>
2	<i>Clay Band</i>		<i>1</i> <i>1/2</i>
X 3	<i>Coal bright</i>		<i>10</i>
4			
5			
6			
7			
8			
9			
10			
11			
12			
13			
14			
15			
16	<i>Main South over</i>		
17	<i>Face of Main South</i>	<i>5</i>	<i>11</i>
	TOTAL,		

71.501
71
69

Is coal ~~wet~~ or dry? *Dry*
 Time exposed, *29* hours, minutes.
 Weight, *29* lb gross, net.
 What are the impurities, and how do they occur?

What are shipped? *1 3*
 What are excluded from the sample? *2*

*Direction (N., NE., etc.). †Nearest railway station. Coal bed, *Danville (No 7)*

Town, *Danville* Mine, *Electric* Co. *Vernilion*
 No. *94*

I.—COAL SAMPLE SHEET. Sampler.

SAMPLE NO *12* CAN NO. *(a) 20010 094*
(b) 22605
#4722 (a) 73 Urbana
(b) 19
1810



COAL MINING INVESTIGATION

COOPERATIVE AGREEMENT

Operator, *Electric Coal Co.* Date, *3/8*, 191*2*
 Mine, *Electric* Located *5* miles* *W* from *Danville*
 Location in mine, *Main South entry*
 Total (vertical) depth from surface at point of sampling, *95* ft.

In describing the beds and character of the members, note any member that is rejected by the miner. Note all clay and sulphur partings, whatever their thickness. Exclude from sample all clay and sulphur partings $\frac{3}{8}$ inch thick or over (and even those of less thickness if they are rejected at mine or tippie).

SECTION OF BED AT POINT SAMPLED.

No.	DESCRIPTION.	FEET.	INCHES.
1	<i>Coal Clean</i>	<i>5</i>	
X 2	<i>sulphur rock</i>		<i>1</i>
3	<i>Coal</i>		<i>11</i>
4			
5			
6			
7			
8			
9			
10			
11			
12			
13			
14			
15			
16			
17	<i>Main South entry</i>		
	TOTAL,	<i>6</i>	

72) $\frac{1.00}{.72} = \frac{280}{280}$

Is coal ~~wet~~ or dry?
 Time exposed, _____ hours, _____ minutes.
 Weight, *34* gross, _____ net.
 What are the impurities, and how do they occur?

What are shipped? *1 3*
 What are excluded from the sample? *2*

Coal bed, *Sub B 7*
 *Direction (N., NE., etc.). †Nearest railway station.
 Town, *Danville* Mine, *Electric* Co. *Vermilion*
 No. *94*

I.—COAL SAMPLE SHEET. Sampler, *Dr. Webb*
 SAMPLE NO. *12* CAN NO. *(a) 22629 094*
(a) 10
(b) 28 *Urbana*
(c) 11

1810