



Form 180

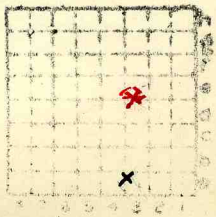
Proper location shown in red from field  
location by K.E. Clegg } 7-23-59  
R.L. Berger }

MI 2747

Bliss Coal Co.

Co # 26

L-2



Sec 27

T. 20

R. 3

Index Map





Mine originally operated by: (1)

Bliss Coal Co

Date 1936

Original name or number: Illinois Coal Report p.

LATER OPERATORS

Date	Operator	Name or No.
2		
3		
4		
5		
6		
7		
8		
9		
10		
11		
12		
13		
14		

drill: 262' } 450  
6'0" }

\* Also owners #See ownership sheet

Railroad, Wagon, Idle, Abandoned

SHIPPING MINE IDENTIFICATION

County No.

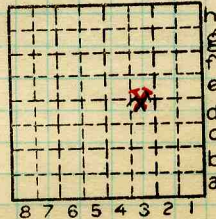
Coal No.

Quad.



Part

County Logan



Sec. 27

T. 20 N. 5

R. 3 W. 3

Index No.

0627

COAL MINE OPERATOR





Location and Elevation Data

Location: Exact Approximate  
(Approximate only if no trace of record of original exists)

Location by Log in Mine records

Date ..... Notebook No. .... Page .....

Looseleaf ref. ....

Map files No. ....

Description of Location

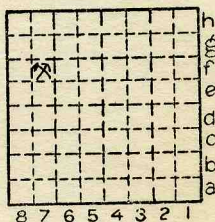
Position in sec., 1/4 sec., 40 acres

..... feet from North line

..... feet from East line

..... feet from South line

..... feet from West line



Sec. 27

T 20N.

~~S~~

R ~~E~~

3W.

Other description: .....

Farm .....

No. ....

Company Bless Mine

No. ....

County No. 13

Elevation 555 ft.

By .....

Method: Level, transit, alidade, hand level T

Elevation of .....

Height of point above ground .....

Date ..... Notebook ..... P. ....

Looseleaf ref. ....

Map files No. ....

Description of item: (drill hole, mine, etc.) Cose

County Legan Quadrangle 142 Index No. 0627, Fry