

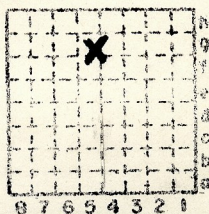
Field notes issue a
"Oakland mine" at T1N, R8W sec 705
w. elev. of 475.7, Depth to coal
at 170 ft, and Altitude of 405 (sic)
Oakland is mine index 3500
PJD

CC Co. of St. Louis } 3499
→ mine

Lenz Coal
+ Mining Co.

Co. # 834

R F



Sec. 7
T. 1 N.
R. 8 W.
Index No.

Mine Index

Mine Index 3499



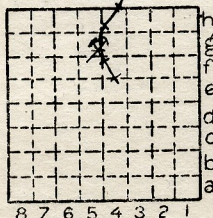
Location and Elevation Data

Location: Exact Approximate
 (Approximate only if no trace of record of original exists)
 Location by Co. Map
 Date..... Notebook No..... Page.....
 Looseleaf ref.....
 Map files No. 13-87-6

Description of Location

Position in sec., 1/4 sec., 40 acres

1280 feet from North line
25 feet W. of E from East line
 feet from South line
 feet from West line
SE NE NW



Sec. 7
 T 1 N.
 S
 R E.
 8 W.

Other description: (1900 Coal Rept.)
125' to 7' Coal
Elev. 375'

Farm.....
 No.....
 Company Lenny ~~Mine~~
Coal & Mining Co.
 No.....
 County No. 834

Elevation 500 ft.
 By 515 E.T.M.

Method: Level, transit, alidade, hand level

TM

Elevation of.....
 Height of point above ground.....
 Date..... Notebook..... P.....
 Looseleaf ref.....

Map files No. 13-87-6
 Description of item: (drill hole, mine, etc.) Ab'd

1887?

County St. Clair Quadrangle 225 Index No. 070795
 (A4242-5M-8-39) 2

