



Form 180

R. F

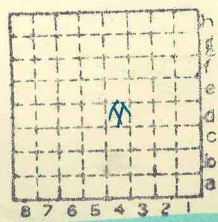
HERRIN

St. Louis O Fallon Co.

#1

Mine Index 443

200



Sec. 32

T. 2 N.

R. 8 E.

Index No.

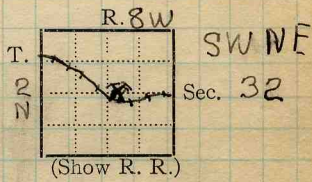
Mine Index



Town, East St. Louis *515.1* Surface alt., *510* (Est.) ft.
 Local Authority, *127.0* Depth to coal, *127* ft.
WBR-(1930) *388.1* Alt. top coal, *388* 368 ft.
 Level: Auth., Bull. 8, p 247 #31 Thickness: Av. *74* in.
 Bull. 11. C.M.I. p. 156 Max. in., Min. in.
 Method, *Planetable*

505 (Cad's Map)

R. R., *St. Louis*



Location: authority, Coal Mine Notes
 Cad's Map.
U.B.R. (1930)
 Operator

Mine Name or No.

1916. *St Louis + O'Fallon Coal Co. #1*
2927 So. Broadway, St Louis Mo.

Successor to
 Date
 Succeeded by
 Date
 Succeeded by
 Date

Abd

Qo

PRODUCTION.

							U. S. No.
<i>1926</i>	<i>Daily Cap.</i>	<i>1500 T</i>					
<i>1927</i>	<i>65</i>	<i>615</i>					
<i>1928</i>							

Geol. Notes? *Yes* Coop. No. *10* Coal secs? *No*
 Analyses No. *153, U.S. 1095, U.S. 1261, U.S. 1152*
U.S. 1096, *GEN'L COAL REPT. 200*
 Examined by _____ Ref. _____

Coal bed name: Local *SHIPPING MINE* Survey No. *6*
 County *St. Clair* Index No. *0332.42*

K.—ACTIVE SHIPPING OR LOCAL COAL MINE. *Abd*



LOCATION AND ELEVATION

Location: N side ST L & O F R. R.
side R. R.
side Highway No.

on top. map 225 d Location sheet 13-87-44b

Elevation: Method, 1. Est. () ft.
2. Inst. (kind Plane table) 515.1 ft.

By W.B. Roe 10-6-30 Data sheet

DEPTH

Authority To coal ft.
Authority Rail to rail ft.
Top of coal above rail. (Est. Rule) ft.
To coal ft.

ALTITUDE OF TOP OF COAL

By estimated data ft.
By instrumental data ft.

Thickness

Max. in. Min. in. Aver. in.

GEOLOGICAL DATA

Mine notes, date

Coop No. Pyr. inv. Coal Ash inv.

CHEMICAL DATA

Analyses Face U. I. B. M. 1095, 1096 Others
Car U. I. B. M. Others
Org. Sulf U. I. B. M. Others
Ash fusion U. I. B. M. Others
Ash anal. U. I. B. M. Others
U. I. B. M. Others

Classification

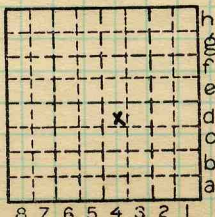
Misc. tests: Coking. U.S.P.P 40: 1332 Cleaning Boiler

Published descriptions:— U.S Bull (G.Survey) 438 pp. 25-30

Railroad, Wagon, Idle, Abandoned

IDENTIFICATION

County No. 200 Coal No. 6
Quad. French Village Part 6
County ST Clair



Sec. 32

T. 2 N.
R. 8 W.
Index No.

0332 4d

COAL MINE LOCATION AND DATA

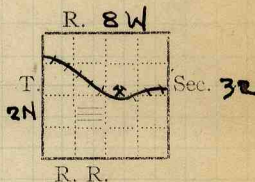
Abd



COAL MINING INVESTIGATIONS
COOPERATIVE AGREEMENT

Mine Name or No., #1
mile from

Operator, 191 St Louis + O Fallon Coal Co.



Operator, 191

Entrance,

Elev., 505 (Cady's N.B. 00) ft. { above,
510 (Est) ft. { below,

Depth to bottom coal,

ft. Alt. + 377 365 (Cady)

SURFACE DATA.

COUNTY

See Bull 8, p247 # 31

A. Topography

B. Surficial materials, (1) Character

(2) Thickness, (3) Effect on mining and shaft-sinking, of former drainage lines, underground water strata, etc.

C. Outcrops, (1) Character,

See

(2) Structure,

See

(3) Fossil horizons

See

Collection No.,

See

(4) Evidences of subsidence,

See

D. Note collection of mine maps, drill records and shaft logs.

See drill record sheet.

E. Notes on surrounding area,

GEN'L COAL REPT. 200

See

Coal bed name: Local,

Survey

Collector,

State No.

Mine, #1

Co.

Co-op. No.

0332 Ad

L.—SURFACE SHEET (Geol.)



Symbol Description Inches
(1 division=3 in.) *USGMB Ball 22 p 505*

O'FALLON. No. 1 MINE.

Sample.—Bituminous coal; Illinois field; (Illinois No. 1) analyses Nos. 1095, 1096 (p. 89).

Mine.—No. 1 (Nigger Hollow); Belleville district; a shaft mine $5\frac{1}{2}$ miles southwest of O'Fallon, on a private railroad connecting the mine with East St. Louis.

Coal bed.—Herrin coal (Belleville, No. 6) of the United States Geological Survey, termed locally the Belleville. Carboniferous age, Carbondale formation. Thickness, fairly uniform, averaging over 6 feet. At most of the large mines in the district, the cover is 100 to 200 feet. At the mine the shaft is 140 feet deep.

The bed was measured and sampled at two points by M. R. Campbell, on September 13, 1904, as described below:

Sections of coal bed in No. 1 mine, $5\frac{1}{2}$ miles northwest of O'Fallon.

Section	A	B
Laboratory No.	1095	1096
	<i>Ft. in.</i>	<i>Ft. in.</i>
Coal	1 5 $\frac{1}{2}$	0 11 $\frac{1}{2}$
Sulphur knife edge	0 9 $\frac{1}{2}$	0 4 $\frac{1}{2}$
Coal	0 7 $\frac{1}{2}$	0 5 $\frac{1}{2}$
Sulphur knife edge	0	0
Coal	1 1 $\frac{1}{2}$	0 5
Shale ^a	0 4	0 3
Coal	0 1	0 3
Shale ^a	1 10	0 1
Coal	6 3 $\frac{1}{2}$	6 10 $\frac{1}{2}$
Coal	6 1 $\frac{1}{2}$	6 8 $\frac{1}{2}$
Thickness of bed		
Thickness of coal		

^a Not included in sample.

Section A (sample 1095) was measured at a point 1,200 feet north of the shaft.

Section B (sample 1096) was measured at a point 1,200 feet south of the shaft.

Notes.—In 1904 the lump and nut coal was sold for locomotive fuel to various railroads entering East St. Louis, and the slack, that which passed through a 1-inch screen, found a ready market at electric power houses.

The output of the mine in 1904 was 1,500 tons per day.

For results of tests of this coal, see mention of specific tests as follows—steaming tests: U. S. Geol. Survey Prof. Paper 48, p. 425; Bull. 261, p. 80; Bureau of Mines Bull. 23, p. 59; briquetting tests: U. S. Geol. Survey Prof. Paper 48, p. 1437; Bull. 261, p. 153; coking tests: U. S. Geol. Survey Prof. Paper 48, p. 1332; Bull. 261, p. 122.

For chemical analyses see part I of this bulletin, p. 89; also U. S. Geol. Survey Prof. Paper 48, p. 206; Bull. 261, p. 36.

For geologic relations see U. S. Geol. Survey Bull. 438, pp. 25-30.

Collector.

Mine. #1

Co. *St Clair*

Coal: Survey No. 6

Index No.

0332.4

Q.—COAL SECTION SHEET.

Bigger Hollow
(St. Louis #O'Fellows C.C.)

Notes by Rolf W. Roley

St. Clair County

2N-8W

To all practical purposes a rock up in
some local areas where slate comes in
and thickness up to about 5 feet -

Pictures of loading end of elevating
conveyor at transfer station.

: no other observations noted about any thing
that might be deemed as unusual.



Operator, *St. L. O'Fallon Coal Co 0817* Date *Sept 13, '04*
 Mine, *No 1 Niggers Hollow* Sec. *T.* R. *R.*
 Located, *5 1/2* miles from *St. L. O'Fallon*, *branch con. with main line S. 1/4*
 Location in mine, *1200 ft S 17th shaft*

GRAPHIC SECTION DESCRIPTION OF SECTION (AT POINT SAMPLED)

In.	No.	No. (Note character and thickness of roof)	Inches
	1	Coal 11 1/2	11 1/2
0	2	Sulphur knife edge	
	3	Coal 16	4 1/2
12	4	Sulphur knife edge	
	5	Coal 21 1/2	5 1/2
24 1/2	6	Shale	
	7	Bone 22	1/2
36	8	Coal 27	5
	9	Sulphur knife edge	
48	10	Shale 27 1/2	1/2
	11	Coal 53 1/2	26
60	12	Shale	
	13	Coal 56 1/2	3
72	14	Coal	
	15	Shale 57 1/2	1
84	16	Coal 82 1/2	25

(Note character and thickness of floor)

Total thickness of coal.

82 1/2

Condition, Time, hr. min.
 Wt. Gross, lbs. Net, lbs.

What Nos. shipped by Co.?

Excluded from sample: No. *6, 7, 10, 12, 15*
 Sample represents *80* in. tons.

Impurities? How do they occur?

Bulletin 22 p. 505

Sample No. Can No. Lab. No. *B.M. 1096*

Collector, *M. R. Campbell* Coal: Survey No.
 Mine, *St. Clair* Index No. *03 344*



Operator, *St. Louis & O'Fallon Coal Co.* Date *Sept 13, 1904*
 Mine, *No. 1 (Copper) below* Sec. T. R.
 Located, *5 1/2* miles from *S. M. O'Fallon - Branch comm mainline*
 Location in mine, *1200 ft N 7 shaft* *(E. H.)*

GRAPHIC SECTION		DESCRIPTION OF SECTION (AT POINT SAMPLED)			
In.	No.	No.	(Note character and thickness of roof)	Inches	
	1		Coal	17 1/4	17 1/4
	2		Sulphur knife edge		—
	3		Coal	26 3/4	9 1/2
12	4		Sulphur knife edge		—
	5		Coal	34 1/4	7 1/2
24	6		Shale	34 3/4	1/2
	7		Bone		—
36	8		Coal	48 1/4	13 1/2
	9		Sulphur, knife edge		—
48	10		Shale		—
	11		Coal	52 1/4	4
60	12		Shale	53 1/4	1
	13		Coal		—
72	14		Coal	75 1/4	22
	15		Shale		—
	16		Coal		—
(Note character and thickness of floor)					
Total thickness of coal.					75 1/4
Condition,		Time,	hr.	min.	
Wt. Gross,		lbs.	Net,	lbs.	
What Nos. shipped by Co.?					
Excluded from sample: No. <i>6 7 10 12 15</i>					
Sample represents <i>73 3/4</i> in. tons.					
Impurities? How do they occur? <i>Bulletin 22, p. 505.</i>					

Sample No. _____ Can No. _____ Lab. No. *BM 1095*
 Collector, *M. R. Campbell* Coal: Survey No.
 Mine, _____ Co. *St. Clair* Index No. *033 3/4*
R.—COAL SAMPLE SHEET.