

FIELD NOTES

Illinois State Geological Survey

p. 2.
(1530.3a cont.)

ledges exposed 3'

3a Section exposed in small gully in S. bank of Coal Creek about 400' W. of bridge.

Coal disturbed and mixed with till
Underclay, gray, soft, yellow stained, plastic 2'

Limestone, gray, shaly, dense, very irregularly bedded to conglomeratic and nodular, changes character laterally, and includes some shale 6'

Limestone exposed in road is probably over coal.

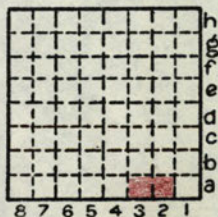
2a Coal exposure in small gully in S. bank of Coal Creek 450' E. of bridge.

Shale, gray, thin-bedded, soft 16"

Coal, banded, shaly at top, bright and good near base, very weathered, so true character masked 40"

Clay, dark gray, soft, coaly at top, with many limestone pebbles and small nodules near base of exposure 4' 0"

3a Old mine - abandoned shaft. 40' to coal, coal over 4' 0". 14' of limestone, then some gray shale over coal



By E. T. Benson Date 1935?

Quadrangle Jacksonville

County Morgan Sec. 30 T. 13N R. 10W