



Mine originally operated by: (1)

Jones & Brewer Coal Co.

Date

1936 L-2

Original name or number:

Illinois Coal Report 1936 p.

LATER OPERATORS

Date	Operator	Name or No.
2 1937	Harvey Comp's Mine	
3 1930	Jesse Sturm 1	No 1
4 1942	Tale	
5		
6		
7		
8		
9		
10		
11		
12		
13		
14		

*Ab
Loc'n from O'Neill Plan
mined out maps Aka 3*

* Also owners

#See ownership sheet

Railroad, Wagon, Idle, Abandoned

Shaft Mine

IDENTIFICATION L-2

County No.

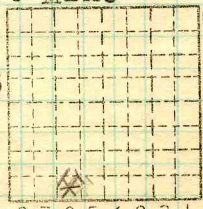
Coal No. 6

L-2

Quad. Annawan



Part



Sec. 22
16 N.
T. 6 E.
R. 6 W.

County Bureau

Index No. 182206

COAL MINE OPERATOR



(Sheets) COAL PRODUCTION (Sheet)

Period
Mo. Day Year Mo. Day Year Tons

Period		Tons
Mo.	Day Year	
	1937	2 163
	1938	799
	1939	246
	1940	2 222
	1941	2 509
	1942	932

Local Mine

SUMMARIES

No.	to	No.	Tons
1937		1942	8 871

Railroad, Wagon, Strip, Idle, Abandoned

Sec.

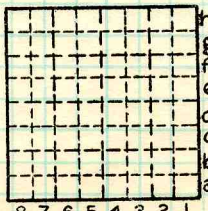
IDENTIFICATION

County No. _____ Coal No. _____

Coal Report No. L-2

Quad.

County Bureau



T. N.
S.
E.
R. W.
Index No.

COAL MINE—PRODUCTION

ILLINOIS GEOLOGICAL SURVEY, URBANA