



Mine originally operated by: (1)

Date
1922

Gr Davis Mine

Original name or number:

Illinois Coal Report _____ p. _____

Fuer #22

LATER OPERATORS

Date Operator Name or No.

- 2
- 3
- 4
- 5
- 6
- 7
- 8
- 9
- 10
- 11
- 12
- 13
- 14

* Also owners

#See ownership sheet

Railroad, Wagon, Idle, Abandoned

LOCAL MINE

IDENTIFICATION

County No. 496

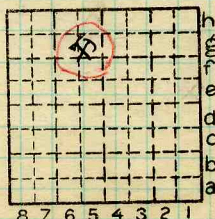
Coal No.



Part

Quad.

County Macoupin



Sec. 29

T. 10 N. 3

R. 9 W. 3

Index No.

COAL MINE OPERATOR

1229.50