



258

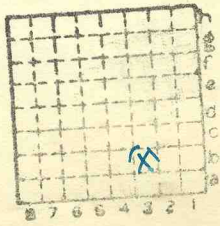
FORM 180

ISGS Mine Index # 3301

S.B. Moore.

L 6

778



Sec.	14
T.	9
R.	7
N.	S.
E.	W.

Index No.





Mine originally operated by: (1) **Silas B. Moore**

Date 1936

(1935) Original name or number: #4
Illinois Coal Report 1936 p.

LATER OPERATORS

Date	Operator	Name or No.
2		
3		
4		
5		
6		
7		
8		
9		
10		
11		
12		
13		
14		

Sec 23
1937 95
7E

*Also owners

#See ownership sheet

Railroad, Wagon, Strip, Idle, Abandoned **Slope Mine**

IDENTIFICATION

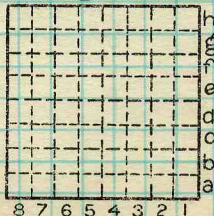
County No. 770

Coal No. 5

Coal Report No. L-6

Quad. Equality

County Saline



Sec. 14

T. 9 ^{*}S.

R. 7 ^{*}E.

Index No. 0714 b3

COAL MINE OPERATOR

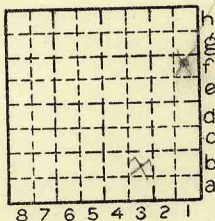
Location and Elevation Data

Location: Exact Approximate
(Approximate only if no trace of record of original exists)
Location by Dept Mines & Minerals
Date Notebook No. Page
Looseleaf ref.
Map files No.

Description of Location

Position in sec., 1/4 sec., 40 acres

feet from North line
feet from East line
feet from South line
feet from West line



1939 83
Sec. 14
T 9 S.
R 7 E.
W.

Other description: SENE 1939
L-6
Farm No.
Company Silas B. Moore
No. #4
County No. 770

Elevation 390 ft.

By EFT

Method: Level, transit, alidade, hand level

Field Estimate

Elevation of
Height of point above ground
Date Notebook P.
Looseleaf ref.

Map files No.
Description of item: (drill hole, mine, etc.) Slope Mine

County Saline Quadrangle Equality Index No. 0714 b3

1939-30