





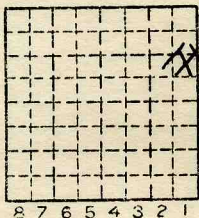
Location and Elevation Data

Location: Exact Approximate
(Approximate only if no trace of record of original exists)
Location by DMM film 1939
Date Notebook No. Page
Looseleaf ref.
Map files No.

Description of Location

Position in sec., 1/4 sec., 40 acres

feet from North line
feet from East line
feet from South line
feet from West line



Sec. 15
T 19 N.
R 8 E.
12 W.

Other description: L-201
NOV. 15
OPENED SINK 1939

Farm
No.
Company K & T Coal Co.
No.
County No.

Elevation ft.
By
Method: Level, transit, alidade, hand level

Elevation of
Height of point above ground
Date Notebook P
Looseleaf ref.

Map files No.
Description of item: (drill hole, mine, etc.) STRIP MINE
12' to 6' of #2 (DMM film 1939)
County Vermilion Quadrangle 149 Index No. 1815F1

Mine originally operated by: (1)

Date  
1939

*K & T Strip Mine*

Original name or number:

*Artie Taylor*

Illinois Coal Report

p.

LATER OPERATORS

Date	Operator	Name or No.
2		
3		
4		
5		
6		
7		
8		
9		
10		
11		
12		
13		
14		

\*Also owners

#See ownership sheet

Railroad, Wagon, Strip, Idle, Abandoned

IDENTIFICATION

County No. \_\_\_\_\_

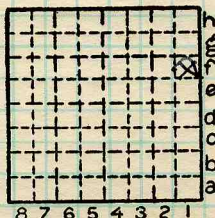
Coal No. \_\_\_\_\_

Coal Report No. L-201

7

Quad. *Danville*

County *Vermilion*



Sec. *15*

T. *19* N. *2.*

R. *12* W. *2.*

Index No.

*1815 F1*

COAL MINE OPERATOR





( Sheets ) COAL PRODUCTION ( Sheet )

Period						Tons	
Mo.	Day	Year	Mo.	Day	Year		
					1939		115
					1940		275
					1941		

SUMMARIES		
No.	to	No.

Railroad, Wagon, Strip, Idle, Abandoned

IDENTIFICATION

1941

County No. \_\_\_\_\_

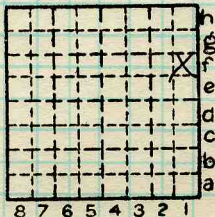
Coal No. \_\_\_\_\_

Coal Report No. L-201

7

Quad. Danville

County Vermilion



Sec. 15

T. 19 N.

R. 12 W.

Index No.

1815 F1

COAL MINE—PRODUCTION

ILLINOIS GEOLOGICAL SURVEY, URBANA