

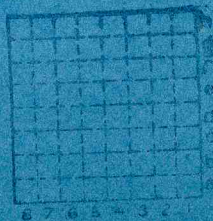


Form 180 Blue

W. & W. Coal Co.

L-5

mine index: 3873



Sec: 23 H7  
 T. 19 N  
 S.  
 R. 12 W  
 E.  
 Index No.

Company Mauck Bros. - W. W. C. C. Drill Hole No. \_\_\_\_\_

Mine or Prospect drift mine Farm \_\_\_\_\_

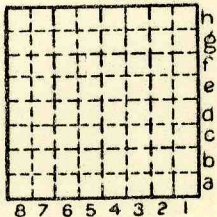
Date Drilled \_\_\_\_\_ Drilled by \_\_\_\_\_ Driller \_\_\_\_\_

Elevation 600' by ETM Method \_\_\_\_\_

Location: \_\_\_\_\_ County Vermilion County Number \_\_\_\_\_

Drift:  
738' WL  
83' NL  
sec. 23

Airshaft: 559' WL sec. 23  
0' NL



|          |
|----------|
| Sec. 23  |
| T. 19 N. |
| R. 12 W. |

Quadrangle Danville SW

Core Description

Collected \_\_\_\_\_  
or  
Logged by: \_\_\_\_\_ Recorded by \_\_\_\_\_

Date \_\_\_\_\_ Total Depth \_\_\_\_\_

Core logged from \_\_\_\_\_ to \_\_\_\_\_

Samples taken: \_\_\_\_\_

General Remarks: \_\_\_\_\_





FORM 180 W

Production For: Mauck Bros. - W.W. C.C.

mine index 3873

| Year | Production | Year | Production |
|------|------------|------|------------|
|------|------------|------|------------|

|      |                         |        |  |
|------|-------------------------|--------|--|
| 1929 | Mauck Bros. C.C.        | 2,262  |  |
| 1930 | Mauck Bros.             | 7,910  |  |
| 1931 | A.S. Mauck + W.T. Mauck | 7,300  |  |
| 1932 | Albert + Walter Mauck   | 10,142 |  |
| 1933 | W+W C.C.                | 13,064 |  |
| 1934 | W+W C.C.                | 11,528 |  |
| 1935 |                         | 17,244 |  |
| 1936 |                         | 11,560 |  |
| 1937 |                         | 23,555 |  |
| 1938 |                         | 16,515 |  |
| 1939 |                         | 13,494 |  |
| 1940 |                         | 17,355 |  |
| 1941 |                         | 19,279 |  |
| 1942 |                         | 13,755 |  |
| 1943 |                         | 21,149 |  |
| 1944 | W+W C.C.                | 15,120 |  |

---

221,232 total tons