



MAP IN FILES SHOWS THIS
LOCATION AS FIFTH VEIN CC
NO. 5

:

Location sheet filed

OPENED: 1938

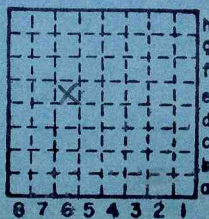
ABANDONED: AUGUST, 1972

Sahara C.C., 5 ^{INC.}

COUNTY No. 1343

MI 664

S-16



Sec. 29

T. 9 N
S.

R. 5 E

Index No. ✓



Mine originally operated by: (1) Bankston Creek Colliery

Date

1938

Original name or number: #5

Illinois Coal Report 1938 p.

LATER OPERATORS

Date	Operator	Name or No.
2	SAHARA COAL CO.	#5
3	1965 Sahara Coal Co., Inc.	#5
4	ABANDONED : AUGUST, 1972	
5		
6		
7		
8		
9		
10		
11		
12		
13		
14		

60' N 520' E of SW corner SE NW (1948)

1948 OK

*Also owners #See ownership sheet

Railroad, Wagon, Strip, Idle, Abandoned Slope

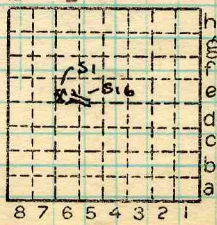
IDENTIFICATION

County No. 1343 Coal No. 5

Coal Report No. S-16

Quad. Harrisburg (1948) 4'6"

County Saline



Sec. 29

T. 9 N. S.

R. 5 E. W.

Index No. 0929 e6

COAL MINE OPERATOR



(Sheets)

COAL PRODUCTION

(Sheet)

No.	Period						Tons	
	Mo.	Day	Year	Mo.	Day	Year		
S-16	1	1	1938	12	31	1938	144	251
						1939	405	972
						1940	512	430
S-16	1	1	1941	12	31	1941	575	146
S-16	1	1	1942	12	31	1942	619	698
						1943	537	141
						1944	512	200
						1945	564	262
						1946	499	110
						1947	481	264
						1948	460	872
						1949	557	983
						50	486	363
						51	419	549
						52	379	516
						53	100	379
						1954	340	989
						1955	491	894
						1956	340	989
						1957	458	045
						1958	473	061
						1959	476	453
						1960	525	200
						1961	512	458
						1962	606	687

SUMMARIES

No. to No.

Railroad, Wagon, Idle, Abandoned slope

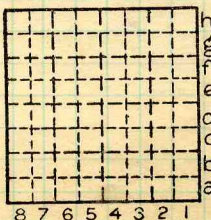
IDENTIFICATION

S-16

County No. 1343 Coal No. 5

Harrisburg Part Quad.

County Saline



Sec. 29

T. 9 N.
R. 5 E.
W.

Index No.

0929 e6

COAL MINE—PRODUCTION

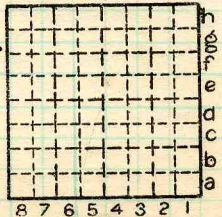
Period				Tons	
Mo.	Day	Year	Mo.	Day	Year
		1963			643 512
		1964			602 802
		1965			657 478
		1966			658 711
		1967			634 111
		1968			692 543
		1969			890 074
		1970			658 928
		1971			427 628
		1972			123 848

SUMMARIES			
No.	1950 to 1971(inc) No.	11	478 370

Railroad, Wagon, Strip, Idle, Abandoned *Slope* Sec. 29

IDENTIFICATION

County No. _____ Coal No. 5
 Coal Report No. S-16
 Quad. HARRISBURG
 County SALINE



T. 9 S. 1
 R. 5 E. 1
 Index No.

0929 e6

COAL MINE—PRODUCTION

ILLINOIS GEOLOGICAL SURVEY, URBANA



LOCATION AND ELEVATION

Location: side R. R.
side R. R.
side Highway No.

on top. map Location sheet

Elevation: Method, 1. Est. () ft.
2. Inst. (kind) ft.

By Data sheet

DEPTH

Authority To coal 135 ft.
Authority Rail to rail ft.
Top of coal above rail. (Est. Rule) ft.
To coal ft.

ALTITUDE OF TOP OF COAL

By estimated data ft.
By instrumental data ft.

Thickness

Max. in. Min. in. Aver. 60 in.

GEOLOGICAL DATA

Mine notes, date

Coop No. Pyr. inv. Coal Ash inv.

CHEMICAL DATA

Analyses Face U. I. B. M. Others
Car U. I. B. M. Others
Org. Sulf U. I. B. M. Others
Ash fusion U. I. B. M. Others
Ash anal. U. I. B. M. Others
#664 U. I. B. M. Others

Classification Sup. B62

Misc. tests: Coking. Cleaning Boiler

Published descriptions:—

Railroad, Wagon, Idle, Abandoned Slope

IDENTIFICATION

County No. 1343

Coal No. 5

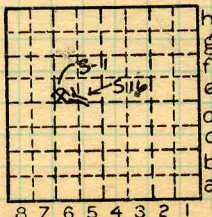
S-16



Part

Quad. Harrisburg

County Saline



Sec. 29
T. 9 N. S.
R. 5 E. W.
Index No. 0929 e6

COAL MINE LOCATION AND DATA

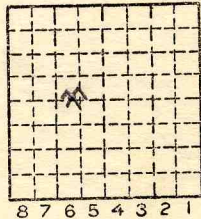
Location and Elevation Data

Location: Exact Approximate
 (Approximate only if no trace of record of original exists)
 Location by Dept. of Mines & Minerals Film, 1938
 Date..... Notebook No..... Page.....
 Looseleaf ref.....
 Map files No.....

Description of Location

Position in sec., 1/4 sec., 40 acres

2590 feet from North line
 feet from East line
 feet from South line
 1840 feet from West line



Sec. 29
 T N.
 9 S.
 R 5 E.
 W.

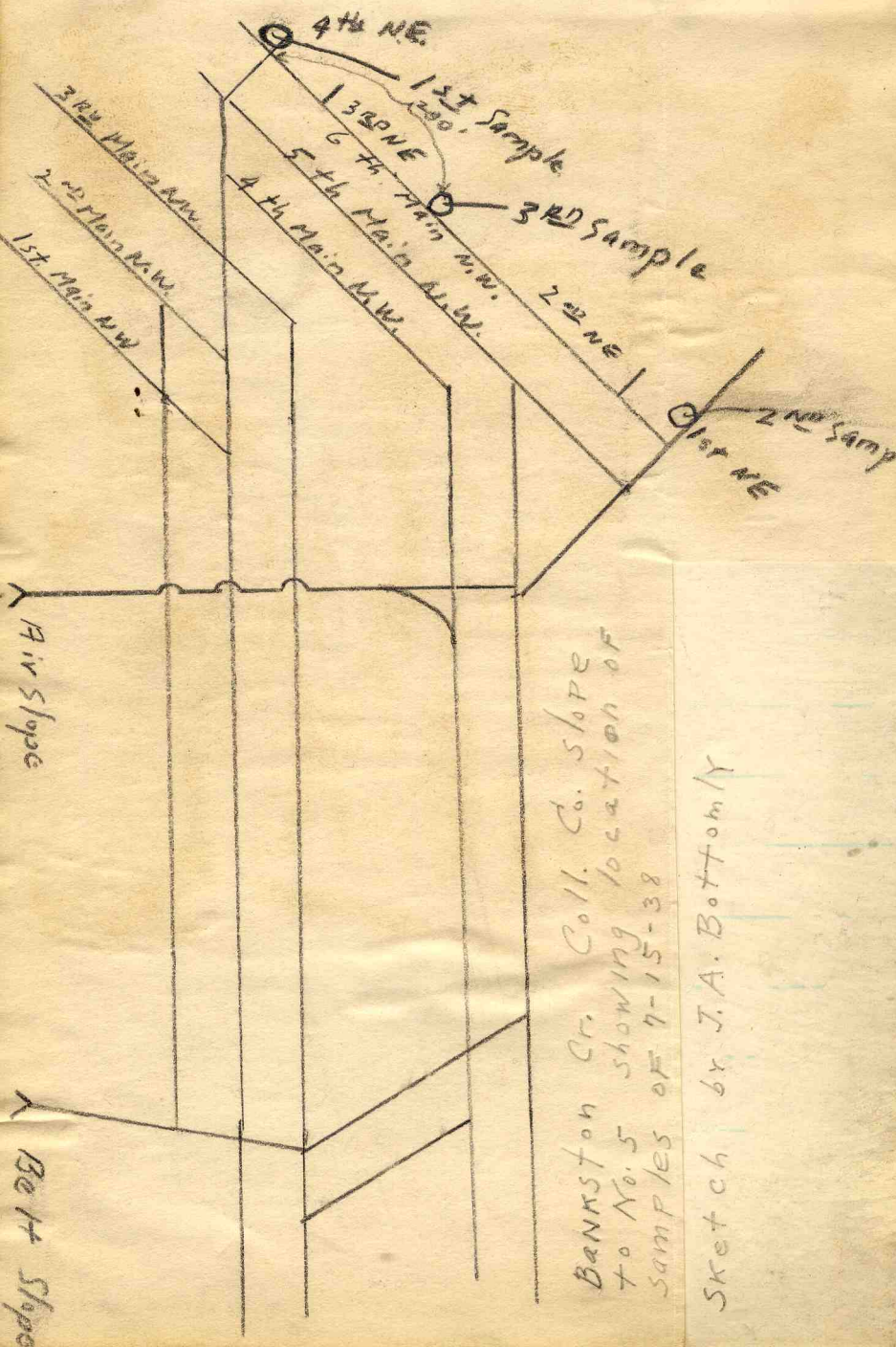
Other description:.....
 60' N } SW or SE NW
 520' E }
 Farm.....
 No.....
 Company Bankston Creek
 Colliery
 No. #5
 County No. 1343

Elevation.....ft.
 By.....
 Method: Level, transit, alidade, hand level

Elevation of.....
 Height of point above ground.....
 Date..... Notebook..... P.....
 Looseleaf ref.....

Map files No.....
 Description of item: (drill hole, mine, etc.) Slope Mine

County Saline Quadrangle Harrisburg Index No. 0929 e6



4th NE

1st Sample

3rd NE

3rd Sample

3rd Main NW

2nd Main NW

1st Main NW

4th Main NW

2nd NE

2nd Sample

1st NE

River Slope

Beet Slope

BANKSTON CR. COLL. CO. SLOPE
 TO No. 5 showing location of
 SAMPLES OF 7-15-38

Sketch by J. A. Bottomly
 4049

Operator, *Banksston Cr. Coll. Co.* Date *7-15-38*
 Mine, *Slope in #5* Sec. *29* T. *95* R. *5E*
 Location in mine, *4th NE OFF 6th main NW (see sketch)*

GRAPHIC SECTION		DESCRIPTION OF SECTION (AT POINT SAMPLED)	
In.	No.	No. (Note character and thickness of roof)	Inches
	1	1. Gray shale roof	
<i>10 1/2</i>	2	2. Coal	<i>10 1/2</i>
<i>1/4</i>	3	3. Fusain	<i>1/4</i>
	4	4. Coal	<i>38</i>
<i>38</i>	4	5. Coal (removed in machine cut)	<i>6</i>
	4	6. Underclay	
<i>6</i>	5		
	6		
		(Note character and thickness of floor)	
		Total thickness of coal.	<i>54 3/4</i>
		Condition, <i>dry</i>	Time, hr. <i>30 min.</i>
		Wt. Gross, <i>60</i> lbs.	Net, lbs.
What Nos. shipped by Co.?			
Excluded from sample: No. <i>1, 5, 6</i>			
Sample represents <i>48 3/4</i> in. tons.			
Impurities? How do they occur?			

(1 division = 3 in.)

moisture sample also from this cut

Sample No. *A* Can No. *1* Lab. No. *C-2015*
 Collector, *L.C. McCabe, A.E. Spotti, G. Land* Coal: Survey No. *5*
 Mine, *Banksston Cr. Coll. Co.* Co. *Saline* Index No. *0929-EG*
SLOPE IN #5

R.—COAL SAMPLE SHEET.

Operator, *Bannston Cr. Coll. Co.*

Date *7-15-38*

Mine, *Slope to #5*

Sec. *29* T. *95* R. *5E*

Location in mine, *1st NE off 6th main NW (see sketch)*

GRAPHIC SECTION		DESCRIPTION OF SECTION (AT POINT SAMPLED)	
In.	No.	No. (Note character and thickness of roof)	Inches
	1	1. Gray shale roof	
<i>11 1/2</i>	2	2. Coal	<i>11 1/2</i>
<i>1/4</i>	3	3. Fusain parting	<i>1/4</i>
<i>9 1/4</i>	4	4. Coal	<i>9 1/4</i>
<i>1/2</i>	5	5. Fusain parting	<i>1/2</i>
<i>13 1/2</i>	6	6. Coal	<i>13 1/2</i>
<i>1/2</i>	7	7. Pyrite lens	<i>1/2</i>
<i>7 1/4</i>	8	8. Coal	<i>7 1/4</i>
<i>1/4</i>	9	9. Fusain parting	<i>1/4</i>
<i>10</i>	10	10. Coal	<i>10</i>
	11	11. Underclay (Note character and thickness of floor)	
Total thickness of coal.			<i>53</i>
Condition, <i>dry</i>		Time, <i>hr. 45 min.</i>	
Wt. Gross, <i>50 lbs.</i>		Net, <i>lbs.</i>	
What Nos. shipped by Co.?			
Excluded from sample: No. <i>1 & 11</i>			
Sample represents <i>53</i> in. tons.			
Impurities? How do they occur? <i>Pyrite lenses</i>			

(1 division = 3 in.)

Sample No. *B* Can No. *2 (white)* Lab. No. *C-2016*

Collector, *L.C. McCabe, A.E. Spotti, G. Land* Coal: Survey No. *5*

Mine, *Bannston Cr. Coll. Co* Co. *Saline* Index No. *0929-56*

R.—COAL SAMPLE SHEET.

Operator, *Bankston Cr. Coll. Co.* Date *7-15-38*
 Mine, *Slope to No. 5* Sec. *29* T. *95* R. *5E*
 Location in mine, *6th main NW (see sketch)*

GRAPHIC SECTION		DESCRIPTION OF SECTION (AT POINT SAMPLED)	
In.	No.	No.	Inches
	1	1. Gray shale roof	
16	2	2. Coal	16
	3	3. Pyrite lens	1 1/2
1 1/2	4	4. Coal	20 3/4
	5	5. Fusain parting	1/2
20 3/4	6	6. Coal	20
1/2	7	7 Underclay	
20		(Note character and thickness of floor)	
		Total thickness of coal	56 3/4
(1 division = 3 in.)		Condition, <i>Dry</i>	Time, hr. <i>30 min.</i>
		Wt. Gross, <i>50</i> lbs.	Net, lbs.
What Nos. shipped by Co.?			
Excluded from sample: No. <i>1, 3, 7</i>			
Sample represents <i>56 3/4</i> in. tons.			
Impurities? How do they occur? <i>Pyrite in lenses</i>			

Sample No. *3 C* Can No. *3* Lab. No. *C-2017*

Collector, *L.C. McCabe, A.E. Spotti, G. Land* Coal: Survey No. 5

Mine, *Bankston Cr. Coll. Co.* Co. *Saline* Index No. *0929-E6*
 R. COAL SAMPLE SHEET.

Channel sample #1 - 8/23/67 - Exc. 24; 260'W. and 110'S.
of center of E. line; 24-9S-4E; Williamson County

H. Gluskoter; F. Murray; J. Palomino

D1

From top downward:

Gray shale roof with few vitrain partings within a few inches over coal.

Coal - normally bright banded, minor calcite and pyrite on vertical fractures

07"

Shale - carbonaceous, pyritic, lenticular, 3/4" of section of shale omitted from sample

Coal - normally bright banded, fusain stringers, less than 1/8" at 10 1/2" and 12 1/2". Minor pyrite on vertical fractures. Fusain less than 1/2" from 1'3 1/2" to 1'04"

1'04"

Coal - normally bright banded, calcite and minor pyrite on vertical fractures; vertical zone + 1" of calcite veinlets extending alongside of channel from 1'4" to 2'2". 1/16" mineralized fusain at 1'9 1/2" to 2'4"

2'04"

Coal - normally bright banded, minor pyrite and calcite on vertical fractures; 1/16" soft fusain at base

Coal - normally bright banded - 2" zone of calcite veinlets at center of channel from 3'3" to bottom of seam. Less than 1/16" pyrite stringers at 3'08" and 3'08 1/2". Fusain relatively soft, 1" of center of channel pinches out laterally within a few inches; from 4'01" to 4'02"

4'02"



Coal - normally bright banded.

Bottom 6" of coal is dump

4'03"

Underclay

Sahara Coal Co. - Mine #5

8-23-67

Channel Sample #2 - 8/23/67 - 600'E., 1250' S., of center of W. line; Sec. 30-9S-5E; Saline County

H. Gluskoter; F. Murray, J. Palomino

Total thickness: 4'03"

Dark gray shale roof at very top of coal. 1/8" thick highly pyritized coaly shale

Coal - normally bright banded, pyrite in vertical fractures, pyrite stringer 1/16" expands laterally to 3/8"

01"

Coal - normally bright banded, abundant pyrite on vertical fractures

08"

Bony coal with pyrite nodule (in center) about 1/2" by 2". Pyrite nodules omitted from sample

09"

Coal - normally bright banded, pyrite on vertical fractures, fusain soft, 1/8" at 11" and 13"

13"

Coal - normally bright banded, abundant pyrite and some calcite in fractures, 1/8" soft fusain at base

1'09"

Coal - bright banded with increased amount of fusain, Fusain 1/8" approximately at 23", 24", 25", & 26"

2'02"

Coal - normally bright banded, calcite and pyrite on vertical fractures

2'11 1/2"

Fusain, hard, mineralized

3'00"



Coal - normally bright banded, calcite on vertical fractures. No pyrite visible on bottom foot of seam. Two thin 1/16" pyrite stringers at bottom of seam.

4'03"

:



Sample: Face channel 3; Location, c.c. left of R.31 main off 12NE, 22NW - 1325'N., 425'W. from SE/c SW SE; Sec. 15-9S-5E

Williamson Saline

H. Gluskoter; F. N. Murray; J. Palomino

Top - Down

Total thickness: 6'3"

Coal - normally bright banded, minor calcite on vertical fractures, thin pyrite stringer less than 1/8" at 4"	4"
Coal - normally bright banded, calcite and pyrite on vertical fractures, thin, less than 1/8" soft fusain at 5", thin, less than 1/16" pyrite stringers at 9", 1/4" bony band and 12 1/2"	14"
Shale - coaly, highly pyritic, 3/8" omitted from sample	14 3/8"
Coal - normally bright banded with more fusain than top 1', thin, less than 1/8" fusain bands at 18 1/2", 21", 22", 27", 28", & 30"	30"
Coal - normally bright banded, calcite and pyrite on vertical fractures with 3/8" fusain soft at base	41"
Coal - normally bright banded, abundant calcite and some pyrite on cleat, 1/4" soft fusain at base	45"
Coal - normally bright banded, calcite on vertical fractures	52 1/2"
Fusain, soft with vitrain stringer less than 1/8" in center	53"
Coal - normally bright banded, calcite and pyrite on vertical fractures, bottom marked laterally by 1/2" pyrite lenses represented by several small veinlets in section of channel (Face channel)	67"



Coal - normally bright banded, cal-
cite and pyrite on vertical frac-
tures

72"

Coal - bony with thin vitrain stringers
2½"

74½"

Coal - normally bright banded, ½"

½"

Underclay

