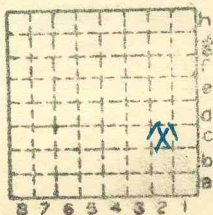


Madva CC #9

448

Mi. 164, BM 62



Sec. 22 C2

T. 8 ~~N.~~
S.

R. 1 ~~E.~~
~~W.~~

Index No.



Mine originally operated by: (1) **Colp Coal Co.**

Date
1906

Original name or number: **#9**
Illinois Coal Report **p.**

LATER OPERATORS

Date	Operator	Name or No.
2 1906	Madison Coal Corporation	#9
3		
4		
5		
6		
7		
8		
9		
10		
11		
12		
13		
14		

* Also owners

#See ownership sheet

I.C. SHIPPING MINE IDENTIFICATION

Railroad, Wagon, Idle, Abandoned **1931**

County No. **448**

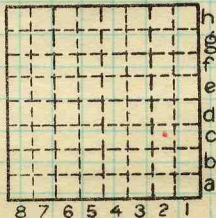
Coal No. **6**



Part

Quad. **Herrin**

County **Williamson**



Sec. **22**

T. **8** S.

R. **1** E. W.

Index No.

0422 c2

COAL MINE OPERATOR



LOCATION AND ELEVATION

Location: side R. R.
side R. R.
side Highway No.
on top. map Location sheet

Elevation: Method, 1. Est. () ft.
2. Inst. (kind Hand Level) 395.5 ft.
By T.E.S. NB102 p.15 Data sheet

DEPTH

Authority To coal ft.
Authority Rail to rail ft.
Top of coal above rail. (Est. Rule) ft.
To coal 111 ft.

ALTITUDE OF TOP OF COAL

By estimated data
By instrumental data 285 ft.

Thickness

Max. in. Min. in. Aver. 106 in.

GEOLOGICAL DATA

Mine notes, date
Coop No. Pyr. inv. Coal Ash inv.

CHEMICAL DATA

Analyses Face U. I. 1917, 1804, B. M. Others
Car U. I. 1887, 1896, B. M. Others
Org. Sulf U. I. 13538 B. M. Others
Ash fusion U. I. B. M. Others
Ash anal. U. I. B. M. Others
U. I. B. M. Others

Classification

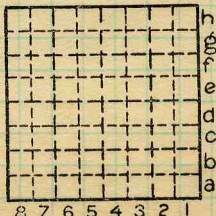
Misc. tests: Coking. Cleaning Boiler

Published descriptions:--

Railroad, Wagon, Idle, Abandoned 1931

IDENTIFICATION

County No. 448 Coal No. 6
Quad. Herrin
County Williamson



Sec. 22

T. 8 S.
R. 1 E.

Index No. 0422 c2

COAL MINE LOCATION AND DATA

Town, Dewmaine

Local Authority,

Level: Auth., TES; NB102-p15;
NB89-p17

Method, HL.

Surface alt., 395.5 ft.

Depth to coal, 111 ft.

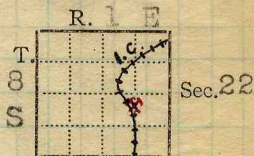
Alt. top coal, 284 ft.

Thickness: Av. 106 in.

Max. in., Min. in.

R. R., I. C.

Location: authority, TES; folio



(Show R. R.)

Operator **GEN'L COAL REPT.**

Mine Name or No.

448 ✓

19 06 Madison Coal Corp.

No. 9

Standard Oil Bldg, Chicago.

✓ Successor to Colp Coal Co

Date 1906

Succeeded by

Date

Succeeded by

Date

PRODUCTION.

Q ✓

				Fiscal		U. S. No.
1915				456	939	703
26	<i>Daily Exp</i>	<i>2800 Ton</i>				
27	<i>276 349</i>					
1928						
				<i>24</i>	<i>43</i>	<i>1930 #24</i>

Geol. Notes? Yes Coop. No.

Coal secs.? 4

Analyses No. 1917, 1804, 1887, 1896, 13538

Examined by TES;

Ref.

Coal bed name: Local

Survey No. 6

County Williamson

Index No. 0422.74

K.—ACTIVE SHIPPING OR LOCAL COAL MINE.

Perm. abd



COAL MINE NOTES.

0422

COUNTY *Williamson*

TOWN *Dew Maine*

MAP No. ~~0422~~

T. *85*

R. *1E*

S. *22 N.E. 1/4, SE 1/4*

OPERATOR *Madison Coal Corporation.*

OFFICE *St. Louis*

MINE *9*

TIPPLE

ENGINES

BOILERS

DRUM

SHAFT

CAGE

HAULAGE

CARS

VENTILATION

DRAINAGE

SPRINKLING

WORKING SYSTEM

MINING METHODS

SIZE OF ENTRIES—MAIN

CROSS

ROOM

NECK

SIZE OF PILLARS—MAIN

CROSS

ROOM

SHAFT

CHAIN

BARRIER

AMOUNT OF TIMBERING

SIZE

PROPORTION OF COAL UTILIZED

AMOUNT AND CHARACTER OF WASTE

ACREAGE OF COAL MINED

ACREAGE OF COAL REMAINING

PROPORTION OF MINE RUN AND SCREENED COAL

METHOD OF SIZING

RESCREENED

SIZES

PER CENT

PROPORTION AND SIZE OF WASHED COAL

DAILY OUTPUT

UTILIZATION

MARKETS

FREIGHT RATES

SELLING PRICES AT MINE

0422

COAL LAND OWNED

LEASED

HELD IN FEE

0422

COST OF LAND OWNED

LEASED

HELD IN FEE

ADDITIONAL NOTES



COAL MINE NOTES.
CONTINUED.

0422

OPERATOR *Madison Coal Corporation* MINE *9*
 ENTRANCE *Shaft.* NAME OF COAL BED
 ELEVATION *503* THICKNESS OF COAL
 DEPTH TO FLOOR *120* MAX. MIN. AV.
 ALTITUDE OF COAL *383 280*
 LOCATION OF SECTION

No.	SECTION.	In.
1		
2		
3		
4		
5		
6		
7		
8		
9		
10		
11		
12		
Tape		Total

SAMPLE No.
 CAN No.
 CONDITION
 GROSS WEIGHT
 TIME EXPOSED
 NOT SHIPPED
 NOT INCLUDED

SECTION	Feet

PHYSICAL PROPERTIES BY NUMBERS

ROOF

FLOOR

DIP

FAULTS, ETC.

GAS

COLLECTOR *Savage*

REFERENCE *N.B. 89 P 17*

DATE *10/22*

0422

Operator, *Madison Coal Corp* Date *Mar. 8, 1922*
 Mine, *No. 9*
 Location in mine, *Room 62, 11th N.W.* Sec. T. R.

GRAPHIC SECTION		DESCRIPTION OF SECTION (AT POINT SAMPLED)		
In.	No.	No.	(Note character and thickness of roof)	Inches
			<i>Coal roof</i>	<i>18</i>
		<i>1</i>	<i>Coal</i>	<i>29 2/8</i>
		<i>2</i>	<i>Charcoal</i>	<i>2/8</i>
		<i>3</i>	<i>Coal</i>	<i>8 6/8</i>
		<i>4</i>	<i>Charcoal</i>	<i>1/8</i>
		<i>5</i>	<i>Coal</i>	<i>13 6/8</i>
		<i>6</i>	<i>Charcoal</i>	<i>1/8</i>
		<i>7</i>	<i>Coal</i>	<i>6 2/8</i>
		<i>8</i>	<i>Shale B.B.</i>	<i>6/8</i>
		<i>9</i>	<i>Coal</i>	<i>20</i>
			<i>Medium grey floor clay</i>	
			<i>Tape 79</i>	
			(Note character and thickness of floor)	
			Total thickness of coal.	<i>97 3/8</i>

Condition, *Dry* Time, *1 hr. 5 min.*
 Wt. Gross, *35* lbs. Net, *4* lbs.
 What Nos. shipped by Co.? *All but 8*
 Excluded from sample: No. *8*
 Sample represents *78 1/2* in. tons.
 Impurities? How do they occur? *Pyrite facings charcoal partings & lenses.*

(1 division = 3 in.)

Sample No. *N-22-33* Can No. *1412* Lab. No. *13538*

Collector, *Netzeband* Coal: Survey No. *6*

Mine, *Madison #9* Co. *Williamson* Index No.

Sample #3 Sample Data.
Can #93

Face Coal Sample. Mine #9 Madison Coal Corporation.

Town - Herrin

Representing 7' - 2" inches.

Excluded - 1, 2, 10 - 12 - 14

Shipped - 3 - 4 - 5 - 6 - 7 - 8 - 9 - 11 - 13

Section of Coal

x1 Roof-Gray Slate		
x2 Top Coal		2'
3 Coal-Mother of coal streaks		1 1/4'
4 Mother of Coal		3/8
5 Coal - Sulphur streaks		5 1/2 3/8
6 Mother of Coal		7 1/2
7 Coal		3/8
8 Mother of Coal		1 1/2 3/4
9 Coal	2	10 1/2
x10 Mother of Coal		2 8
11 Coal		
x12 Blue Band		
13 Coal	1	
x14 Floor - Fire clay.		
Impurities consist of -		7' 2"

Condition of coal - Dry.

Location in mine -

Weight gross; 4# net. Date 11/27/12.

C. W. Smith - sampler.

Cont locate

Sample # B Sample Data. Can # "H".
Face Coal Sample - Mine #9 Madison
Town - Herrin Coal Corp.

Representing 6' 10" inches.
Excluded -

Shipped

Section of Coal.

X1	Roof - Black slate	
X2	Top coat	10"
3	Coal clean	<hr/> 6 1/2
4	Mother of coal	4 1/4
5	Coal - somewhat streaked	1'
X6	Blue band	1 1/4
7	Coal - fairly clean	1' 10"
X8	Fire clay.	<hr/> 6' 10"

- 9
- 10
- 11
- 12
- 13
- 14
- 15
- 16
- 17
- 18

Impurities consist of - Sulphur in vertical streaks - CaSO₄ on cleat.
Condition of coal - Dry.

Location in Mine - Room #40 off 6th Soff W.

Weight gross; 4# net: Date - 11/27/12

C.W. Smith - Sampler.

Can locate

no analysis

SAMPLE DATA.

Label- Sample #1 Can No.- 94

Sample of- Face Coal Mine No.- 9. Madison
Town- Herrin Coal Corp.

Representing 6' 10 1/2" inches.

Excluded- 1, 2, 10, 12, 14

Shipped- 3, 4, 5, 6, 7, 8, 9, 11, 13

Section of Coal Bed.

X1. Roof - Black slate.		
X2. Top Coal		18"
3. Bright coal		4"
4. Coal - Sulphur streaked		5 1/2"
5. Coal - somewhat "	2'	
6. " - Much sulphur		1 1/2
7. " - Clean	1	7
8. Bone		2 1/2
9. Coal - clean		4 1/2
X10. Blue band		2 1/2
11. Coal - clean	2	3 1/2
X12. Bone		1 1/2
13. Coal - Fairly clean	1	1 1/2
X14. Floor - Fire clay		
15.		
16.		
		6' 9 3/8

Impurities consist mainly of- Sulphur in horizontal + vertical streaks. A little CaSO₄
Condition of coal- Dry

Location in mine- Face of 7th N. off W. Room #2Weight 70[#] gross; 4[#] net. Date of sampling- 11/27

Samplers- C.W. Smith-

Cut Locate

No. 25/26