

FIELD NOTES

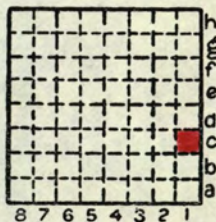
Illinois State Geological Survey

(0828.1c)

September 22, 1927

With Cady and Van Pelt

Poli's mine $1\frac{1}{2}$ miles N. of Greenfield. New shaft
 sunk 1927. Van Pelt took log. Went up small
 tributary flowing S.

By A.H. Bell Date 1927Quadrangle GreenfieldCounty Greene Sec. 28 T. 11N R. 10W

FIELD NOTES
Illinois State Geological Survey

0827. 28
September 22, 1927

II Up second ravine on north of lane - entering pasture to **Polis Mine**

III Up ravine first get bed fireclay, gray - overlain by light buff shale 10' (6") thick

IV Up creek 1/2 mile - altitude by barometer same as top of **shaft** - probably too high

Sample #1



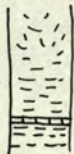
Drift 15-20'

Black fissile shale
Coal 9" 2" \pm Soft shale

2' \pm

Gray green sil. shale with hard sandy streak near top

Blue gray fireclay, see III above

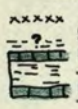


Up creek 200'

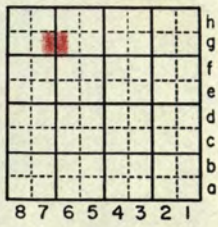
Shale, disturbed by ice
Black crystalline limestone 1-2"
Greenish gray shale F.v.

VII This coal that to be same as outcrop along creek bank near old mines SW. Polis shaft - + above encountered in shaft.

Sample #2



at bridge along main road



By G.H. Cady Date 1927

Quadrangle Greenfield

County Greene Sec. 27 T. 11N R. 10W

