



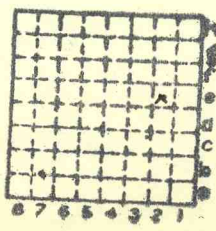
Form 180

ISGS Index No. 4133.

W.R. HANDKINS MINE

870.

L-45



Sec: 31

T.	9	M.
		S.
R.	4	E.
		W.

Index No.





Location and Elevation Data

Location: Exact Approximate
(Approximate only if no trace of record of original exists)

Location by.....

Date..... Notebook No..... Page.....

Looseleaf ref.....

Map files No.....

Description of Location

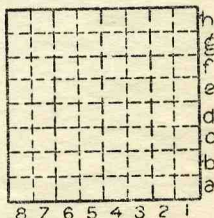
Position in sec., 1/4 sec., 40 acres

.....feet from North line

.....feet from East line

.....feet from South line

.....feet from West line



Sec. 31

T	W.
9	S.
R	E.
4	W.

Other description: L-45

Farm.....

No.....

Company W. R. Hand Kins
Mine

No.....

County No.....

Elevation.....ft.

By.....

Method: Level, transit, alidade, hand level

Elevation of.....

Height of point above ground.....

Date..... Notebook..... P.....

Looseleaf ref.....

Map files No.....

Description of item: (drill hole, mine, etc.) Slope Mine

County Williamson Quadrangle Marion Index No. 0831E2

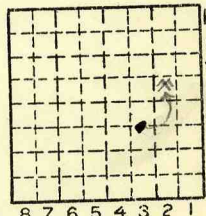
Location and Elevation Data

Location: Exact Approximate
(Approximate only if no trace of record of original exists)
Location by Ray McCluskey, State Mine Inspector
Date 2/42 Notebook No. Page
Looseleaf ref.
Map files No.

Description of Location

Position in sec., 1/4 sec., 40 acres

feet from North line
feet from East line
feet from South line
feet from West line



Sec. 31
T 9 S.
R 4 E.

SE 1/4

NE 1/4

Other description: L-45

Farm
No.
Company Motsinger & Harris Coal Co.
No.
County No.

1940 - 5322

Elevation ft.

By

Method: Level, transit, alidade, hand level

Elevation of

Height of point above ground

Date Notebook P.

Looseleaf ref.

Map files No.

Description of item: (drill hole, mine, etc.) Slope Mine

County Williamson Quadrangle Marion Index No. 0831 E2



Mine originally operated by: (1) **Motsinger & Harris**

Date
1936

Original name or number: #2
Illinois Coal Report **1936** p.

LATER OPERATORS

Date	Operator	Name or No.
1939	Red Dot Coal Co.	
2		
3		
4		
5		
6		
7		
8		
9		
10		
11		
12		
13		
14		

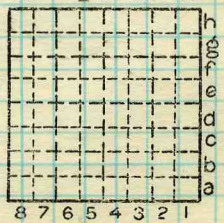
*Also owners #See ownership sheet

Railroad, Wagon, Strip, Idle, Abandoned **Slope Mine**

IDENTIFICATION

County No. _____
Coal Report No. L-45
Quad. **Marion**
County **Williamson**

Coal No. **5**



Sec. **31**

T.	9	N. S.
R.	4	E. W.

Index No.
0831

COAL MINE OPERATOR

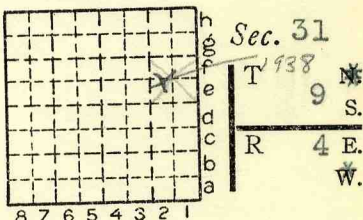
Location and Elevation Data

Location: Exact Approximate
(Approximate only if no trace of record of original exists)
Location by Dept Mines & Minerals
Date Notebook No. Page
Looseleaf ref.
Map files No.

Description of Location

Position in sec., 1/4 sec., 40 acres

feet from North line
feet from East line
feet from South line
feet from West line



Other description: SENE L-45
SESE (1939)

Farm
No.
Company Motsinger & Harris
No. #2
County No.

Elevation ft.

By

Method: Level, transit, alidade, hand level

Elevation of

Height of point above ground

Date Notebook P.

Looseleaf ref.

Map files No.

Description of item: (drill hole, mine, etc.) Slope Mine

County Williamson Quadrangle Marion Index No. 0831 41