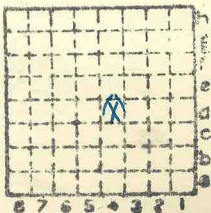




Form 180

Felless Mine

102



Sec. 34

T. 4 N. S.

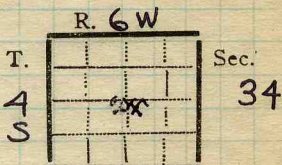
R. 6 E. W.

Index No.



Town, Surface alt., 444.3 ft.
 Local Authority, Depth to coal, 90 ft.
 Goddard Alt. top coal, 354. ft.
 Level: Auth., Skinner Thickness: Av. 72 in.
 NB 526 p. 69 # 728 Max. in., Min. in.
 Method, P.I.T.

R. R.,



Location: authority, Skinner

GEN'L COAL REPT.

(Show R. R.)

Draw # 17

Operator

102

Mine Name or No.

1925 Feller's Mine - on Robt. L. Marz place

Successor to Notes by Goddard (3-4-1925)
 Date 90 to coal: 72" thick;

Succeeded by
 Date

Succeeded by
 Date

PRODUCTION.

							U. S. No.
19							

Geol. Notes?

Coop. No.

Coal secs?

Analyses No.

Examined by

Ref.

Coal bed name: Local ?

LOCAL MINE

Survey No. ?

County Randolph

Index No. 0234 D-4

K. - ~~COAL SHIPPING~~ OR LOCAL COAL MINE. Abd



LOCATION AND ELEVATION

Location: side R. R.
By D.D. Skinner side R. R.

13-87-40A(758) side Highway No.
Not on top. map Location sheet

Elevation: Method, 1. Est. () ft. 444.3
2. Inst. (kind Alidade) ft.

By D.D. Skinner Data sheet

DEPTH

Authority Phillip Smith (per W.B. Goddard) To coal 118 ft.
Authority Rail to rail ft.
Top of coal above rail. (Est. Rule) ft.
To coal ft.

ALTITUDE OF TOP OF COAL

By estimated data
By instrumental data 326 ft.

Thickness 18'

Max. ? in. Min. in. Aver. in.

GEOLOGICAL DATA

Mine notes, date None

Coop No. Pyr. inv. Coal Ash inv.

CHEMICAL DATA

Analyses Face U. I. B. M. Others
Car U. I. B. M. Others
Org. Sulf U. I. B. M. Others
Ash fusion U. I. B. M. Others
Ash anal. U. I. B. M. Others
U. I. B. M. Others

Classification

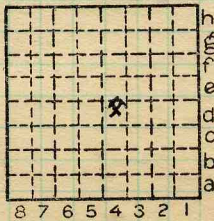
Misc. tests: Coking. Cleaning Boiler

Published descriptions:— None

~~Railroad~~, Wagon, ~~Abandoned~~

IDENTIFICATION

County No. 102 Coal No. ?
Quad. Coulterville Part 4
County Randolph



Sec. 34
T. 4 S.
R. 6 W.
Index No. 0234

COAL MINE LOCATION AND DATA