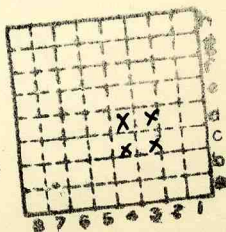




Form 180

SAM  
McCLEARY / SCOTT.  
W.

2 separate people



Sec. 9

T. 31 ~~8~~ N.

R. 3 ~~4~~ E.

Index No. /

✓ misc index 2571

Misc index 2450



Mine originally operated by: (1)

M. C. CLEARY. SCOTT  
CREATOR

Date 1895

Original name or number:

Illinois Coal Report \_\_\_\_\_ p. \_\_\_\_\_

LATER OPERATORS

Date Operator Name or No.

2 (Chas. Scott.) (Jack M. Neil)

3 J. C. Quade

4 these points are found on  
5 a RENZ MAP of STREATOR  
6 AS SEPARATE mines. There may  
7 have been a McCleary & Scott  
8 mine, however.

P. J. D. '69

7  
8  
9  
10  
11  
12  
13  
14

\* Also owners

# See ownership sheet

Railroad, Wagon, Idle, Abandoned

IDENTIFICATION

County No.

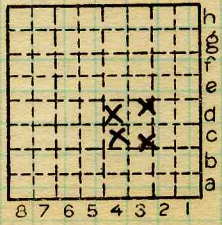
Coal No.

Quad. 80

Part 2

County

LASALLE



Sec. 9

T. 31 N.

R. 3 E.

Index No.

2809

COAL MINE OPERATOR