





Mine originally operated by: (1)

Unidentified.

Date

Original name or number:

Drift.

Illinois Coal Report

p.

LATER OPERATORS

Date

Operator

Name or No.

2

3

4

5

6

7

8

9

10

11

12

13

14

• Also owners

#See ownership sheet

Railroad, Wagon, Idle, Abandoned

IDENTIFICATION

County No.

Coal No.

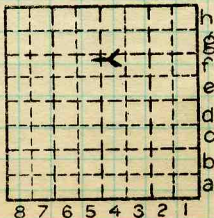


Part

Quad.

County

VERMILION.



Sec. 20

T. 19 N.

R. 12 E.

Index No.

COAL MINE OPERATOR

COUNTY NO 633

1820.F4