



Form 180

MO 791

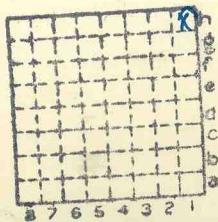
Ace ^{High} Ace High ce

L33

416

R: -F

HERRIN



Sec. 5

T.	2	N.S.
R.	4	P.W.

Index No.



Mine originally operated by: (1)

Date

L-33 Ace High Coal Co.

Original name or number:

Illinois Coal Report

p.

LATER OPERATORS

Date

Operator

Name or No.

- 2
- 3
- 4
- 5
- 6
- 7
- 8
- 9
- 10
- 11
- 12
- 13
- 14

* Also owners

#See ownership sheet

Railroad, Wagon, Idle, Abandoned SL

LOCAL MINE

IDENTIFICATION L-33

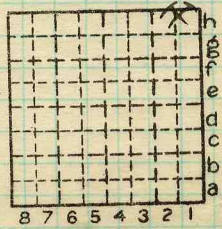
County No. 416

Coal No. 6

Quad. 246

Part

County ST. Clair



Sec. 5

T.	2	N.
R.	7	S.
		E.
		W.

Index No.

COAL MINE OPERATOR

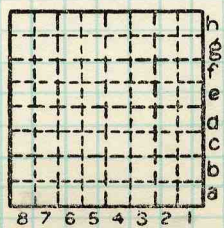
1505.H1

L-33

Ace High Coal Co. - a slope mine
east of Freeburg. It is near the
Reinheimer Mine and near the old
Rock Creek Mine (# 43 on map).

MI 789

By EFT Date 6/9/37
Quad. _____ Part _____
County St. Clair



Sec. 5
T. 2 N.
R. 7 E.
Index No. W.





LOCATION AND ELEVATION

Location: side R. R.
side R. R.
side Highway No.
on top. map Location sheet

Elevation: Method, 1. Est. () ft.
2. Inst. (kind PT) 428.2 ft.

By E.F.T. 13-87-41C Data sheet

DEPTH

Authority To coal 25 ft.
Authority Rail to rail ft.
Top of coal above rail. (Est. Rule) ft.
E.F.T. To coal 22 ft.

ALTITUDE OF TOP OF COAL

By estimated data
By instrumental data 406.2 ft.

Thickness

Max. 90 in. Min. 84 in. Aver. 87 in.

GEOLOGICAL DATA

Mine notes, date

Coop No. Pyr. inv. Coal Ash inv.

CHEMICAL DATA

Analyses Face U. I. B. M. Others
Car U. I. B. M. Others
Org. Sulf U. I. B. M. Others
Ash fusion U. I. B. M. Others
Ash anal. U. I. B. M. Others
U. I. B. M. Others

Classification

Misc. tests: Coking. Cleaning Boiler

Published descriptions:—

Railroad, Wagon, Idle, Abandoned SL

LOCAL MINE

IDENTIFICATION

County No. 416

Coal No. 6

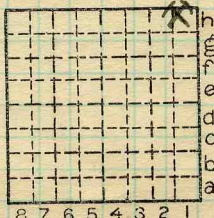


Part

Quad. 246

County

ST. CLAIR



Sec. 5

T. 2 N. S.

R. 7 E. W.

Index No.

1505.H1

COAL MINE LOCATION AND DATA