

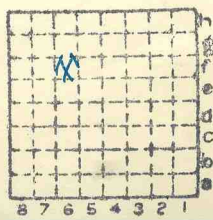


Form 180

Perry Co.

S-9
198

Mine Index 785



Sec.	25
T.	2 N.
R.	8 E.
Index No.	W.

Mine originally operated by: (1)

Date

Jos. Taylor

1882

Original name or number:

Illinois Coal Report

p.

LATER OPERATORS

Date	Operator	Name or No.
1882 - Jos Taylor		
2 1888	Con. C. C.	Alma
3 1896	Con. C. C.	Alma
4 1898	Hebanon C. & M. Assoc.	Carbon
5 1905	Int. C. & M. C.	
6 1906	" " "	Carbon
7 1919	W. Virginia C. & M. C.	"
8 1920	Perry C C	Carbon
9		
10		
11		
12		
13 Copied from old papers.		
14 J. D.		

*Also owners

#See ownership sheet

Railroad, Wagon, Strip, Idle, Abandoned

Shaft

B. & O. R.R.

IDENTIFICATION

County No. 198

Coal No.

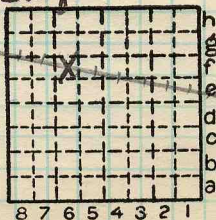
Coal Report No. 3-7

6

Quad. 226

County

ST. Clair



Sec. 25

T. 2 N. S.

R. 8 E. W.

Index No.

0325 F6



(Sheets)

COAL PRODUCTION

(Sheet)

No.	Period						Tons		
	Mo.	Day	Year	Mo.	Day	Year			
9	1	1	1936	12	31	1936	106	925	
9	1	1	1937	12	31	1937	34	787	

SUMMARIES

No.	to	No.			
1882		1936	3	530	255

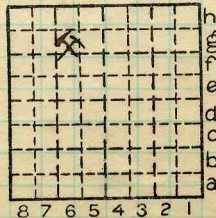
Railroad, Wagon, Idle, Abandoned

IDENTIFICATION

County No. 198 Coal No. 6

Quad. 226 Part

County St. Clair



Sec. 25

T. 2 N.
S.
R. 8 E.
W.

Index No.

0325.68



LOCATION AND ELEVATION

Location: SW side B&O side Highway No. R. R. R. R.

on top. map 226 Location sheet 13-87-42b

Elevation: Method, 1. Est. () ft.

2. Inst. (kind Plane Table) 557.2 ft.

By WBR (1930) Data sheet

DEPTH

Authority To coal 187 194 ft. Authority Rail to rail 187 ft. Top of coal above rail. (Est. Rule) ft. To coal ft.

ALTITUDE OF TOP OF COAL

By estimated data

By instrumental data 363.2 ft.

Thickness

Max. in. Min. in. Aver. 72 84 in.

GEOLOGICAL DATA

Mine notes, date 1/31/06 1930 84

Coop No. 6 Pyr. inv. Coal Ash inv.

CHEMICAL DATA

Analyses Face U. I. B. M. Others #1130 Car U. I. B. M. Others Org. Sulf U. I. B. M. Others Ash fusion U. I. B. M. Others Ash anal. U. I. B. M. Others U. I. B. M. Others

Classification

Misc. tests: Coking. Cleaning Boiler

Published descriptions:— Bull. 11 Folio 195

Railroad, Wagon, Idle, Abandoned

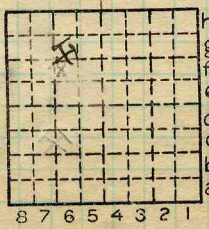
IDENTIFICATION

County No. 198

Coal No. 6

Part 3

Quad. Belleville County St. Clair



Sec. 25

T. 2 N. S. R. 8 E. W.

Index No. 0325.68

COAL MINE LOCATION AND DATA



COAL MINE NOTES.

COUNTY *St. Clair.* TOWN *O'Fallon*

MAP No. *0325*

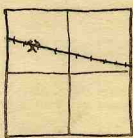
T. *2N* R. *8W*

S. *25 Center NW 1/4*

OPERATOR *International Coal Co.*

OFFICE *St Louis Mo.*

MINE *Carbon*



TIPPLE

ENGINES

BOILERS

DRUM

SHAFT

CAGE

HAULAGE

CARS

VENTILATION

COUNTY
COUNTY

DRAINAGE *dry.*

SPRINKLING

WORKING SYSTEM

MINING METHODS

SIZE OF ENTRIES—MAIN CROSS ROOM NECK

SIZE OF PILLARS—MAIN CROSS ROOM

SHAFT CHAIN BARRIER

AMOUNT OF TIMBERING SIZE

PROPORTION OF COAL UTILIZED

AMOUNT AND CHARACTER OF WASTE

ACREAGE OF COAL MINED

ACREAGE OF COAL REMAINING

PROPORTION OF MINE RUN AND SCREENED COAL

METHOD OF SIZING RESCREENED

SIZES

PER CENT

PROPORTION AND SIZE OF WASHED COAL

DAILY OUTPUT

UTILIZATION

GEN'L COAL REPT. 198

MARKETS

FREIGHT RATES

SELLING PRICES AT MINE

St. Clair *0325*

COAL LAND OWNED

LEASED

HELD IN FEE

COST OF LAND OWNED

LEASED

HELD IN FEE

ADDITIONAL NOTES



COAL MINE NOTES.
CONTINUED.

OPERATOR *International Coal Co.* MINE *Carbon*
 ENTRANCE NAME OF COAL BED #6
 ELEVATION *560 Bville topog.* THICKNESS OF COAL *72"*
 DEPTH TO FLOOR *200'* MAX. MIN. AV.
 ALTITUDE OF COAL *USED IN COOP. REPT. 1912.*

LOCATION OF SECTION *Face 21 W south side.*

No.	SECTION.	In.
1	<i>Coal</i>	<i>24</i>
2	<i>Sulphur Band</i>	<i>1/2</i>
3	<i>Coal</i>	<i>14</i>
4	<i>Sulphur.</i>	<i>3 2/2</i>
5	<i>Coal</i>	<i>3 1/2</i>
6	<i>Blue Band</i>	<i>57 1/2</i>
7	<i>Coal</i>	<i>59 1/2</i>
8	<i>Sulphur</i>	<i>61 1/2</i>
9	<i>Coal</i>	<i>62 1/2</i>
10		<i>80 1/2</i>
11		
12		
Tape		Total

SAMPLE No.

CAN No.

CONDITION

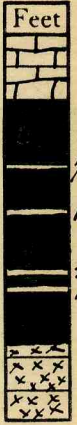
GROSS WEIGHT

TIME EXPOSED

NOT SHIPPED

NOT INCLUDED

SECTION



PHYSICAL PROPERTIES BY NUMBERS

ROOF *Conglomerate rock top. L.S. 28' no clod or slate*
between coal + roof.

FLOOR *Clay about 2 1/2' very gray.*

DIP

FAULTS, ETC.

GAS

COLLECTOR *Moses.*

REFERENCE *96 B. 15 P. 50*

DATE *1-31-06*

0325.6f.