



Form 180

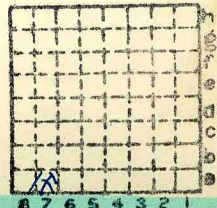
*See note p. 233 J.R. Ball NB 605
transfer to mine notes.*

C, W & F ec

m.i.#185
Mine Index



241



Sec. *8*
T. *12* N.
R. *6* S.
E.
W.
Index No.



Mine originally operated by: (1) *Royal Colliery Co.*
Date *1904.* *Virden*

Original name or number:
Illinois Coal Report _____ p.

LATER OPERATORS

Date Operator Name or No.

2 *1915. Chicago-Wilmington & Franklin.*

3

4

5

6

7

8

9

Abd. as "Royal Colliery C" per M.O. area
n. which is wrong. ASD 4/22
no, correct 1924 Royal No. 2 U 10/2001

10

11

12

13

14

* Also owners # See ownership sheet

Railroad, Wagon, Idle, Abandoned **SHIPPING MINE**

C.B.+Q, C+A, C+NW

IDENTIFICATION

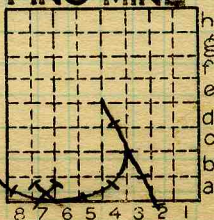
County No. *241*

Coal No.

Quad. *191*

Part *1*

County *Macoupin*



Sec. *8*

T. *12* N. S.

R. *6* E. W.

Index No. *✓*

COAL MINE OPERATOR

0/08.7a



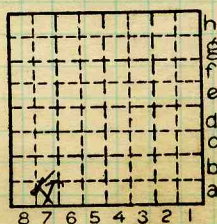
(Sheets) COAL PRODUCTION (Sheet)

Period						Tons			
Mo.	Day	Year	Mo.	Day	Year				
<i>Abd. 1926 & Scrapped</i>									

SUMMARIES						
No.	to	No.				

Railroad, Wagon, Idle, Abandoned
IDENTIFICATION

County No. *241* Coal No.
Quad. *191* Part *1*
County *Macoupin*



Sec. *8*
T. *12* N.
R. *6* W.
Index No.

COAL MINE—PRODUCTION

0108.7a



LOCATION AND ELEVATION

Location: side CNW + CB + Q R. R.
 side C + A. R. R.
 side Highway No.

on top. map Location sheet

Elevation: Method, 1. Est. () _____ ft.
 2. Inst. (kind PT) _____) 677.2 ft.

By PSM Data sheet

DEPTH

Authority To coal _____ ft.
 Authority Rail to rail _____ ft.
 Top of coal above rail. (Est. Rule) _____ ft.
 To coal 297 ft.

ALTITUDE OF TOP OF COAL

By estimated data _____
 By instrumental data _____ 380 ft.

Thickness
 Max. 86 in. Min. 54 in. Aver. 72 in.

GEOLOGICAL DATA

Mine notes, date _____

 Coop No. 185 Pyr. inv. Coal Ash inv.

CHEMICAL DATA

Analyses Face	U. I.	B. M. <u>81323-4-5-6</u>	Others <u># 738</u>
Car	U. I.	B. M.	Others
Org. Sulf	U. I.	B. M.	Others
Ash fusion	U. I.	B. M.	Others
Ash anal.	U. I.	B. M.	Others
	U. I.	B. M.	Others

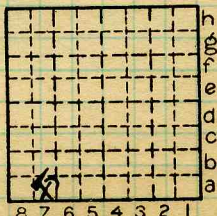
Classification _____
 Misc. tests: Coking. Cleaning Boiler

Published descriptions:—

Railroad, Wagon, Idle, Abandoned

IDENTIFICATION

County No. 241 Coal No.
 Quad. 191 Part 1
 County Macoupin



Sec. 8
 T. 12 N.
 R. 6 W.
 Index No.

0108-7a

COAL MINE LOCATION AND DATA

ILLINOIS COAL MINE NOTES

TOWN *Urdon* T. *12N* R. *6W* S. *8* SE $\frac{1}{4}$ SW $\frac{1}{4}$ SW $\frac{1}{4}$ *Macoupin* CO.
 COAL BED *5* DATE _____ COLLECTOR _____ *0108*
 OPERATOR *Royal Colliery Company* MINE No. *1.* *0108*
 HEAD OFFICE *Land Title Bldg. Philadelphia, Pa.*
 CAPACITY _____ MARKETS, FRT. _____
 ENTRANCE *306*
 CAGE _____ ENGINES _____
 _____ DRUM _____
 SCREENS _____ STORAGE _____

VENTILATION _____
 GAS, SOURCE _____
 COAL THICKNESS, AV. *70"* MAX. MIN. ELE. *Coal 367* *C&H RR 678* Mine *673* FT.

SECTION LOCATED

No.	In.	No.	In.
1		7	
2		8	
3		9	
4		10	
5		11	
6			

NOT SHIPPED NOT INCLUDED CAN SAMPLE

PHYSICAL PROPERTIES BY NOS.

USED IN GOOP. REPT. 1912.

ROOF _____ FLOOR _____
 DIP _____ CLEAT _____
 FAULTS, ETC. _____
 MACHINES _____
 HAULAGE _____ CARS _____
 DRAINAGE _____
 WORKING SYSTEM _____
 ENTRIES, MAIN CROSS ROOMS _____
 PILLARS, MAIN CROSS ROOM _____
 DRAWN _____ TIMBERS _____

Note also: Variation in coal, impurities, roof, structure.
 Collect records, analyses, fossils. Not: land values, etc.

0108
0108

Correspondence *County No. 241*



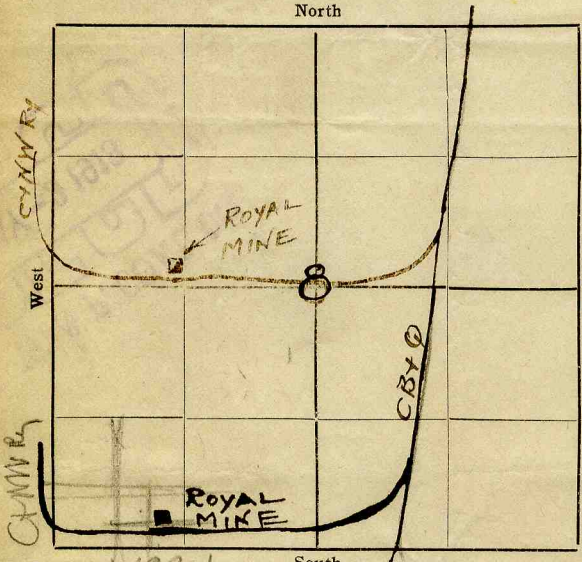
5441

(5529-500) John C. Moore Corporation, Rochester, N. Y. Binder and holes in leaves, each Patented 1908

Mine Name or No. Royal Mine Address Virden Ill.
 Operator Chicago Wilmington & Franklin Coal Co
 Main Office Address 407 Mc Cormick Bldg
Chicago Ill

Location of Mine:
 Township Name Virden County Macoupin
 Section No. 8 Township 12 Range 6 ^N/_S ^E/_W

Indicate location of mine and position of R. R. in plat of section below.



Kindly state number of feet from quarter section lines:

..... from N. line
 from E. line
 from S. line
 from W. line

Idle entire year 19 17 ^{Yes}/_{No}

Abandoned (date) 19.....

SHIPPING MINE

Served by MN 1921 C&O - C&A. and C&N W Ry

Surface landing is..... feet above sea level or about..... feet (above)
 (below) railroad station at Virden Ill..... (nearest town).

Depth to top of coal is..... feet.

Average thickness of coal is 7 feet 0 inches.

This mine being operated for the Royal Colliery Co.

Do not fill in below this line.

Coal Bed Name.....

Survey No.....

County Macoupin.....

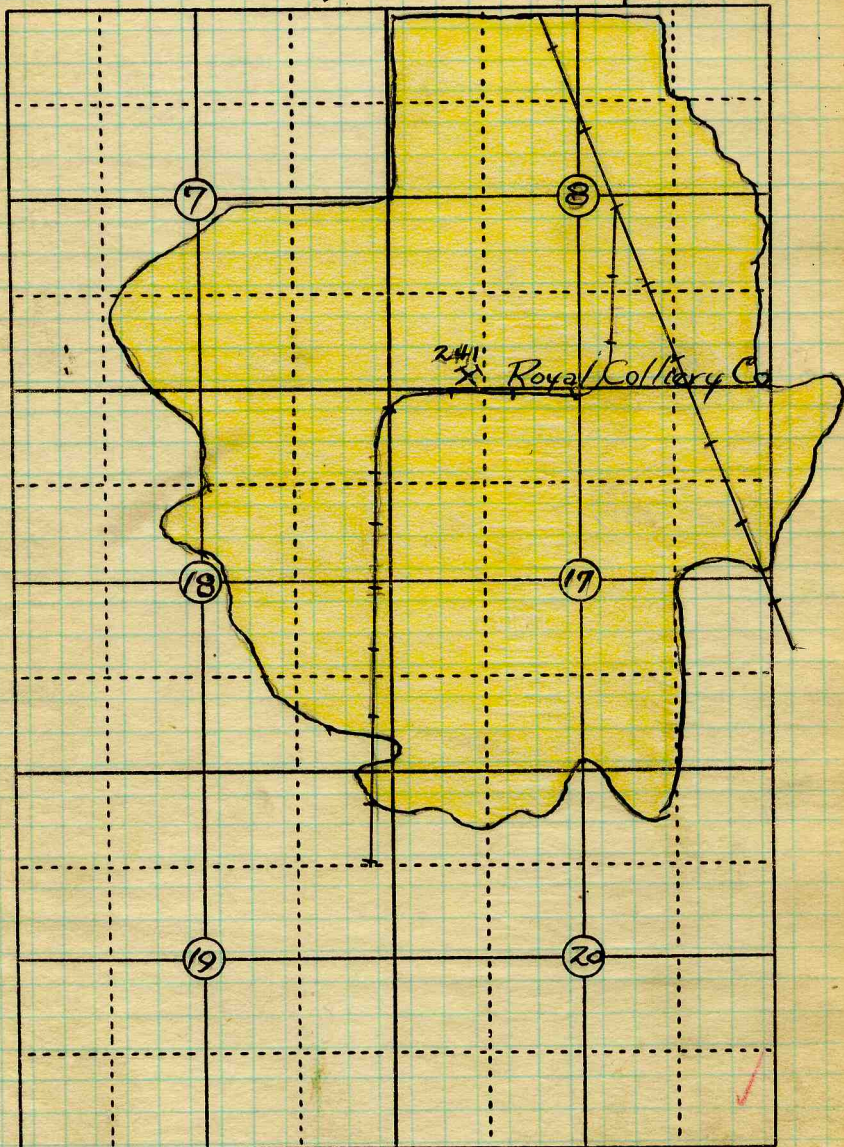
Index No. 0108.....

V-MINE LOCATION SHEET. 1241





Mine Map date 7-16-'18



T12N R6W.

Map

Date 7-16-'18

Operator

Royal Colliery Co

Name or No.

#241 County No. 241

County Macoupin.

Index No. 0108



COAL MINE NOTES.

0108

COUNTY *Macoupin* TOWN *Virdeen*

MAP No. **0408*

T. *12 N* R. *6 W*

S. *8 SE, SW, SW 4*

OPERATOR *Royal Colliery Co.*

OFFICE *Land Title Bldg. Phila. Pa.*

MINE *1. Royal.*

TIPPLE *Wood*

ENGINES

BOILERS

DRUM

SHAFT CAGE

HAULAGE *Mules*

CARS *Wood 2 tons capacity.*

VENTILATION *Fan, exhaust*

DRAINAGE

SPRINKLING

WORKING SYSTEM *Room + Pillar.*

MINING METHODS *Hand Work. Bottom coal shot from solid. then top coal shot down. 30" rail used*

Buildings brick.

SIZE OF ENTRIES—MAIN CROSS ROOM NECK

SIZE OF PILLARS—MAIN CROSS ROOM

SHAFT CHAIN BARRIER

AMOUNT OF TIMBERING SIZE

PROPORTION OF COAL UTILIZED

AMOUNT AND CHARACTER OF WASTE

ACREAGE OF COAL MINED

ACREAGE OF COAL REMAINING

PROPORTION OF MINE RUN AND SCREENED COAL

METHOD OF SIZING RESCREENED

SIZES

PER CENT

PROPORTION AND SIZE OF WASHED COAL *washer near tipple.*

DAILY OUTPUT *1200 tons.*

UTILIZATION *Domestic.*

MARKETS

USED IN COOP. REPT. 1912.

FREIGHT RATES

SELLING PRICES AT MINE

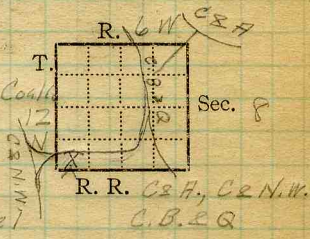
COAL LAND OWNED LEASED HELD IN FEE *0408*

COST OF LAND OWNED LEASED HELD IN FEE

ADDITIONAL NOTES *County #241*



Mine Name or No., *Royal*
 mile from
 Operator, 19*11* *Chicago, Wilmington & Franklin Coal*
 Operator, 19*20* *Royal Colliery Coal Co.*



Entrance, *shaft* Elev., *672.94* ft. { above, *sea level*
 Depth to **bottom** coal, *294.37* ft. Alt. *375.57*

SURFACE DATA.

- A. Topography, *Rolling* See
- B. Surficial materials. (1) Character, *Till*
- (2) Thickness, *No information*
- (3) Effect on mining and shaft-sinking, of former drainage lines, underground water strata, etc. *No information*

- C. Outcrops, (1) Character, See
- (2) Structure, See
- (3) Fossil horizons, See
- Collection No., See
- (4) Evidences of subsidence, See
- D. Note collection of mine maps, drill records and shaft logs.

See drill record sheet,

E. Notes on surrounding area,

See

Coal bed name: Local, Survey No. *6*

Collector, *Netzeband*

Mine, *Royal* Co. *Macoupin* Index No. *0108-11*

L.—SURFACE SHEET (Geol.) *County #241*



F. Thickness of rock above bed worked, *No information*
 (1) Important variations, *See*

G. Note presence of strata having important effect on mining, *See*

- Shale roof requires timbering* *See*
 (1) Position, *Above coal*
 (2) Character, *Dark grey to light grey, soft, massive*
 (3) Persistence, *In patches thruout mine*
 (4) Other workable coal beds, *No information* *See*

H. Cap rock, *Limestone*

- (1) Thickness, *No information*
 (2) Height above coal, *2" - Max. unknown.* *See XR*

I. Immediate roof, *Shale*

- (1) Thickness, *2" - 3 1/2"* (2) Contact with coal, *Clean, irregular.*
 (3) Horizontal variation, *Varies from black to white, fissil to massive* *See XR*

J. Draw slate. (1) Thickness, *None.* (2) Contacts

(3) Persistence,

K. Coal bed: Max. *86* Min. *54* Av. *72* inches

(1) Benches, *Two*
 (a) Position, *Above & below B.B.*

(b) Persistence, *Thruout mine.* *See*

(2) Bedded impurities, kind, position in benches, persistence, ease of separation. *B.B. grey shale*

(1/2" - 1")

(3) Irregularities in continuity of bed (due to deposition, erosion, or movement, *Slip* *See XR*

(a) Effect on mining, *See*

SECTION				
Ft.	In.	Name		Sym.
		<i>Limestone</i>		
		<i>10 Black sh.</i>		
		<i>6 Coal</i>		
		<i>1 Floor clay</i>		
		<i>1 Div = 4'</i>		

Collector, *Netzband*

Coal: Survey No. *6*

Mine, *Royal* Co. *Macoupin*

Index No. *0108-11*

M.—UNDERGROUND SHEET (Geol.)

Obiuty #241



K. (5) Physical character of coal in benches,

(a) Relative hardness, *About same as rest of Macoupin County*(b) Lustre, *Bright at top; rest dull with bright 1/6-1/8"*(c) Fracture, *Hackly to blocky*(d) Texture, *Laminated.* See

(6) Impurities in coal, other than bedded,

(a) Kind, *Pyrite bands, lenses & stringers, calcite or gypsum*(b) Position and persistence, *Most above B, B. $CaCO_3$ thru out bed vertically & laterally*(c) Rejected, *Large pyrite lenses* Ease of separation, *Break free.*

See

L. Floor: (1) Material, *Floor clay 15. below.*(2) Thickness, *1"-12"*

(3) Variation,

(4) Note character, condition, tendency to heave, relation to undercutting commercial value.

See XI.

(5) Clay sample No.

Location,

M. Stratigraphy,

(1) Fossiliferous horizons underground, *Floor clay - sigillaria, clod below first 15. - gastropods, brachiopods.*

Collection No.

Location,

N. Notes on effect of deep drilling in coal mine areas.

See

Collector, *Netzeband*Coal: Survey No. *6* Mine, *Royal* Co. *Macoupin*Index No. *0108.11*

N.—UNDERGROUND SHEET (Geol.)

County #241



Operator, *Chicago, Wilmington & Franklin Coal Co.* Date *Aug. 30, 1921*
 Mine, *Royal* Sec. *8* T. *12N* R. *6W*
 Location in mine, *Face of 6th E, 7th S, Main E*

GRAPHIC SECTION		DESCRIPTION OF SECTION (AT POINT SAMPLED)	
In.	No.	No. (Note character and thickness of roof)	Inches
		<i>Limestone shale 3"</i>	
		<i>1 coal</i>	<i>20 1/2</i>
		<i>2 charcoal</i>	<i>1</i>
		<i>3 coal</i>	<i>5</i>
		<i>4 pyrite lens</i>	<i>3/8</i>
		<i>5 coal</i>	<i>20 1/4</i>
		<i>6 gray shale BB</i>	<i>1 1/2</i>
		<i>7 coal</i>	<i>26 1/2</i>
		<i>85 3/4</i>	
(Note character and thickness of floor)			
Total thickness of coal.			<i>85 3/4</i>
Condition, <i>Dry, fresh.</i>		Time, <i>6 hr. 36 min.</i>	<i>36</i>
Wt. Gross, <i>26 lbs.</i>		Net, <i>lbs.</i>	
What Nos. shipped by Co.?			
Excluded from sample: No. <i>46</i>			
Sample represents <i>87 3/4 in.</i>			tons.
Impurities? How do they occur?			

(1 division=3 in.)

Sample No. *N-21-137* Can No. *07715* Lab. No. *81323*
 Collector, *Netzeband* Coal: Survey No.
 Mine, *Royal* Co. *Macoupin* Index No. *0108.11*



Operator, *Chicago, Wilmington, Franklin Coal Co.* Date *Aug. 30, 1921*
 Mine, *Royal* Sec. *8* T. *12 N* R. *6 W*
 Location in mine, *New 4th W off Main S.*

GRAPHIC SECTION		DESCRIPTION OF SECTION (AT POINT SAMPLED)	
In.	No.	No. (Note character and thickness of roof)	Inches
		<i>Limestone</i>	
		<i>Black, massive shale</i>	<i>30"</i>
		<i>1 Coal</i>	<i>10 3/4</i>
		<i>2 pyrite</i>	<i>1/8</i>
		<i>3 Coal</i>	<i>10</i>
		<i>4 gray shale</i>	<i>1 1/2</i>
		<i>5 Coal</i>	<i>7 1/4</i>
		<i>6 pyrite lens</i>	<i>3/4</i>
		<i>7 Coal</i>	<i>15 1/4</i>
		<i>8 charcoal lens</i>	<i>3/4</i>
		<i>9 coal</i>	<i>5 1/2</i>
		<i>10 gray shale BB</i>	<i>1</i>
		<i>11 coal</i>	<i>1</i>
		<i>12 charcoal lens</i>	<i>1/4</i>
		<i>13 coal</i>	<i>3 3/4</i>
		<i>14 pyrite lens</i>	<i>1/8</i>
		<i>15 coal</i>	<i>1 1/4</i>
		<i>16 pyrite lens</i>	<i>1/8</i>
		<i>17 coal</i>	<i>18 1/2</i>
		(Note character and thickness of floor)	
		<i>Total thickness of coal.</i>	<i>77 7/8</i>
		Condition, <i>Dry, fresh.</i> Time, <i>2 hr. 24 min.</i>	
		Wt. Gross, <i>20</i> lbs. Net, <i>4</i> lbs.	
		What Nos. shipped by Co.?	
		Excluded from sample: No. <i>4, 6, 10,</i>	
		Sample represents <i>74 5/8</i> in. tons.	
		Impurities? How do they occur?	

(1 division = 3 in.)

Sample No. *14-21-139* Can No. *17832* Lab. No. *81325*
 Collector, *Natzaband* Coal: Survey No. *6*
 Mine, *Royal* Co. *Macoupin* Index No. *0108.11*

County #241



Operator, *Chicago, Wilmington & Franklin Coal Co.* Date *Aug. 30, 1921*
 Mine, *Royal* Sec. *8* T. *12N/R.* *6W*
 Location in mine, *Face of 10th E, 5th N, Main E.*

GRAPHIC SECTION		DESCRIPTION OF SECTION (AT POINT SAMPLED)	
In.	No.	No. (Note character and thickness of roof)	Inches
		<i>Black shale</i>	
		<i>1 Coal (left as roof) App. 12"</i>	
		<i>2 Coal</i>	<i>4 1/2</i>
		<i>3 shale lens</i>	<i>3/8</i>
		<i>4 Coal</i>	<i>19 3/4</i>
		<i>5 shale & Pyrite band</i>	<i>1/2</i>
		<i>6 Coal</i>	<i>9 1/2</i>
		<i>7 pyrite lens</i>	<i>1/4</i>
		<i>8 Coal</i>	<i>3/4</i>
		<i>9 pyrite lens</i>	<i>1/8</i>
		<i>10 Coal</i>	<i>11 1/4</i>
		<i>11 gray shale BB.</i>	<i>3/4</i>
		<i>12 Coal</i>	<i>28 1/2</i>
		<i>Tape 75 1/2</i>	
		(Note character and thickness of floor)	
		Total thickness of coal.	<i>75 3/8</i>
		Condition, <i>Dry, fresh</i> Time, <i>4 hr. 18 min.</i>	<i>473</i>
		Wt. Gross, <i>28 lbs.</i> Net, <i>lbs.</i>	<i>10155</i> <i>19</i>
		What Nos. shipped by Co.?	
		Excluded from sample: No. <i>5, 5, 11</i>	
		Sample represents <i>73 3/4</i> in. tons.	
		Impurities? How do they occur?	

(1 division = 3 in.)

Sample No. *N-21-138* Can No. *7520* Lab. No. *81324*
 Collector, *Notzebend* Co. *Macoupin* Coal: Survey No. *6*
 Mine, *Royal* Index No. *0108:11*

R.—COAL SAMPLE SHEET.

County #241



INDEX

(36713-500-7-20)

K₃

Slip 3rd E off 7th S off Main E.
Trend 55° W. Dips W. Displacement 1 1/2'
Slip filled with clay gouge.

L₄

The upper 3-4" of floor clay is hard,
dark grey clay with many slips. The lower
part of the clay is light to medium grey and
fairly soft. In the 10th E off 3th N off Main E
two well preserved sigillaria fragments were
found.

Collector

Netzeband

Index No.

0108.11

X-1

EXTRA NO.

COUNTY #241

County

Macoupin



NDEX

(36713-500-7-20)

- G The roof conditions are variable in short distances.
- I Above the coal is a massive black sh. becoming dark to medium gray in a few places from 1" to 3' in thickness, with an average of 8" to 16" (crumbly, ^{upper 2-4" is})
- H Above this in some places is Ls. with an uneven lower contact. This Ls. lenses out laterally. Thickness 2" to -?
- G Above this Ls. is a shaly medium grained gray ss. This ss. lies above the Ls. when the latter is present or on a level with the lime when the lime is absent. Where both could be observed, the ss rests unconformably upon the Ls. projecting downward past the edges of the Ls. lenses into the coal as far as 4' in long rolls 30' to 40' wide and extending from several entries. Thickness 2' to 4'
- Above the ss is a sandy sh. medium gray with darker micaceous partings, sometimes crossbedded. It is from 2' to 3½' in thickness.
- Above the shale is another Ls. This was not broken. The ss, in places, grades into the sandy shale.

Appearances seem to indicate that the Ls. was deposited on an erosional surface. This was subjected to erosion and in places was completely eroded away. The ss was deposited on the eroded surface. The ss, in places, grades into the sandy shale above it.

A fall near the bottom reveals the limestone above the sandy shale (The 2nd above the coal in places) which is about 15' in thickness. The lower 4' compact and fossiliferous, the center is shaly, the top 1' cherty. This is overlain by a gray shale.

Collector Thurston, County # 241

Index No. 0108.11

X-2

EXTRA NO. 2

County Macoupin