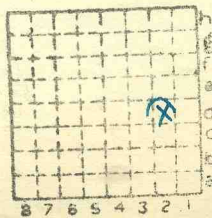


ISGS Mine Index# 3309

J. Yates CC.

L 22

441



Sec. 23  
 T. 9 N  
 S.  
 R. 7 E  
 W.  
 Index No.

✓

Mine originally operated by: (1)



James Yates Coal Co.

Date

1936

Original name or number: #1  
Illinois Coal Report 1936 p.

LATER OPERATORS

Date	Operator	Name or No.
2		
3		
4		
5		
6		
7		
8		
9		
10		
11		
12		
13		
14		

\*Also owners

#See ownership sheet

Railroad, Wagon, Strip, Idle, Abandoned

Slope Mine

IDENTIFICATION

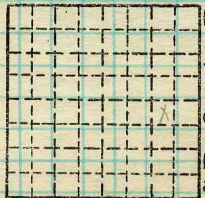
County No. 771

Coal No. 5

Coal Report No. L-22

Quad. Equality

County Saline



Sec. 23

T. 9 S. \*

R. 7 E. W.

Index No.

0723 d2

COAL MINE OPERATOR

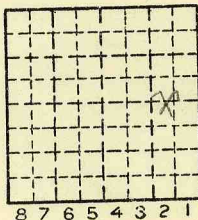
Location and Elevation Data

Location: Exact Approximate
(Approximate only if no trace of record of original exists)
Location by E.F.T. (In field)
Date Notebook No. Page
Looseleaf ref.
Map files No.

Description of Location

Position in sec., 1/4 sec., 40 acres

feet from North line
feet from East line
feet from South line
feet from West line



Sec. 23
T 9 S.
R 7 E.
W.

Other description:

Farm No.
Company James Yates Coal Co.
No. #1
County No. 771

422

Elevation 500 ft.
By EFT

Method: Level, transit, alidade, hand level
TM

Elevation of
Height of point above ground
Date Notebook P.
Looseleaf ref.

Map files No.
Description of item: (drill hole, mine, etc.) Slope Mine

56° 47' 51"

County Saline Quadrangle Equality Index No. 0723 d2