



Form 180

*See also
20-1N-8W.*

R .F

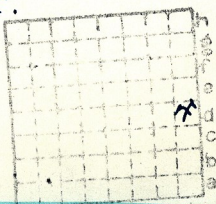
Patterson Hardng Co.

Mine index 7B2

Co. # 219

Mine Index

L 14



Sec. **27**

T. **1** ~~S.~~

R. **8** ~~E.~~
W.

Index No.



Mine originally operated by: (1)

Date

L-14 (1938 Coal Rpt.)

Original name or number:

Illinois Coal Report

p.

LATER OPERATORS

Date

Operator

Name or No.

2 1930 Patterson-Harding Coal Co

3

4

5

6

7

8

9

10

11

12

13

14

No 1939 Prod.

* Also owners

#See ownership sheet

Railroad, Wagon, Idle, Abandoned Shaft Mine

LOCAL MINE IDENTIFICATION

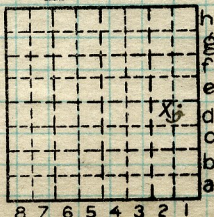
County No. 219

Coal No. 6

Quad. Belleville

Part 9

County St. Clair



Sec. 27

T. 1

N. 5

R. 8

W. 6

Index No.

0727 1d

COAL MINE OPERATOR

L



(Sheets) COAL PRODUCTION (Sheet)

Period						Tons	
Mo.	Day	Year	Mo.	Day	Year		
1	1	1930	12	31	1930	12	000
		1931				13	400
		1932					
		1933					
		1934				16	750
		1935				22	484

SUMMARIES

No. to No.

Railroad, Wagon, Idle, Abandoned

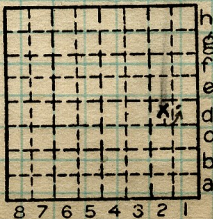
IDENTIFICATION

LOCAL MINE

County No. 219 Coal No. 6

Quad. Belleville Part 9

County St Clair



Sec. 27

T. N.
R. 8 W.

Index No.

0727-1d



LOCATION AND ELEVATION

Location: side R. R.
 side R. R.

S side Highway No. 15

on top. map 226 Location sheet 13-87-42b

Elevation: Method, 1. Est. () ft.

2. Inst. (kind Plane Table) 506.1 ft.

By W. B. Roe 10-15-30 Data sheet

DEPTH

Authority	To coal	<u>65</u>	ft.
Authority	Rail to rail		ft.
	Top of coal above rail. (Est. Rule)		ft.
	To coal		ft.

ALTITUDE OF TOP OF COAL

By estimated data _____

By instrumental data _____

Thickness

Max. _____ in. Min. _____ in. Aver. 72 in.

GEOLOGICAL DATA

Mine notes, date _____

Coop No. _____ Pyr. inv. _____ Coal Ash inv. _____

CHEMICAL DATA

Analyses Face	U. I.	B. M.	Others
Car	U. I.	B. M.	Others
Org. Sulf	U. I.	B. M.	Others
Ash fusion	U. I.	B. M.	Others
Ash anal.	U. I.	B. M.	Others
	U. I.	B. M.	Others

Classification

Misc. tests: Coking. _____ Cleaning _____ Boiler _____

Published descriptions:—

Railroad, Wagon, Idle, Abandoned Shaft

LOCAL MINE IDENTIFICATION

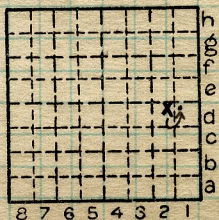
County No. 219

Coal No. 6

Quad. BELLEVILLE

Part 9

County St Clair



Sec. 27

T. 1 N.

R. 8 W.

Index No.

0727 1a

COAL MINE LOCATION AND DATA