

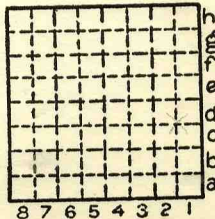
ILLINOIS GEOLOGICAL SURVEY, URBANA

From: Coal Report, 1882, p. 91

"N. C. Hawley's mine is four miles south of Pekin, on the P., D. & E. railroad. His market is all to the south. Ventilation is good in this mine; a thirty-horse power engine is in use, and there are three openings -- the hoisting shaft, air shaft, and pump shaft. For four months during the last winter miners were paid four and a half cents per bushel for mining, and during the remainder of the year four cents a bushel. There are about three hundred and fifty yards of iron track in the place, but the coal which is being worked now is four hundred yards from the bottom of the shaft, and is pushed out in ten-bushel cars by hand, at a cost of half a cent per bushel. Peter Daley was killed in this mine last December, by a fall of slate and coal."

*mi 6808
loc from pl 33
cc - 2005*

By.....Date.....
 Quad.....Part.....
 County Tazewell.....



Sec. 23

T. 24	(N)
	S.
R. 5	(E)
	(W)