

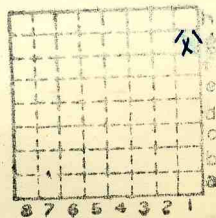


Form 180

Athens - Dawson cc, 1  
(Athens file #2)

index 2939

✓



Sec.	1
T.	17
R.	6
Index No.	

N.  
S.  
W.



Location and Elevation Data

Location: Exact ~~Approximate~~

(Approximate only if no trace or record of original exists)

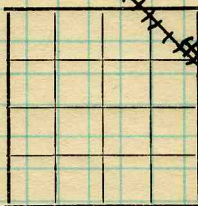
Location by W. B. Roe  
Date 4-29-31 Notebook No. 602 Page 23-200

Looseleaf ref. \_\_\_\_\_  
Map files No. 12-83-136

Description of location

Position in sec., 1/4 sec., 40 acres

\_\_\_\_\_ feet from North line  
\_\_\_\_\_ feet from East line  
\_\_\_\_\_ feet from South line  
\_\_\_\_\_ feet from West line



Sec. 1  
T. 17 N.  
R. 6 W.

Other description: \_\_\_\_\_  
Farm \_\_\_\_\_  
No. \_\_\_\_\_

Company Arkens Mining Co

No. 2  
County No. \_\_\_\_\_

390' to 75" of #5 coal - Folio 188 - p. 84

Elev. 409 <sup>*elev on summit as 608.8*</sup> Elevation 608.8 ft.  
By W. B. Roe

Method: Level, transit, alidade, hand level  
Alidade

Elevation of Ground surface

Height of point above ground 0

Date 4-29-31 Notebook 602 Page 23-200

Looseleaf ref. \_\_\_\_\_  
Map files No. 12-83-136

Description of item: (drill hole, mine, etc.) Mine shaft (abd)  
**SHIPPING MINE**

County Menard Quadrangle Springfield Index No. 0901  
(45576-1M-10-30) OK KC