



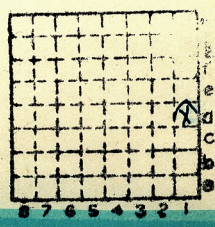
Form 180

R - F

Colby M.

25.

Mine Index - 3546



Sec.	11
T.	1
R.	9
Index No.	

N. S. E. W.





LOCATION AND ELEVATION

Location: **S** side **Ill. Central** R. R.
 side R. R.
 side Highway No.

on top. map Location sheet **13 87 44b**

Elevation: Method, 1. Est. () ft.

2. Inst. (kind **Plane table**) **574.0** ft.

By **WBR NB 599 p.31 #416** Data sheet

DEPTH **from map 4107**

Authority **WBR** **{ 196' EL** To coal **160** ft.

Authority *shaft* **{ 2160' SL** Rail to rail ft.

Top of coal above rail. (Est. Rule) ft.

To coal ft.

ALTITUDE OF TOP OF COAL

By estimated data _____

By instrumental data _____

414 ft.

Thickness

Max. in. Min. in. Aver. in.

GEOLOGICAL DATA

Mine notes, date _____

Coop No. Pyr. inv. Coal Ash inv.

CHEMICAL DATA

Analyses Face	U. I.	B. M.	Others
Car	U. I.	B. M.	Others
Org. Sulf	U. I.	B. M.	Others
Ash fusion	U. I.	B. M.	Others
Ash anal.	U. I.	B. M.	Others
	U. I.	B. M.	Others

Classification

Misc. tests: Coking. Cleaning Boiler

Published descriptions:—

Railroad, Wagon, Idle, Abandoned

IDENTIFICATION

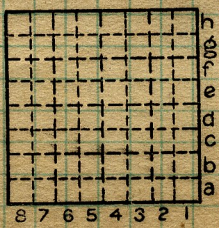
County No. **25**

Coal No. **6**

Quad. **225**

Part

County **St Clair**



Sec. **11**

T. **1** N.
S
 R. **9** W.

Index No.
0611-D1

COAL MINE LOCATION AND DATA