



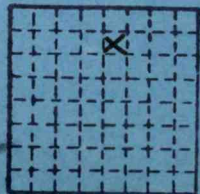
Form 180 Blue

Black Diamond CC

MI4103

1220

L-46



h	Sec.	26	
g			
f	T.	9	N.
e		S.	
d	R.	4	E.
c			
b	Index No.		W.
a		0826	





Mine originally operated by: (1) Black Diamond Coal Co.

Date

1936 L-46

(1930)

Original name or number:

Illinois Coal Report 1936 p.

LATER OPERATORS

Date	Operator	Name or No.
2		
3		
4		
5		
6		
7		
8		
9		
10		
11		
12		
13		
14		

*Also owners

#See ownership sheet

Railroad, Wagon, Strip, Idle, Abandoned

Drift Mine

IDENTIFICATION

County No. ~~1320~~ 1320

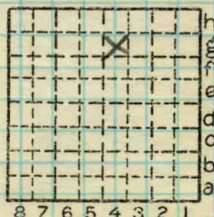
Coal No. 6

Coal Report No. L-46



Quad. Harrisburg

County Williamson



Sec. 26

T. 9

R. 4

Index No.

0826

COAL MINE OPERATOR