



Form 180 Blue

no data given - So not find tracing

Brown Coal Co.

.
.
.
.
.
.
.
.
.
.
.
.
.
.
.
.
.
.
.
.

Sec. *33 D6*

T. <i>19</i>	N.
R. <i>11</i>	W.
Index No.	

Mine index 3744



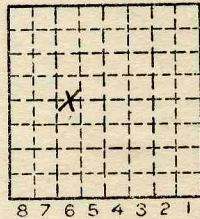
Location and Elevation Data

Location: Exact Approximate
(Approximate only if no trace of record of original exists)
Location by Abd Mines Book
Date Notebook No. Page
Looseleaf ref.
Map files No.

Description of Location

Position in sec., 1/4 sec., 40 acres

feet from North line
feet from East line
feet from South line
feet from West line



Sec. 33
T 19 N.
R 11 W.

Other description:
Farm
No.
Company Braun Coal
No.
County No. 297

Elevation ft.
By
Method: Level, transit, alidade, hand level

Elevation of
Height of point above ground
Date Notebook P.
Looseleaf ref.

Map files No.
Description of item: Drift NOT USED N.O.M.
ABD
County VERMILION Quadrangle 149 Index No. 1733 D6



Mine originally operated by: (1)

Brown Coal Co.

Date

1933

?

#2

Original name or number:

Drift

Illinois Coal Report

p.

LATER OPERATORS

Date	Operator	Name or No.
2 1935	Brown Strip Co.	?
3		
4		
5		
6		
7		
8		
9		
10		
11		
12		
13		
14		

* Also owners

#See ownership sheet

Railroad, Wagon, Idle, Abandoned

LOCAL MINE

IDENTIFICATION

County No.

Coal No.

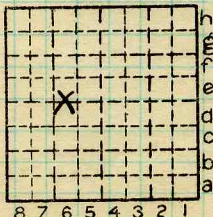


Part

Quad.

County

VERMILION.



Sec. 33

T. 19 N. S.

R. 11 E. W.

Index No.

COAL MINE OPERATOR