



Form 180

R. F

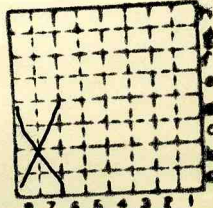
SPRINGFIELD

(Macon County Coal Co #1 after 1918)

Manufactures & Consumers
Coal Co. #1

More index #42

S-1



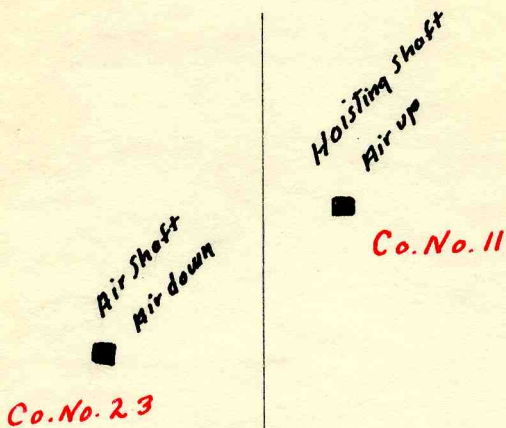
Sec. 14

T. 16 N. S.

R. 2 E. W.

Index No.

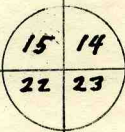
ILLINOIS GEOLOGICAL SURVEY, URBANA



Hoisting & Air Shafts
of Macon County
Coal Co.

Scale = 1" = 200'

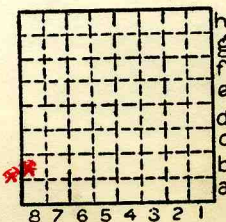
From mine map in I. G. S.
files. Map No. 4103, M33 i
5.1-1 (sheet 1)



By K. E. Clegg Date 2-24-60

Quad. Decatur Part.

County Macon



Sec. 14-15

T.	<u>16</u> N.
R.	<u>2</u> E.

See ISGS Map files
4103,
15.1-1 (2 sheets)
M33 15.1-2 (8 sheets)

Miscellaneous Data on Mines at Decatur, IL,
from Annual "Coal Reports" (JAS 12/27/79)

- 1882..... No mines listed in Macon County
- 1883 Decatur Coal Co. reported as new - table shows "10 acres worked" 612' depth 4.4' of coal
- 1886 Decatur Coal Co. No. 2 reported Production - "Sunk for escapement shaft"
- 1887 Decatur Coal Co. No. 1 Same order of magni-
Decatur Coal Co. No. 2 tude of production
- 1903 Decatur Coal Co. No. 1
Decatur Coal Co. No. 2
Manufacturers and Consumers Coal Co. (NEW)
has completed sinking a shaft on ICRR "1
mile N. of Sangamon River"
600 feet deep - #5 Coal 4' thick (no pro-
duction listed)
- 1904 All 3 of above mines (1903) at Decatur
listed production
- 1915 Decatur Coal Co. No. 1 Abandoned - (no pro-
duction listed)
- 1918 Macon County Coal Co. (appeared w/o comment -
Mfgs. & Cons. CC. not listed - presumed name
change) - confirmed on page 146 Coop. Bull.
26
- Decatur Coal Co. No. 2
- 1919-1924 Ditto 1918
- 1925 Macon County Coal Co. No. 1
- 1926 Ditto

- 1927 Macon County Coal Co. No. 2 Abandoned
 only "Macon County Coal Co." listed
- 1946 Macon County Coal Co.
- 1947 Ditto - produced less than 2,000 tons -
 Prob. abandoned this year (not listed in
 1948)



1078

Form Q. R. 154

See ISGS Map Files

4103.M33

2 5,1-1 sheet 2

For map showing profile
along entry in mine and
areas backfilled by Wabash
Railroad.



Town, **Decatur**
 Local Authority,

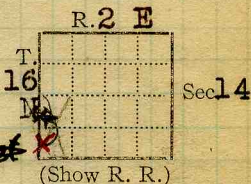
Surface alt., **640** ft.
 Depth to coal, **560** ft.
 Alt. top coal, **80** ft.
 Thickness: Av. **51?** in.
 Max. in., Min. in.

Level: Auth., **Mine notes**

log-94

Method,

R. R., **9 C.; P.C. + St. S.**
W.; cin. Ind. + West.



Location: authority, **Mine notes**

~~W., cin. Ind. + West~~

(Show R. R.)

Operator

Mine Name or No.

new
 19 **1904** **Manufacturers & Consumers Coal Co. No. 1**

Successor to **Macon Co. Coal Co.** # ~~1~~ ~~NOE~~

Date **Cen. Ill. Coal Bureau see map in files 28-31**

Succeeded by **700 S. Main St.**

Date

Succeeded by

Date

Coal Rpt. #5-1

PRODUCTION.

abn'd - 1948

Illinois

U. S. No.

Year	Production	U. S. No.
1917	180 105	
26	1200	
1931	82274	1930 #4

Geol. Notes? *yes*

Coop. No.

Coal secs.? *4*

Analyses No. **5200-5201 5202 ; 81545, 6, 7 - 8**

15699

Examined by

Ref.

Coal bed name: Local

Survey No. **5**

County **Macon**

Index No. **1114.01**

K.—ACTIVE SHIPPING ~~OR LOCAL~~ COAL MINE.



(Sheets) COAL PRODUCTION (Sheet)

No.	Period						Tons	
	Mo.	Day	Year	Mo.	Day	Year		
			1930			1931	82	274
			1931			1932	77	938
			1932			1933	146	523
			1933			1934	164	401
			1934			1935	174	859
1	1	1	1936	12	31	1936	162	283
1	1	1	1937	12	31	1937	145	289
S-1	1	1	1938	12	31	1938	122	328
						1939	89	846
						1940	105	687
						1941	53	183
						1942		
						1943	46	241
						1944	38	167
						1945	29	683

Data in Contract 1932

#1

(over)

SUMMARIES

No.	to	No.			
1884		1930	2	529	448

SHIPPING MINE

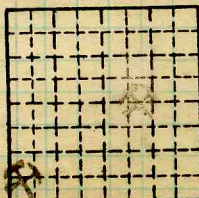
Railroad, Wagon, Idle, Abandoned

1943 IDENTIFICATION

County No. Coal No. 5

Quad. Decatur Part 4

County Macon



Sec. 14
T. 16 N.
R. 2 E.
Index No. 2 Wx

8 7 6 5 4 3 2 1 1114 A3

COAL MINE—PRODUCTION



(Sheets) COAL PRODUCTION (Sheet)

		Period						Tons		
		Mo.	Day	Year	Mo.	Day	Year			
Total tons		1884 to Dec. 30 1930						2	529	448
	1	1		1931	12	31	1931	82	274	
	1	1		1932	12	31	1932	77	938	
	1	1		1933	12	31	1933	146	523	
	1	1		1934	12	31	1934	164	401	
	1	1		1935	12	31	1935	174	859	
	1	1		1936	12	31	1936	162	283	
	1	1		1937	12	31	1937	145	289	
	1	1		1938	12	31	1938	122	328	
	1	1		1938	12	31	1939	89	846	
	1	1		1940	12	31	1940	105	687	
S-1	1	1		1941	12	31	1941	53	183	
				1942						
				1943				46	241	
				1944				38	167	
				1945				29	683	
				1946				21	769	
				1947				1	539	
				1948				no prod.		

S-1) Macon County Coal Co.
 " " " "

SUMMARIES

No. to No.

Railroad, Wagon, Strip, Idle, Abandoned

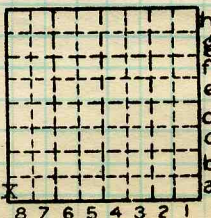
S-1 IDENTIFICATION

County No. _____ Coal No. _____

Coal Report No. S-1

Quad. Decatur

County Macon



Sec. 14

T. 16 N.
 S.
 R. 2 E.
 W.

Index No.

1114A

COAL MINE—PRODUCTION

ILLINOIS GEOLOGICAL SURVEY, URBANA





LOCATION AND ELEVATION

Location: side R. R.
 side R. R.
 side Highway No.

on top. map Location sheet

Elevation: Method, 1. Est. () _____ ft.
 2. Inst. (kind _____) _____ ft.

By	Data sheet
DEPTH	
Authority	To coal <u>561</u> ft.
Authority	Rail to rail <u>624</u> ft.
	Top of coal above rail. (Est. Rule) _____ ft.
	To coal <u>624</u> ft.

ALTITUDE OF TOP OF COAL

By estimated data _____ ft.
 By instrumental data _____ ft.

Thickness
 Max. in. Min. in. Aver. 52 in.

GEOLOGICAL DATA

Mine notes, date 1921 _____

 Coop No. Pyr. inv. Coal Ash inv.

CHEMICAL DATA

Analyses Face	U. I. 3	B. M. 4	Others
Car	U. I.	B. M.	Others
Org. Sulf	U. I.	B. M.	Others
Ash fusion	U. I.	B. M.	Others
Ash anal.	U. I.	B. M.	Others
#42	U. I.	B. M.	Others

Classification R.I. 122 U.C.I. 144

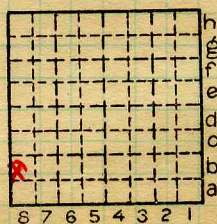
Misc. tests: Coking. Cleaning Boiler

Published descriptions:—

Railroad, Wagon, Idle, Abandoned

SHIPPING MINE
 IDENTIFICATION

County No. Coal No. **5**
 Part **4**
 Quad. **Decatur**
 County **Macon**



Sec. **14**
 T. **16** N.
 R. **2** E.
 Index No.

1114-86
A8

COAL MINE LOCATION AND DATA

See
Extra
Sheet
No.

Entrance *shaft*
 Kind of tippie *Wood*
 Motive power for hoist *Steam.*
 Source if electrical
 Kind of hoist (cage, skip, etc.) *Cage 1 1/2 ton cars.*
 Kind of haulage *Gather with mules, gasoline road motors on return*
 Mining equipment *Longwall machine. (Longwall advancing) 1 air*
 Note any features of the equipment that are of special interest

SURFACE DATA.

A. Topography, *Flat generally, rolling, locally, due to Sangamon River.*
 B. Surficial materials, (1) Character, *Till.*
 (2) Thickness, *No information.* (3) Effect on mining and shaft-sinking, of
 former drainage lines, underground water strata, etc. *No information.*

C. Outcrops, (1) Character,
 (2) Structure,
 (3) Fossil horizons,
 Collection No.,
 (4) Evidences of subsidence,
 D. Note collection of mine maps, drill records and shaft logs.

See drill record sheet,

E. Notes on surrounding area,

Coal bed name: Local,

Collector, *Netze hard*Mine, *Macon County*Co. *Macon*Survey No. Index No. *1114-01*

L.—SURFACE SHEET (Geol.)



K. (5) Physical character of coal in benches,

- (a) Relative hardness, *Same as Springfield district.*
 [becomes more prominent at bottom]
- (b) Lustre, *Upper 15" dull, rest dull $\frac{1}{2}$ - $\frac{3}{4}$, bright $\frac{1}{8}$ - $\frac{1}{4}$ bright*
- (c) Fracture, *Hackly*
- (d) Texture, *Laminated* See
- (6) Impurities in coal, other than bedded,
- (a) Kind, *Pyrite lenses & f.p., a few calcite f.p. ($\frac{1}{32}$ & less)*
- (b) Position and persistence, *Throughout coal vertically & laterally*
- (c) Rejected, *Pyrite lenses above $\frac{1}{2}$ "* Ease of separation, *Break free.* See

L. Floor: (1) Material, *Floor clay* *ls. below.*(2) Thickness, *8-9' (App).*

(3) Variation,

(4) Note character, condition, tendency to heave, relation to undercutting commercial value. *Soft, light grey; heaves badly; undercut**in the floor clay.**Floor clay contains too much $CaCO_3$ for firebrick.*

See

(5) Clay sample No.

Location,

M. Stratigraphy,

(1) Fossiliferous horizons underground, *limestone above coal*

Collection No.

Location,

N. Notes on effect of deep drilling in coal mine areas.

See

Collector, *Natzband*Coal: Survey No. Mine, *Macon County* Co. *Macon*Index No. *1114.01*



F. Thickness of rock above bed worked, *No information*
 (1) Important variations,

See

G. Note presence of strata having important effect on mining,

beaves

The limestone has to be shot to raise chimneys when floor

See

- (1) Position, *Above black shale.*
- (2) Character, *Very hard, compact, brown, fossiliferous lis.*
- (3) Persistence, *Through mine.*
- (4) Other workable coal beds, *No information*

See

H. Cap rock, *Limestone (Band rock)*

- (1) Thickness, *2"-16"*
- (2) Height above coal, *14"-24"*

See XI

I. Immediate roof, *Black shale*

- (1) Thickness, *14"-24"* (2) Contact with coal,

- (3) Horizontal variation, *No variation*

See XI

J. Draw slate. (1) Thickness, (2) Contacts

Black shale if only few concretions are present.

- (3) Persistence, *Only where concretions*

K. Coal bed: Max. *60* Min. *48* Av. *54* inches

- (1) Benches, *None.*
- (a) Position,

- (b) Persistence,

See

- (2) Bedded impurities, kind, position in benches, persistence, ease of separation. *There are a few*

small charcoal lenses in the coal observed

See

- (3) Irregularities in continuity of bed (due to deposition, erosion, or movement, *Clay horseshoes*

See

- (a) Effect on mining, *Expensive to mine thru* $\frac{1 \text{ Dir}}{4'}$

See

SECTION				
Ft.	In.	Name		Sym.
16		S.S.		
8'	?	Sh		
1	4	Lis		
2		Black sh.		
4	6	Coal		
9		Floorday		
1		Dir		

Collector, *Netzaband*
 Mine, *Macon County* Co. *Macon*
 M.—UNDERGROUND SHEET (Geol.)

Coal: Survey No. *5*
 Index No. *114.01*



INDEX

(36713-500-7-20)

- I The immediate roof is from 14" to 24" of massive black shale, somewhat fossiliferous, fossiliferous, numerous slickenoides. Limestone concretions numerous.
- H above this is a Ls. called "band rock" by the miners, compact, gray fossiliferous. This has to be taken down in the entries as the floor heaves and there would be insufficient height to get Motor + cars in other wise, upper and lower contacts regular. This is crystalline.
- F above the Ls. is a medium gray shale smooth with 2 fractures vertical at right angles, and one horizontal. These are dolomite lenses and bands of interveals of from 8" to 12" from bottom to top. There is probably some limonite in these lenses, this sh. weathers into rectangular to rhomboidal blocks, 1' to 10'.
- A above this shale is sandstone, fine grained, medium gray, massive, somewhat shaly, micaceous, about 16' in thickness. This has an uneven contact with the shale below it. Probably was deposited on an erosional surface.
- G The Ls. is taken down to give head room. The shale makes a bad roof continually falling in small amounts. Loose all over. Not timbered. Because of fracture; timber would hold only shale immediately above timber. Would have to have sealed roof and concrete.
- Where this has all fallen, the ss. makes a good roof.

Collector Thurston

Index No. 1115.01

EXTRA NO. 1

County Macon



INDEX

- G Soapstone over the cap rock gives considerable ^{trouble} where st. ~~ex~~ & cap rock are thin or absent. Falls in old entries up to 15 ft. This bed closely resembles that over Coal City (Grundy) Coal.
- H Lis. cap rock med. gray, fossils common incl. small fusulina. This bed ranges from a feather edge to about 2' in thickness, & shows max. variation in short distances. Where under 6" it is more clayey, & in places crowded with shell fragments. Where thick the rock shows sub-crystalline texture. This cap is commonly present, to what extent is not known. It appears to pinch out along the present West face about 4000' from the bottom. It is observable along most of the 4th West.
- I# The black shale over the coal is in places quite fissile & jointed, elsewhere more massive. Contains abdt. fossils locally, mainly, mainly thin brachs, black lingula, & discina. Pyritic nodules & thin lenses are abdt, as well as concretions up to several ft. The last show the wrapping of sh. on the side, & uniformly a slickensided surface. At least one instance instance of apparent combination of concretion & cap rock was seen. Usually concretions lie below the cap.
- K₁ Maximum measured 57", minimum 47". No benches, but after undercutting coal may part along the thicker char-coal bands, in the upper 2'. Maximum

Collector H.E.C.

Coal: Survey No.

Mine Macon

Co.

Macon

Index No. 1114.01

X.—EXTRA SHEET No. 2



INDEX

K₁ ^{contd.} band seen $\frac{1}{2}$ "

K₃ Clay slips very common, these are of usual type of 1" to 3', some having nearly straight sides, others very irregular, with coal fragments scattered thruout. They mostly cut the bed approximately vertically, some showed max. ~~to~~ divergence from vertical 50°. Following measurements of trend of slips were repeated. -
 N 25 E N. 60 W.
 N 80 E 5 70 W
 N 20 E Small displacement,
 max. 28," observed at some slips;
 none seen commonly. (See Below)

K₅ Variations in character of laminations, thickness of bands, number of pyrite lenses which appear distinctive in places are not characteristic of the bed as a whole. Coal is generally soft, & about $\frac{1}{4}$ glance.

K₃ ^{contd.} Slip Clay resembles floor clay, but in places there is an apparent contact between them.

Collector HEC

Mine Macon

Co. MACON

Coal: Survey No.

Index No. 1114.01

X.—EXTRA SHEET No. 3



Symbol Description Inches

(1 division=3 in.)



Roof - Black sh.

Coal, with dull & glance bands 6
 Coal, more bright bands 14

Coal, zone of abdt. pyrite lenses 18

Coal, like 2, 17

Tape $54\frac{1}{2}$ "

55"

Floor, Clay, acid, slightly gritty, carbonaceous fragments.

Section measured at face on one of the lefts off 9th W, about 440' S.W. of Shaft.



Operator, *Macon County Mining Co.* Date *Sept. 14, 1921*
 Mine, *Macon County* Sec. *15* T. *16N* R. *2E*
 Location in mine, *No. 3 Room 157 Right off 7th R. off 4th W.*

GRAPHIC SECTION		DESCRIPTION OF SECTION (AT POINT SAMPLED)	
In.	No.	No. (Note character and thickness of roof)	Inches
		<i>Black shale roof</i>	
		<i>1 Coal</i>	<i>36 1/2</i>
		<i>2 Pyrite lens</i>	<i>1/8</i>
		<i>3 Coal</i>	<i>22 3/8</i>
		<i>Tape 59 1/4"</i>	
(Note character and thickness of floor)			
Total thickness of coal.			<i>59</i>
Condition, <i>Dry, fresh</i>		Time, <i>4 hr. 43 min.</i>	<i>1348</i> <i>9:05</i>
Wt. Gross, <i>20</i> lbs.		Net, lbs.	
What Nos. shipped by Co.?		<i>All</i>	
Excluded from sample: No.		<i>None</i>	
Sample represents <i>59</i> in.		tons.	
Impurities? How do they occur?		<i>Pyrite & calcite</i>	

(1 division = 3 in.)

fracture fillings

Sample No. *F-21-49* Can No. *96776* Lab. No. *81595*

Collector, *Thurston* Coal: Survey No.
 Mine, *Macon County* Co. *Macon* Index No. *111401*



Operator, *Macon County Mining Co* Date *Sept. 14, 1921*
 Mine, *Macon County* Sec. *15* T. *16N* R. *2E*
 Location in mine, *Room 3, 15th Right off 9th W.*

GRAPHIC SECTION		DESCRIPTION OF SECTION (AT POINT SAMPLED)	
In.	No.	No. (Note character and thickness of roof)	Inches
		<i>Black shale roof</i>	<i>3 1/4</i>
		<i>1 Coal</i>	<i>38 3/4</i>
		<i>2 Pyrite lens</i>	<i>2 1/4</i>
		<i>3 Coal</i>	<i>13 1/4</i>
		<i>Trace 54 1/4"</i>	
(Note character and thickness of floor)			
Total thickness of coal.			<i>54 1/4</i>
Condition, <i>Dry, fresh.</i>		Time, <i>3</i> hr. <i>14</i> min.	<i>1369</i> <i>10153</i> <i>314</i>
Wt. Gross, <i>18</i> lbs.		Net, lbs.	
What Nos. shipped by Co.?		<i>1, 3</i>	
Excluded from sample: No.		<i>2</i>	
Sample represents		<i>52</i> in.	tons.
Impurities? How do they occur?		<i>Pyrite & calcite</i>	
(1 division = 3 in.)		<i>fracture fillings</i>	

Sample No. *V-21-50* Can No. *05728* Lab. No. *81596*

Collector, *Thorston* Coal: Survey No.

Mine, *Macon County* Co. *Macon* Index No. *111901*

R.—COAL SAMPLE SHEET.



Operator, *Macon County Mining Co.* Date *Sept. 14, 1921*
 Mine, *Macon County* Sec. *15* T. *164* R. *2E*
 Location in mine, *Face of 5th drift 4th E.*

GRAPHIC SECTION		DESCRIPTION OF SECTION (AT POINT SAMPLED)	
In.	No.	No.	(Note character and thickness of roof) Inches
			<i>Black shale roof</i>
		<i>1</i>	<i>Coal 1 1/2</i>
		<i>2</i>	<i>Charcoal lens 1/4</i>
		<i>3</i>	<i>Coal 2 5/4</i>
		<i>4</i>	<i>Pyrite lens 1 1/2</i>
		<i>5</i>	<i>Coal 11 3/4</i>
		<i>6</i>	<i>Black jack band 1/2</i>
		<i>7</i>	<i>Coal 1 1/2</i>
			<i>Tape 55'</i>
			(Note character and thickness of floor)
			Total thickness of coal. <i>55 1/4</i>
			Condition, <i>Dry, fresh.</i> Time, <i>2 hr. 2 min. 12:20</i>
			Wt. Gross, <i>20</i> lbs. Net, lbs.
			What Nos. shipped by Co.? <i>4, 3, 5, 7</i>
			Excluded from sample: No. <i>4, 6</i>
			Sample represents <i>53 1/4</i> in. tons.
			Impurities? How do they occur?

(1 division = 3 in.)

Sample No. *7-21-51* Can No. *088* Lab. No. *81597*
 Collector, *Thurston* Coal: Survey No. *5*
 Mine, *Macon County* Co. *Macon* Index No. *1114.01*



COAL MINE NOTES.

1114

COUNTY *Macon* TOWN _____ MAP No. _____
 T. *1614* R. *2E* S. *14 W 1/2, SW 1/4*
 OPERATOR *Manufactures + Consumers Coal Co.*
 OFFICE *Decatur*
 MINE *M+C. *1*
 TIPPLE _____
 ENGINES _____
 BOILERS _____
 DRUM _____
 SHAFT _____ CAGE _____
 HAULAGE *Mules*
 CARS *Wood 1 1/2 tons.*
 VENTILATION *Fan Forcing.*

DRAINAGE _____

SPRINKLING _____

WORKING SYSTEM *Room + Pillar discontinued now long wall advancing*

MINING METHODS *Machines discontinued + formally in operation.
 Hand mined cutting in fire clay.*

SIZE OF ENTRIES—MAIN CROSS ROOM NECK

SIZE OF PILLARS—MAIN CROSS ROOM

SHAFT CHAIN BARRIER

AMOUNT OF TIMBERING *Timber along entries* SIZE

PROPORTION OF COAL UTILIZED

AMOUNT AND CHARACTER OF WASTE

ACREAGE OF COAL MINED

ACREAGE OF COAL REMAINING

PROPORTION OF MINE RUN AND SCREENED COAL

METHOD OF SIZING *Shaker screen* RESCREENED

SIZES *1 1/4", 2 1/2", Nut, pea, slack.*

PER CENT

PROPORTION AND SIZE OF WASHED COAL

DAILY OUTPUT *650 to 700 tons.*

UTILIZATION

MARKETS

FREIGHT RATES

SELLING PRICES AT MINE

COAL LAND OWNED LEASED HELD IN FEE

COST OF LAND OWNED LEASED HELD IN FEE *1/2 1/2 1/4*

ADDITIONAL NOTES *Ottumwa Box Car loader.*

1114



COAL MINE NOTES.
CONTINUED.

1114

OPERATOR *Manufacturers Consumers Coal Co.* MINE *M+C #1*
 ENTRANCE *Shaft* NAME OF COAL BED *#5*
 ELEVATION *about 615 Top Map* THICKNESS OF COAL
 DEPTH TO FLOOR *560* MAX. MIN. AV.
 ALTITUDE OF COAL
 LOCATION OF SECTION *5th W. off 1st S.W.*

No.	SECTION.	In.
1	<i>Black shale</i>	<i>14</i>
2	<i>Coal</i>	<i>51</i>
3	<i>Fire clay</i>	<i>14</i>
4		
5		
6		
7		
8		
9		
10		
11		
12		
Tape		Total

SAMPLE No. *U1*

CAN No.

CONDITION *Dry*

GROSS WEIGHT *50**

TIME EXPOSED

NOT SHIPPED

NOT INCLUDED

SECTION

Feet

PHYSICAL PROPERTIES BY NUMBERS

A occasional band of pyrite occurs in the middle of the coal but is not continuous.

ROOF *Black slate, Roof rather good occasionally falling*

FLOOR *Fire clay; heaves occasionally.*

DIP

FAULTS, ETC. *Horse backs abundant.*

GAS

X1569a

COLLECTOR

REFERENCE

DATE

1114
12.24



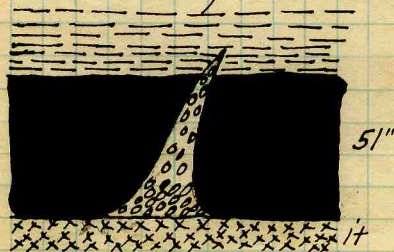
South of the West about 700' to 800' the following section was observed. 1114

5. A rather fine grained Ss. 4'-4"
4. A soft shale grayish colored, with an abundance of small concretions of clay ironstone. 4'-5'
3. Band rock. A hard Ls. with a few fossils, *Productus seminula* etc. With calcite pockets 10"-24"
2. Black fine grained shale, with an abundance of *Lingula* & *Cerbiculoidia*. Shale has small irregular pockets of drab colored clay. 24"
1. Coal 4'-6"

In *2 large boulders or concretions of iron pyrites. These are rather abundant varying in weight from a couple of pounds to 105 lbs. Numerous slickensides in the neighborhood of the concretions, produced by the concretions. 1st east entry off 1st South west, a large concretion occurs that cuts out the coal to within a foot of the floor.

5th West off 1st South West.

Along the face there is a small horse back cutting the coal from the top to the bottom; the thickness varies from 6" to 10", in width. It consists of a grayish colored clay and is continuous with the floor. Also extending some distance into the roof.



ILLINOIS COAL MINE NOTES

TOWN *Decatur* T. *16N* R. *2E* S. *14* W $\frac{1}{2}$ *SW* $\frac{1}{4}$ *macon* CO.
 COAL BED # *5* DATE COLLECTOR
 OPERATOR *Manufactures + Consumers Coal Co* MINE *M + C.*
 HEAD OFFICE *Decatur* *1114*

CAPACITY MARKETS, FRT.
 ENTRANCE *Shaft 560'*
 CAGE ENGINES
 DRUM
 SCREENS STORAGE
 VENTILATION
 GAS, SOURCE
 COAL THICKNESS, AV. *51"* MAX. MIN. ELE. FT.

SECTION LOCATED

No.	In.	No.	In.
1		7	
2		8	
3		9	
4		10	
5		11	
6			

NOT SHIPPED NOT INCLUDED CAN SAMPLE

PHYSICAL PROPERTIES BY NOS.

ROOF FLOOR
 DIP CLEAT
 FAULTS, ETC.
 MACHINES
 HAULAGE CARS
 DRAINAGE
 WORKING SYSTEM
 ENTRIES, MAIN CROSS ROOMS
 PILLARS, MAIN CROSS ROOM
 DRAWN TIMBERS

Note also: Variation in coal, impurities, roof, structure.
 Collect records, analyses, fossils. Note land values, etc.

NB 138 p 2.

1114
新井新井



COAL MINING INVESTIGATION

COOPERATIVE AGREEMENT

Operator, *Manufacturers & Consumers Coal Co.* Date, *July 25* 1912
 Mine, *Nol. (Long Wall)* Located *1* miles *S* from *Decatur*
 Location in mine, *Face of 9th West off 1st South*
 Total (vertical) depth from surface at point of sampling, *600* ft.

In describing the beds and character of the members, note any member that is rejected by the miner. Note all clay and sulphur partings, whatever their thickness. Exclude from sample all clay and sulphur partings $\frac{3}{8}$ inch thick or over (and even those of less thickness if they are rejected at mine or tippie).

SECTION OF BED AT POINT SAMPLED

No.	DESCRIPTION	FEET	INCHES
X 1	Roof Black shale		
2	Coal - fairly clean - Alternated with	3	9 $\frac{1}{2}$ $\frac{1}{2}$
3	Mother of Coal - Soft (bright)		
4	Coal -		
5			4
6			
7	Floor - fire clay - light grey.		
8			
9			
10			
11			
12		150	
13			
14			
15			
16			
17			
TOTAL,		4'	2"

Is coal wet or dry? *Dry* ✓
 Time exposed, *0* hours, *35* minutes.
 Weight, *35#* gross, net.
 What are the impurities, and how do they occur? *dirt & mother of coal in hor. streaks - a little CaCO₃ on cleat.*
 What are shipped? *2, 3, 4.*
 What are excluded from the sample? *1*

*Direction (N., NE., etc.).

Coal bed, *No. 5*
 †Nearest railway station.

Town, *Decatur* Mine, *Nol. (Long Wall)* Co. *Manufacturers & Consumers Coal Co.*
 Sample No. *42 B* Can No. *Std 3* No. *42 1114*
 I. - COAL SAMPLE SHEET. Sampler. *Nebel & Smith*

5200



COAL MINING INVESTIGATION

COOPERATIVE AGREEMENT

Operator, *Manufacturers & Consumers Coal Co.* Date, *July 25* 1912
 Mine, *No. 1 (Long Wall)* Located *1* miles* *5* from † *Decatur*
 Location in mine, *Face Main West*
 Total (vertical) depth from surface at point of sampling, *600* ft

In describing the beds and character of the members, note any member that is rejected by the miner. Note all clay and sulphur partings, whatever their thickness. Exclude from sample all clay and sulphur partings $\frac{3}{8}$ inch thick or over (and even those of less thickness if they are rejected at mine or tippie).

SECTION OF BED AT POINT SAMPLED

No.	DESCRIPTION	FEET	INCHES
1	Roof Black Shale		
2	Coal - clean bright hard	2	4 $\frac{1}{2}$
X 3	Bone & coal		8 $\frac{1}{4}$ $\frac{1}{4}$
4	Coal - fairly clean hard		7 $\frac{1}{2}$
5	Pyrite		10 $\frac{1}{2}$
6	Coal - fairly clean		
7	Mother of Coal - Soft		
8	Coal - dirty		
9			
10	Floor - fire clay		
11			
12			
13			
14		151	56
15			
16			
17			
TOTAL,		4'	8"

Is coal wet or dry? *Dry*
 Time exposed, *0* hours, *40* minutes.
 Weight, *35#* gross, net.
 What are the impurities, and how do they occur? *pyrite, bone, mother of coal & soft dirt in horizontal streaks.*
 What are shipped? *2, 4, 5, 6, 7, 8*
 What are excluded from the sample? *1, 3*

Coal bed, #5

*Direction (N., NE., etc.).

†Nearest railway station.

Town, *Decatur* Mine, *#1 (Long Wall)* Co. *Main & Con. Coal Co.*
 Sample No. *42c* Can No. *1565* #39 No. *42.1114*

I.—COAL SAMPLE SHEET. Sampler, *Smith + Nobel*
 #5201



COAL MINING INVESTIGATION

COOPERATIVE AGREEMENT

Operator, *Manufacturers & Consumers Coal Co* Date, *July 25* 191*2*
 Mine, *Nol (Longwall)* Located *5* miles* from *Decatur*
 Location in mine, *At Face, 3rd Left of 1st E, off 1st South*
 Total (vertical) depth from surface at point of sampling, *600* ft. ✓

In describing the beds and character of the members, note any member that is rejected by the miner. Note all clay and sulphur partings, whatever their thickness. Exclude from sample all clay and sulphur partings $\frac{3}{8}$ inch thick or over (and even those of less thickness if they are rejected at mine or tippie).

SECTION OF BED AT POINT SAMPLED

No.	DESCRIPTION	FEET	INCHES
X 1	Roof - Black Shale		
2	Coal - clean - hard - bright blocky	3	7
3	Coal - bony with little sulphur		1
4	Coal - clean - bright		4 $\frac{1}{2}$
5	Mother of coal		$\frac{1}{2}$
6	Coal - fairly clean		7
7			
8	Floor - fireclay		
9			
10		150	
11	(Coal seems to be very clean)		
12			
13			
14			
15			
16			
17			
TOTAL,		4	8

Is coal wet or dry? - *Dry* ✓
 Time exposed, *0* hours, *30* minutes.
 Weight, *50#* gross, net.
 What are the impurities, and how do they occur? - *very little bone, mother of coal + sulphur in horst streaks - CaCO₃ on cleat.*
 What are shipped? *2, 3, 4, 5, 6*
 What are excluded from the sample? *1.*

*Direction (N., NE., etc.). †Nearest railway station. Coal bed, *No. 5*

Town, *Decatur* Mine, *Nol. (Longwall)* Co. *Manufacturers & Consumers Coal Co*
 Sample No. *42A* Can No. *Std 42* No. *42* **1114**

I.—COAL SAMPLE SHEET. Sampler, *Nebel & Smith*
#5202



1114 - Macou
Manufacturers + Consumers
Coal Co. No. 1
W² S W⁴ - Need more definite location
Depth to bottom of coal 560'
Thickness ?