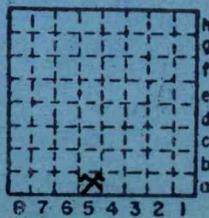


Lanthrop Coal Bank

Sixty 4099

505



Sec. 23 A5

T. 9 S.

R. 4 E.

Index No.

0823



Mine originally operated by: (1)

Date

Lanthrop B K

Original name or number:

Illinois Coal Report

p.

LATER OPERATORS

Date

Operator

Name or No.

- 2
- 3
- 4
- 5
- 6
- 7
- 8
- 9
- 10
- 11
- 12
- 13
- 14

* Also owners

#See ownership sheet

Railroad, Wagon, Idle, Abandoned Strip

LOCAL MINE

IDENTIFICATION

County No. 505

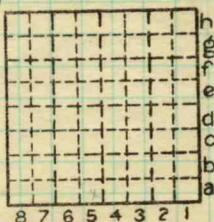
Coal No.

6

Quad. Harrisburg

Part

County Williamson



Sec. 23

| | | |
|----|---|----|
| T. | 9 | N. |
| R. | 4 | S. |
| | | E. |
| | | W. |

Index No.

0823 a5

COAL MINE OPERATOR



LOCATION AND ELEVATION

Location: side R. R.
side R. R.
side Highway No.

on top. map Location sheet

Elevation: Method, 1. Est. () ft.
2. Inst. (kind F) 449 ft.

By Data sheet

DEPTH

Authority To coal ft.
Authority Rail to rail ft.
Top of coal above rail. (Est. Rule) ft.
To coal ft.

ALTITUDE OF TOP OF COAL

By estimated data
By instrumental data 449 ft.

Thickness

Max. in. Min. in. Aver. 64 in.

GEOLOGICAL DATA

Mine notes, date

Coop No. Pyr. inv. Coal Ash inv.

CHEMICAL DATA

Analyses Face U. I. B. M. Others
Car U. I. B. M. Others
Org. Sulf U. I. B. M. Others
Ash fusion U. I. B. M. Others
Ash anal. U. I. B. M. Others
U. I. B. M. Others

Classification

Misc. tests: Coking. Cleaning Boiler

Published descriptions:—

Railroad, Wagon, Idle, Abandoned Strip

IDENTIFICATION

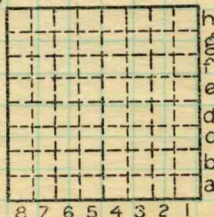
County No. 505

Coal No.

6

Part

Quad. Harrisburg
County Williamson



Sec. 23

T. 9 N. S.
R. 4 E. W.

Index No. 0823 a5

COAL MINE LOCATION AND DATA