



Form 180 Blue

ISGS Mine Index # 804
VINYARD C.C., #1

L-96

M f e d c b a	Sec. 13	
	T.	N. 9 S.
	R.	7 E.
	Index No.	

Mine originally operated by: (1)

Date

Vinyard C. C.

1955

Original name or number: *1

Illinois Coal Report

p. 52

LATER OPERATORS

Date	Operator	Name or No.
2 6/1957	Liberty C C	2
3 7/1957	Vinyard C C	1
4		
5		
6		
7		
8		
9		
10		
11		
12		
13		
14		

30' to 4'8" of No. 3.
Location.

- D. M. M. 10/57

*Also owners

#See ownership sheet

Railroad, Wagon, Strip, Idle, Abandoned

IDENTIFICATION

County No. _____

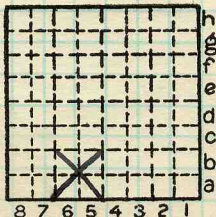
Coal No.

Coal Report No. L-96

Quad.

County

Saline



Sec. 13

T.	9	N.
R.	7	S.
		E.
		W.

Index No.

COAL MINE OPERATOR



(Sheets) COAL PRODUCTION (Sheet)

Period				Tons	
Mo.	Day	Year	Mo.	Day	Year
		1955			
		1956			
		1957			
		abnd Oct 57			
		Vinyard #1			
		Liberty #2			
					40 641
					91 776
					40 000
					4 600

SUMMARIES

No.	to	No.

Railroad, Wagon, Strip, Idle, Abandoned

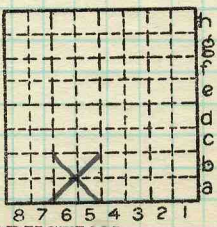
IDENTIFICATION

County No. _____ Coal No.

Coal Report No. L-96

Quad. _____

County Saline



Sec. 13

T. 9 N. S.

R. 7 E. W.

Index No. _____



Vineyard Coal C. - (strip)

Face Channel Sample #1

SW SW Sec 13 T9S R7E ^{Saline} Gallatin Co
Sample taken 5 July 1956 by J. Simon
and R. Lennon 4 hrs. after a heavy rain

Surface scraped off

Shale, gray, with brown 12' 0"±
stains, not examined

Siltstone, gray, in benches 12' 0"±
up to 6" thick, not examined

Limestone, gray dense, 0' 9"
argillaceous, fossiliferous

Shale, black, well laminated 4' 0"
slaty in part with numerous
light gray streaks and
lenses in top, occasional
dark gray to black
pyritic & calcareous,
concretions 1" to 6",
a zone 7" thick of
dark gray calcareous
concretions up to 5'
across 16" from top.
occasional coal streaks
in bottom 4", several
dark gray pyrite
concretions up to 6"
thick 36" across on
top of coal.

Coal - normally bright 4' 6"
banded with much pyrite
and some calcite on
nearly vertical faces.
No prominent bands,
Occasional pyritic lenses
(none in sample) a 1/2"
fusain band 1 1/2" from base

Under clay - light gray

Vineyard Coal C. - (strip)

Face channel sample #2

150' E of sample #1

SW SW Sec 13 T9S R7E Saline Co

Sample taken 5 July 1956 by J. Simon
and R. Lennon 4 hrs after heavy rain.
Sample wet.

Section same as sample
#1

Coal - normally bright $4\frac{1}{4}$ "
Banded, a seam of very
bony coal in top $\frac{1}{4}$ ",
nothing excluded, calcite
and pyrite prominent in
fracture zones up to
1" wide through out
thickness of seam, No
prominent bands or
partings.

Vineyard Coal Co., Saline County.

Strip pit sampled July 1956 - Samples 1 & 2

Sample No 3 sampled 8/8/56 by JAS, WHS

Sample 3 near SW end of pit about 400'

SW of Samp #1 - Pit appears to be abandoned as of this date.

Surface - cut back & removed.

18' ± Gray shale, stained brown, well laminated, prominent joint pattern - main joints N-S
Silty in lower part

0'10" ls. dk gray, foss. (St. David) stained brown

4'3" DK gray to black shale fine grading down to well laminated with a concretions
6" thick x 36" long on top of coal

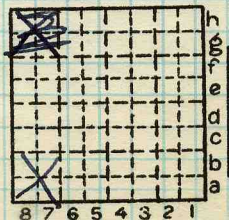
4'7" Coal No. 5, normally bright banded, top 15" much brown stain & fractured showing weathering effects coal relatively soft throughout, prominent vertical, calcite & pyrite filled fractures & veinlets some of which run through full thickness of seam, others in lower part only

Underclay, gray

By _____ Date _____

Quad. _____ Part _____

County _____



13
Sec. ~~7~~
T. X
9 S.
7 E.
R. X
Index No.

Vineyard Coal Co., Saline County

Strip-pit sampled July 1956 (Samples 1 ~~2~~ & 2).

Sample #3 sampled 8-8-56 by J.A.Simon and W.H. Smith. Sample #3 near SW end of pit about 400' SW of sample #1.

Pit appears to be abandoned as of this date.

Surface- Cut back and removed.

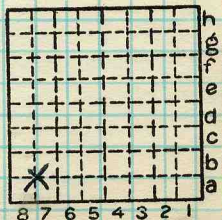
- 18'± Shale, gray, stained brown, well laminated, prominent joint pattern- main joints N-S, silty in lower part.
- 0'10" Limestone, dark gray, fossiliferous, (ST. DAVID), stained brown.
- 4'3" Shale, dark gray to black, fair grading down to well laminated with a concretion 6" thick x 36" long on top of coal.
- 4'7" Coal (No. 5), normally bright banded, top 15" much brown stained and fractured showing weathering effects, coal relatively soft throughout, prominent vertical calcite and pyrite filled fractures and veinlets, some of which runs through full thickness of seam, others in lower part only.

Underclay, gray.

By Simon-Smith Date 8-8-56

Quad. Part

County **SALINE**



Sec. 13
 T. 9 S.
 R. 7 E.
 Index No.

