



Mine originally operated by: (1) NATIONAL FIRE PROOFING Co.
Date 1914 OTTAWA

Original name or number: Strip
Illinois Coal Report p.

LATER OPERATORS

Date	Operator	Name or No.
2	1933 Operating	
3		
4		
5		
6		
7		
8		
9		
10		
11		
12		
13		
14		

* Also owners # See ownership sheet

Railroad, Wagon, Idle, Abandoned

ACTIVE

IDENTIFICATION

County No.

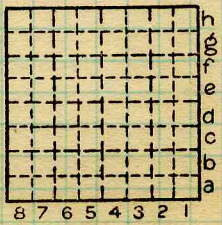
Coal No.

Quad.



Part

County LASALLE



Sec.

T.

N.

S.

R.

E.

W.

Index No.

COAL MINE OPERATOR