

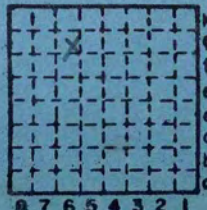
abandoned
8/64

DEPTH OF COAL 198'
FROM 1961 M+M REPORT
LDA
COAL 6' THICK

Eddy C. C.

L-7

SANGAMON County



h	Sec.	16	
g	T.	17	N.
f			S.
e			E.
d	R.	5	W.
c	Index No.		
b			
a			

9 7 6 5 4 3 2 1



Mine originally operated by: (1) Bryan Eddy

Date 1936 L-7

(1909)
(1920)

Original name or number:
Illinois Coal Report 1936 p. operator's report 1948

LATER OPERATORS

Date Operator Name or No.

1928 Bryan Eddy "Eddie Coal Co"
Cantrall, Ill.
1949 Eddy Coal Co.

43,357 tons

(1948)

* Also owners #See ownership sheet

Railroad, Wagon, Idle, Abandoned Shaft Mine

200' (1948)

August 64
IDENTIFICATION L-7

County No. Coal No. 5

Quad. Springfield Part
(1948) 5' 0"

County Sangamon



Sec. 16
T. 17 N.
R. 5 W.
Index No. 0416 G-6

COAL MINE OPERATOR LOCAL MINE



(Sheets)

COAL PRODUCTION

(Sheet)

Period			Tons				
Mo.	Day	Year	Mo.	Day	Year		
		1939				25	142
		1940				33	891
		1941				19	702
		1942				16	712
		1943				19	396
		1944				17	825
		1945				38	697
		1946				35	896
		1947				37	824
		1948				43	357
		49				36	091
		50				48	958
		1951				46	165
		52				50	575
		1953				56	624
		1954				58	080
		1955				60	000
		1956				80	000
		1957				92	000
		1958				78	200
		1959				71	400
		1960				69	850
		1961				67	500
		1962				72	650
		1963				116	670
		1964				70	244

Idle

25896

39824

SUMMARIES

No. to No.

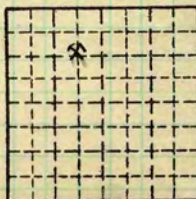
Railroad, Wagon, Idle, Abandoned

IDENTIFICATION L-7

County No. Coal No. 5

Springfield Part

County Sangamon



Sec. 16

T. 17 N.

R. 5 W.

Index No. 041666

COAL MINE—PRODUCTION

FORM 180 W
ILLINOIS GEOLOGICAL SURVEY, URBANA

Eadie & Gartner - July 31, 1962

Eddy Coal Company

Sample # 1

1075'S, 1825'W of NE corner

Sec. 16, T. 17 N., R. 5 W.

1st E. - 3rd NE.

Sample 1

Black shale roof - pyrite lamination at contact zone,
some pyrite nodules.

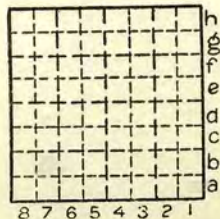
Total thickness - 72", No. 5 Coal.

0-72" - clarain, medium banded, vitrain and fusain
layers about 1/8" thick, occasional shale
parting up to 1/4" thick, occurring in angular
planes in seam, occasional pyrite in cleavage,
also occurring in veinlets vertically; some
mineralized fusain in bands up to 1/8" thick,
medium gray underclay, no apparent breaks in
seam, no departures from normal as thick as
3/8".

By GE & SG Date 7-31-62

Quad. _____ Part _____

County SANGAMON



Sec. 16

T. 17	N.
	E.
R. 5	W.

Eddie J. Cartner 7-31-62

Eddy Coal Co., ~~Sanger, C.~~

1075' S, 1825' W of NE corner, Sec. 16

Sample #1 T. 17N, R. 5W

1st E 3rd NE.

Black shale roof. pyrite lamination
at contact zone, some pyrite
nodules.

Total thickness 72", #5 coal
0-72" Clarain, medium banded,
vitrain + fusain layers about 1/8"
thick, occasional sh. parting up
to 1/4" thick occurring in angular
planes in seam, occasional
pyrite in cleav., also occurring
in veinlets vertically; some
~~are~~ mineralized fusain in
bands up to 1/8" thick,
medium gray underclay
no apparent breaks in seam.

31 Jul 62

no departures from normal
as thick as $\frac{3}{8}$ "

Sampled 31 Jul 62

Eadie & Gartner accompanied by O. Roberts, Nite Mine Mgr.

East area of mine sealed.

Developing 3rd off main E. entries and also East off these entries. Roof bolting, Conventional trackless equipment loading into 2 ton Mine Cars (wooden)

#1

1075S 1825'W NE Cor Sec 16, T17N R5W

#2

325S 2725W NE Cor Sec 16, T17N R5W

#3

1015S 3050'W NE Cor Sec 16 T17N R5W

Mine Mgr. Louis Marada

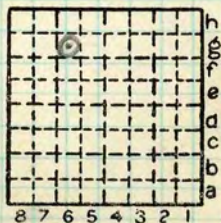
Shaft 150' to 6'0" Coal

Eddy C.C.
#5 coal

By.....Date.....

Quad.....Part.....

County Sangamon



Sec. 16
T. 17 N.
R. 5 W.
Index No.

L-7

Eadie & Gartner 7-31-62

Eddy Coal Co., Central, ~~Id.~~

Orie Roberts Night Mine Mgr.

Louis Marada Mine Mgr.

: East area of Mine Sealed

Working East off 3 North
and developing North Entries
conventional mining loading
into wooden mine cars
(about 27 in cars)

Contract with local power
co. and State Institutions

Summer Construction work
only at time of sampling

Eadie and Gartner - July 31, 1962

Eddy Coal Company
Sample # 2

1st NE entry

325'S, 2725'W of NE. corner
Sec. 16, T. 17 N.; R. 5 W.

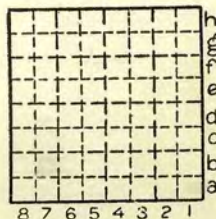
Begin at top.
Total thickness 68", No. 5 Coal.

0-68" - clarain, medium banded, calcareous in cleavage, some pyrite in cleavage, occasional 1/32" band of pyrite, occasional mineralized fusain up to 3/32", rare pyrite lense 3/8" thick, 4" long.

By GE & SG Date 7/31/62

Quad. _____ Part _____

County SANGAMON



Sec. 16

T. 17	N.
R. 5	S.
	E.
	W.

Eadie & Gartner

31 Jul 62

Eddy, Coal Co.

Sample # 2

1st NE entry

325'S, 2725'W of NE corner, Sect 16 T.17N, R.5W

Begin at top.

Total thickness 68", #5 coal

0-68" claram, med. banded, calc.
in cleav., some pyrite in cleav.,
occasional $\frac{1}{32}$ band of pyrite,
occasional mineralized fusain
upto $\frac{3}{32}$ ", ~~rare~~ rare pyrite
~~subtle~~ lense $\frac{3}{8}$ " thick, 4"
long

ILLINOIS GEOLOGICAL SURVEY, URBANA

Eadie and Gartner - July 31, 1962

Eddy Coal Company
Sample # 3
2nd W. off 1st NE.

1015'S, 3050'W. of NE. corner
Sec. 16, T. 17 N., R. 5 W.

Total thickness 63½", No. 5 Coal.

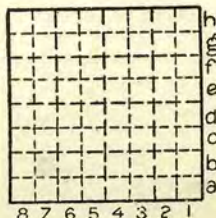
Black shale roof, very irregular contact zone; coal, shale, bone; face area contains numerous large pyrite nodules of up to 3-4" thick, 12-14" long; none present where sample was taken.

0-51" - normally bright band clarain, occasional 1/16" mineralized fusain, pyrite and some calcite in cleavage planes, occasional 1/32" pyrite band, pyrite zone dendritic veins, thickest point ½", several such zones present.

51-63½" - banded, bony appearing coal, mineralized fusain up to ½" thick bands, pyrite band 1/32" thick, many alternating layers of vitrain bands up to ½" thick, bony appearing coal bands ½"-3" thick between vitrain bands.

Sample taken 5' west of faulted zone with about 12-18" of strike slip displacement. Dip of faulted zone about 60° W., strike - generally N-S. These faults reportedly occur frequently in West entry, and are randomly distributed. Faulted zone contains about 12" hard clay.

By GE & SG Date 7/31/62
Quad. Part
County SANGAMON



Sec. 16
T. 17 N.
R. 5 W.

Eadie & Gartner

7-31-62

Eddy Coal Co.

1015'S, 3050'W, NE

Sample # 3 corner, Sec. 16

2nd W off 1st NE T. 17N R. 5W

Total thickness 63½", #5 coal

Black sh. roof, very irregular contact zone; coal, sh., bone
Face area contains numerous large pyrite nodules of up to 3-4" ~~thick~~ thick, 12-14" long; none present where sample was taken

0-51" nbb cloram, occasional 1/16" mineralized fusam, pyrite + some calcite in cleavage planes, occasional 1/32" pyrite band pyrite zone dendritic veins, thickest part 1/4" several such zones present.

51-63 1/2" banded, bony appearing coal, mineralized fusain up to 1/4" thick bands, pyrite band 1/32" thick, many alternating layers of vitrain ^{bands} up to 1/4" thick, bony appearing coal bands up to 2 1/4" thick in 1/4"-3" thick between vitrain bands

Sample taken 5' west of faulted zone with about 12-18" of strike slip displacement. Dip of faulted zone about 60° W strike - generally N-S. These faults reportedly occur frequently in West entry, and are randomly distributed. Faulted zone contains about 12" hard clay

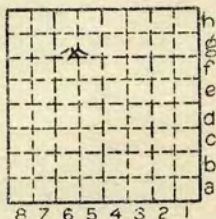
Location and Elevation Data

Location: Exact Approximate
 (Approximate only if no trace of record of original exists)
 Location by J. W. Howell
 Date 1938 Notebook No. _____ Page _____
 Looseleaf ref. _____
 Map files No. _____

Description of Location

Position in sec., 1/4 sec., 40 acres

_____ feet from North line
 _____ feet from East line
 _____ feet from South line
 _____ feet from West line



Sec. 16
 T 17 N.
 R E.
 SW.

Other description: L-7
SE SW NE NW

Farm _____
 No. _____
 Company Bryant Eddy Coal Co.
 No. _____
 County No. 47

33891
 Elevation 570 ft.
 By _____

Method: Level, transit, alidade, hand level
HL
 Elevation of _____
 Height of point above ground _____
 Date _____ Notebook _____ P. _____
 Looseleaf ref. _____

Map files No. _____
 Description of item: (drill hole, mine, etc.) Shaft Mine
6 of Coal
 County Sangamon Quadrangle Springfield Index No. 0416 G6
 (A4242-5M-8-39) 2 (158)



Mine originally operated by: (1)

J. M. Jackaway C. Co.
Control.

Date 1924

Original name or number:
Illinois Coal Report p.

LATER OPERATORS

Date	Operator	Name or No.
2		
3		
4		
5		
6		
7		
8		
9		
10		
11		
12		
13		
14		

* Also owners # See ownership sheet

Railroad, Wagon, Idle, Abandoned

IDENTIFICATION

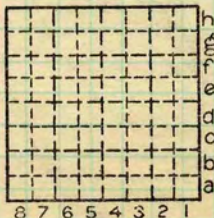
County No.

Coal No.

Quad.

Part

County Sangamon



Sec.

T.	N.
R.	S.
	E.
	W.

Index No.

COAL MINE OPERATOR



Mine originally operated by: (1)

L. P. Fisher
Cantrall.

Date 1921.

Original name or number:
Illinois Coal Report p.

LATER OPERATORS

Date	Operator	Name or No.
2		
3		
4		
5		
6		
7		
8		
9		
10		
11		
12		
13		
14		

* Also owners # See ownership sheet

Railroad, Wagon, Idle, Abandoned

IDENTIFICATION

County No.

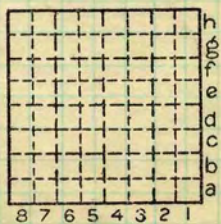
Coal No.



Quad.

Part

County Sangamon.



Sec.

T.

N.

S.

R.

E.

W.

Index No.

COAL MINE OPERATOR