

Form 180 Blue

2002

Mauck Bros C.C.

IS685 index = ~~357~~
6754

T19N
R12W

Sec. 11



Mine Name or No., *Mauck Bros.*

mile from

Operator, 1901 *Mauck Bros.*

to

Operator, 1909 *Mauck Bros.*

drift a slope

Entrance, Elev.,

ft. {above, *E 1/2 SWSW sec. 11 (plat Maps)*
below,
ft. Alt. *W 1/2 SESW sec. 11*

Depth to bottom coal,

SURFACE DATA.

A. Topography,

See

B. Surficial materials. (1) Character,

(2) Thickness, (3) Effect on mining and shaft-sinking, of former drainage lines, underground water strata, etc.

C. Outcrops, (1) Character,

See

(2) Structure,

See

(3) Fossil horizons,

See

Collection No.,

See

(4) Evidences of subsidence,

See

D. Note collection of mine maps, drill records and shaft logs.

See drill record sheet,

E. Notes on surrounding area,

Railroad, Wagon, Idle, Abandoned

IDENTIFICATION

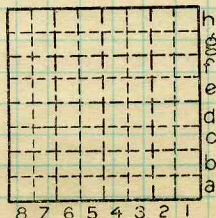
County No.

Coal No.

7
Part

Quad.

County *Vermilion*



Sec. *11*

T. *19* N.

R. *12* W.

Index No.

