



Form 180

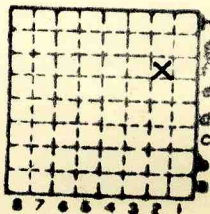
INO. & Ill. C. Corp., # 15

~~F. C. Keller~~

"Taylor Springs" Mine

Mi. #77

158



Sec. 23

T. 8

R. 4

Index No.

1723 F2

✓



Mine originally operated by: (1) **MONTGOMERY COUNTY COAL CO. #1**
 Date **1909 Coal Reports** Hillsboro

Original name or number:
 Illinois Coal Report p.

LATER OPERATORS

Date	Operator	Name or No.
2 1913	PEABODY COAL Co.	15
3 1915	ABANDONED	
4 1917	C. & E. I Reopened	15
5 1919	ILLINOIS COAL PROPERTIES	15
6 1920	IND. & ILL. COAL CORP.	15
7	T. C. Keller.	"Taylor Springs" Mine

8
9
10
11
12
13
14



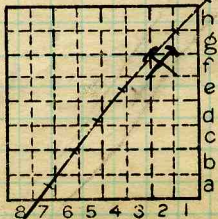
* Also owners # See ownership sheet

Railroad, Wagon, Idle, Abandoned

SHIPPING MINE

IDENTIFICATION

County No. **158.** Coal No.
 Quad. **202.** Part
 County **MONTGOMERY**



Sec. **23**
 T. **8** N.
 R. **4** W.
 Index No.

COAL MINE OPERATOR

1723.2f



LOCATION AND ELEVATION

Location: side C.C.C. & St. L. R. R.
 side C. & E. I. R. R.
 side Highway No.

on top. map Location sheet

Elevation: Method, 1. Est. () _____ ft.
 2. Inst. (kind _____) 622.3 ft.

By M c D Data sheet

DEPTH

Authority To coal _____ ft.
 Authority Rail to rail _____ ft.
 Top of coal above rail. (Est. Rule) _____ ft.
 To coal 459.4 ft.

ALTITUDE OF TOP OF COAL

By estimated data _____
 By instrumental data 162.9 ft.

Thickness

Max. in. Min. in. Aver. 84 in.

GEOLOGICAL DATA

Mine notes, date _____

Coop No. 77 Pyr. inv. Coal Ash inv.

CHEMICAL DATA

Analyses Face	U. I.	<u>5516</u>	B. M.	Others
Car	U. I.		B. M.	Others
Org. Sulf	U. I.		B. M.	Others
Ash fusion	U. I.		B. M.	Others
Ash anal.	U. I.		B. M.	Others
	U. I.		B. M.	Others

Classification

Misc. tests: Coking. Cleaning Boiler

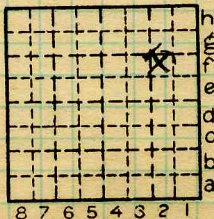
Published descriptions:—

Railroad, Wagon, Idle, Abandoned

IDENTIFICATION

County No. 158
 Quad. 202
 County Montgomery

Coal No.
 Part



Sec. 23

T. 8 N.
~~S.~~
 R. 7 W.
 Index No.

1723.2f

COAL MINE LOCATION AND DATA



(Sheets) COAL PRODUCTION (Sheet)

Period						Tons
Mo.	Day	Year	Mo.	Day	Year	
		1925			1926	Idle : Dept. of Mines — 0 —
					1927	

SUMMARIES

No. to No.

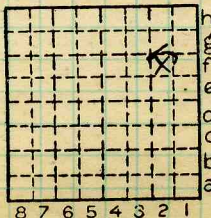
Railroad, Wagon, Idle, Abandoned

IDENTIFICATION

County No. 158 Coal No.

Quad. 202 Part

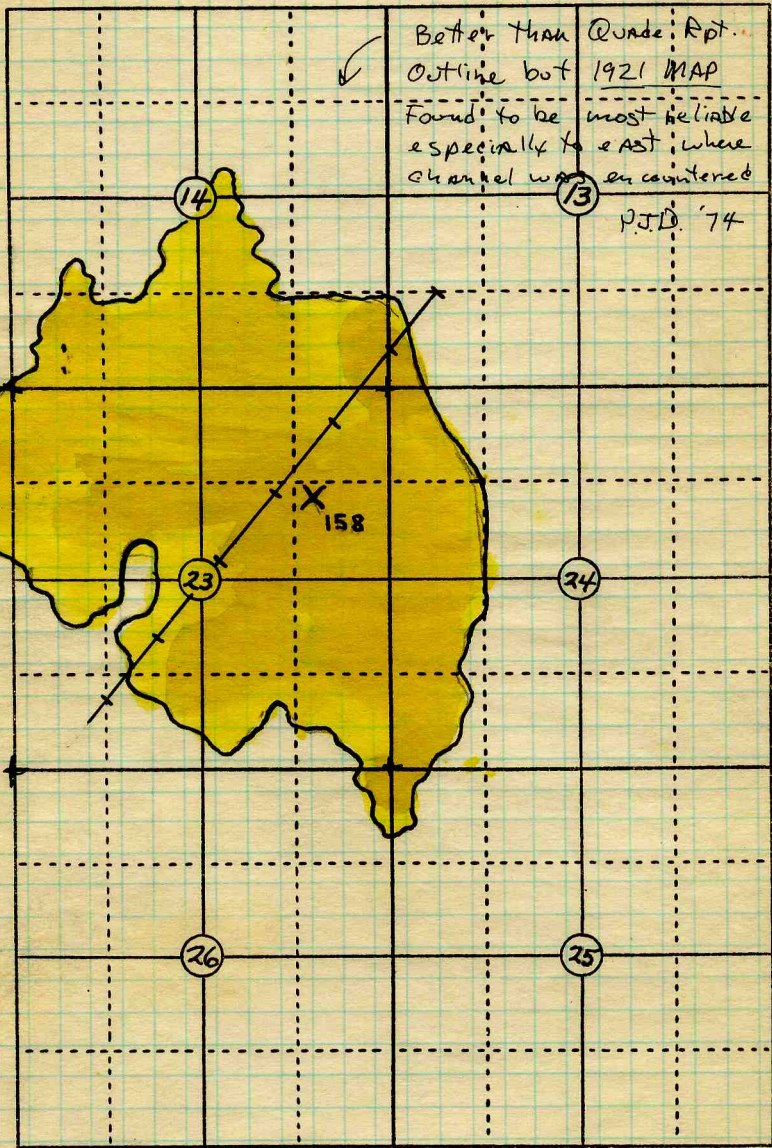
County Montgomery



Sec. 23

T. 8 N.
— S.
R. 4 E.
— W.

Index No.



T8N. R4W

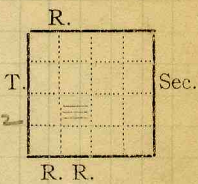
Map. Date 10-18-23 Operator Ind. & Ill. C. Corp. Name or No. 15.
 (Montgomery Coal Co.)
 County Montgomery Index No. 1723.2f



COAL MINING INVESTIGATIONS
COOPERATIVE AGREEMENT

Mine Name or No., Taylor Springs. 15
2 1/2 miles S from Hillsboro.

Operator, 1912
~~Montgomery Co. Coal Co. June 24/12~~
Operator, 1912 Peabody Coal Co.



Entrance, Shaft. Elev., ~~466.6~~ ft. { above,
Depth to bottom coal, 466.6 ft. Alt. below,

SURFACE DATA.

- A. Topography See
- B. Surficial materials, (1) Character See
- (2) Thickness, See
- (3) Effect on mining and shaft-sinking, of former drainage lines, underground water strata, etc. See

*Mine changed hands June 24 '12.
Not open since Apr. 1, 1912. Filled
with gas & has many bad falls.
Dangerous to examine until
in working order.*

- C. Outcrops, (1) Character, See
- (2) Structure, See
- (3) Fossil horizons See
- Collection No., See
- (4) Evidences of subsidence, See
- D. Note collection of mine maps, drill records and shaft logs. See

See drill record sheet.

- E. Notes on surrounding area, See
- Notify R. W. Campbell, Supt.
Taylor Springs # 15
Peabody Coal Co.*

Coal bed name: Local, Survey

Collector, State No. **1723**

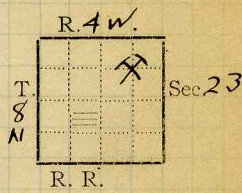
Mine, Taylor Springs. Co. Montgomery Co-op. No. 77

L.—SURFACE SHEET (Geol.) See



COAL MINING INVESTIGATIONS
COOPERATIVE AGREEMENT

Mine Name or No., **15**
2 1/2 miles S. from Hillsboro
Operator, 191



Operator, 191 **2 Peabody Coal Co.**
Entrance, **Shaft** Elev., **620** ^{U.S. Top.} ft. { above,
Depth to bottom coal, **466.6** ft. Alt. **Top #6+162.**

SURFACE DATA.

- A. Topography 622
466 See **1554**
- B. Surficial materials, (1) Character 7
- (2) Thickness, 1624
- (3) Effect on mining and shaft-sinking, of former drainage lines, underground water strata, etc.

Mine changed hands June 24 '12.
Not open since Apr. 1, 1912. Filled with gas & has many bad falls. Dangerous to examine until in working order.

- C. Outcrops, (1) Character, See
- (2) Structure, See
- (3) Fossil horizons See
- Collection No., See
- (4) Evidences of subsidence, See
- D. Note collection of mine maps, drill records and shaft logs.

See drill record sheet.

E. Notes on surrounding area,

Notify
R. W. Campbell, Supt.
Taylor Springs.
Peabody Coal Co. No. 15

See

Coal bed name: Local, Survey
Collector, *F. H. Kay* State No. **1723**
Mine, **Taylor Springs.** Montgomery 77
Co. Co. No.



COAL MINING INVESTIGATION

Cooperative Agreement

Operator, *Peabody Coal Co.* Date, *8-27* 1912
 Mine, *Taylor Springs* Located *2* miles *S.W.* from *Hillsboro*

Location in mine, *Entry face 2nd Stub W. off 2000' from shaft*
 Total (vertical) depth from surface at point of sampling *460*

In describing the beds and character of the members note any member that is rejected by the miner. Note all clay and sulphur partings, whatever their thickness Exclude from sample all clay and sulphur partings 3/8 inch thick or over (and even those of less thickness if they are rejected at mine or tippel).

Section of Bed at Point Sampled

No.	Description	Feet	Inches
1	Coal, Bright	1	1/4
X 2	Sulphur streak		
3	Coal, Bright streaked } with small sulphur.	4	5
4			
X 5	Blue Band		1/2
6	Coal, Dull	300	1
7			
8			
9	Output - 2500 T		
10	Roof - Rock Slate		
	Floor - Fire Clay		
	Total	6	7 3/4

Is coal wet or dry? *Dry*
 Time exposed, _____ hours *55* minutes.
 Weight, *52* gross, _____ net.
 What are the impurities, and how do they occur? *Sulphur*
 What are shipped? *1-3-4-5-7*
 What are excluded from sample? *2-6*
 Coal bed, *6*

#5516

Town, *Hillsboro* Mine, *Taylor Springs* Peabody Coal Co.
 Sample No. *77A* Can No. *ME.13* No. *77*
 I.--COAL SAMPLE SHEET. Sampler. *Mrs. Stafford* *1723*
Montgomery



COAL MINING INVESTIGATION

Cooperative Agreement

Operator *Pedernoy Coal Co.* Date, *8-27* *Hillsboro*

Mine, Located *2* miles from *S.W.*
 Location in mine, *2000' from Entry face 2nd Stub W. off Shaft*

Total (vertical) depth from surface at point of sampling *440*

In describing the beds and character of the members, note any member that is rejected by the miner. Note all clay and sulphur partings, whatever their thickness. Exclude from sample all clay and sulphur partings 3/8 inch thick or over (and even those of less thickness if they are rejected at mine or tippie).

Section of Bed at Point Sampled

No.	Description	Feet	Inches
X1	Coal, Bright		
2	Sulphur streak		1/4
3	Coal, Bright streaked with small Sulphur.	4	5
X4	Blue band		1/2
5	Coal, Dull	1	1
6			
7	Output - 2500 T		
8	Roof - Hard Slate		
9	Floor - Fire Clay	6	7 3/4
10		Total	

DRY

Is coal wet or dry? *55*
 Time exposed, *52* hours *minutes.*
 Weight, *1-3-9.5-7* gross *Subtotal*
 What are the impurities, and how do they occur. *26*
 What are shipped? *46*
 What are excluded from sample? *6*

Coal bed.

Town, *Hillsboro* Mine, *Taylor Springs*
77A *ME.13* *Pedernoy Coal Co.*
 Sample No. *77* Can No. *77* No. *172*
 I.--COAL SAMPLE SHEET. Sampler. *W.S. ...*